



# KILGORE COLLEGE

## 2014-2015

### BALANCED SCORECARD: 2014-2015

---

Research and Institutional Effectiveness Office  
1100 Broadway  
Kilgore, Texas 75662-3204  
Updated 3/6/2016

**KILGORE COLLEGE BALANCED SCORECARD  
2014 - 2015**

*Institution-Wide Assessment: Aligning College Activities and Practices to Its Mission*

Core Value Indicators: High Quality; Great Value; Easy Access; and Community Focus		SCORE TREND*	SCORE	CHANGE/DIFFERENCE	TARGET	ADDITIONAL EXPLANATION ABOUT TARGET/ASSESSMENT	LAST UPDATE
Tab #	1. High Quality:						
1.1	Number of AA/AAT/AS (Academic Transfer) Degrees Awarded		410	6.3%	386	>= to IPEDS Peer Group Average	2013-14
1.2	Number of AAS (Workforce Education) Degrees Awarded		345	17.9%	293	>= to IPEDS Peer Group Average	2013-14
1.3	Number of Certificates (Workforce Education, No CE) Awarded		396	-16.8%	476	>= to IPEDS Peer Group Average	2013-14
1.4	Number of Total Awards		1151	-0.3%	1154	>= to IPEDS Peer Group Average	2013-14
1.5	Number of Core Curriculum Completers		362	-14.0%	421	Annual increase	2013-14
1.6	FTIC-FT Graduation Rate: Associate Degrees (AA, AS, AAT, AAS)		14.7%	0.7%	13.9%	Annual cohort (Fall 2011) increase (IPEDS)	Spring 2015
1.7	FTIC-FT Graduation Rate: Certificates		4.8%	1.8%	3.0%	Annual cohort (Fall 2011) increase (IPEDS)	Spring 2015
1.8	FTIC-FT Graduation Rate: All Awards		19.5%	2.5%	16.9%	Annual cohort (Fall 2011) increase (IPEDS)	Spring 2015
1.9	Transfer Student GPA After One Year: UT-Tyler		71.9%	-7.0%	78.9%	>= to other transfers	Spring 2015
1.10	Transfer Student GPA After One Year: SFA		85.4%	11.8%	73.6%	>= to other transfers	Spring 2015
1.11	Percent Transferred		23.6%	-1.1%	24.7%	Compared with Medium B Peers, Accountability System	Spring 2015
1.12	Persistence (% of students who dropped at least one course)		26.4%	3.6%	30%	30% or less	Fall 2014
1.13	Persistence (% of students that withdrew from enrollment)		4.0%	1.0%	5%	5% or less	Fall 2014
1.14	Persistence (Fall to Spring FTIC Full-time)		78.9%	-1.1%	80%	80%	Spring 2015
1.15	Persistence (Fall to Fall FTIC Full-time)		52.3%	-7.7%	60%	60%	Fall 2015
1.16	Success (C or better) in subsequent, related coursework: Integrated Reading & Writing		61.2%	1.0%	60.2%	Annual Increase	Spring 2015
1.17	Success (C or better) in subsequent, related coursework: Math		58.6%	-7.0%	65.6%	Annual Increase	Spring 2015
1.18	Community Service		25.4%	-24.6%	50%	Graduating Student Survey	Spring 2015
1.19	Student Satisfaction of Instructional Program		98.4%	3.4%	95%	Graduating Student Survey	Spring 2015
1.20	Student Satisfaction (Students report having met educational objective at KC)		97.9%	2.9%	95%	Graduating Student Survey	Spring 2015
1.21	Success on certificate/licensure exam (total programs)		95.9%	5.9%	90%	Program Review Data	Spring 2015
1.22	Student Satisfaction With Support Services (satisfied with student services)		93.7%	-1.3%	95%	Student Satisfaction Survey Q#2 (Spring odd years)	Spring 2015
1.23	Student Life and Experiential Learning: Participation in campus-wide activities (including clubs, educational programs, service projects)		27.0%	-4.0%	31%	Graduating Student Survey (baseline=31%)	Spring 2015
1.24	Student Satisfaction: Computer Resources		98.8%	3.80%	95%	Graduating Student Survey	Spring 2015
1.25	Student Satisfaction: Library Databases/Print Resources		94.7%	-0.30%	95%	Graduating Student Survey	Spring 2015
1.26	Student satisfaction: Web Resources for Specific Courses		98.1%	3.10%	95%	Graduating Student Survey	Spring 2015
1.27	Workforce stability: turnover rate		9.70%	2.03%	7.67%	stable or declining turnover rate	Sum 2015
1.28	Workforce stability: average years of service		11.23	-0.60	11.83	increase in avg years of service	Sum 2015
1.29	Supportive and collegial work environment		96.0%	1.0%	95%	IE Survey, #1	Spring 2015
1.30	Acceptable level of employee morale		85.7%	-9.3%	95%	IE Survey, #10	Spring 2015
1.31	Opportunities for professional development		79.3%	-10.7%	90%	IE Survey, #5	Spring 2015
1.32	Meaningful involvement in decision making		89.8%	-0.2%	90%	IE Survey, #12	Spring 2015
1.33	Excellent (appropriate) compensation		\$52,605	\$792	\$51,813	faculty salaries above the mean salary of peers (IPEDS or THECB)	FY 2014
1.34	Documented evidence of improvement: % of units that met targets in AIP's		59.3%	-0.7%	60%	RIE Report Target=60%	Fall 2014
	2. Great Value:						

**KILGORE COLLEGE BALANCED SCORECARD**

2014 - 2015

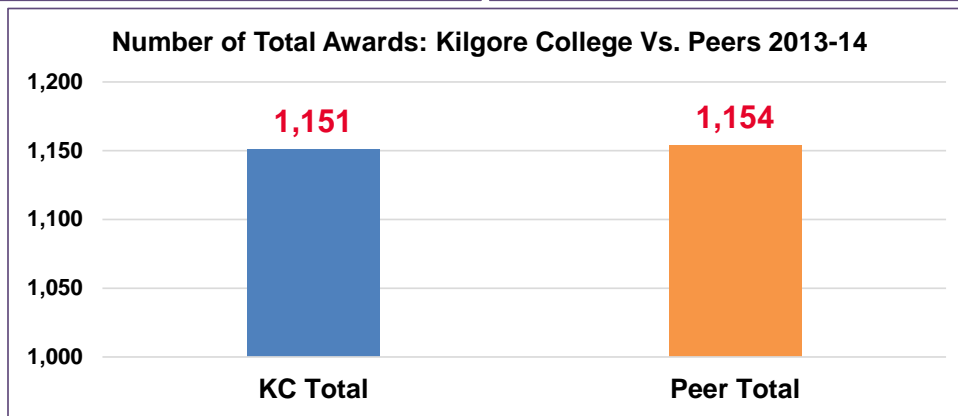
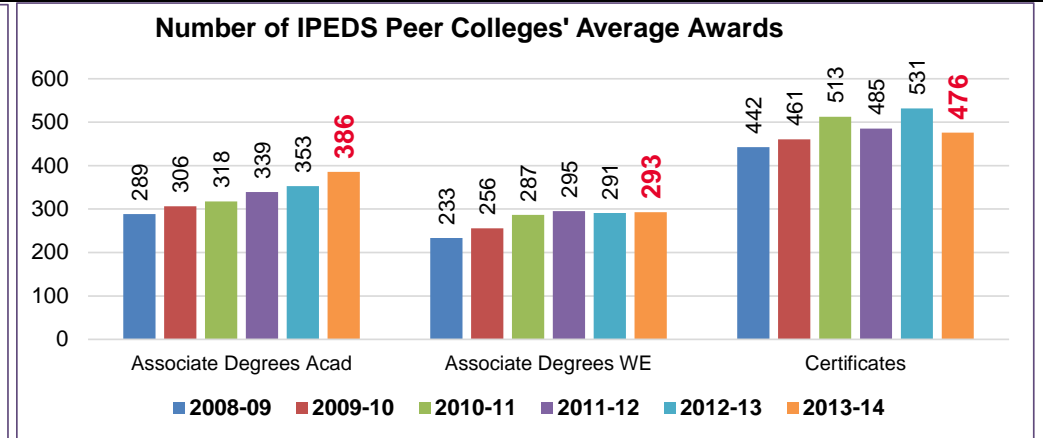
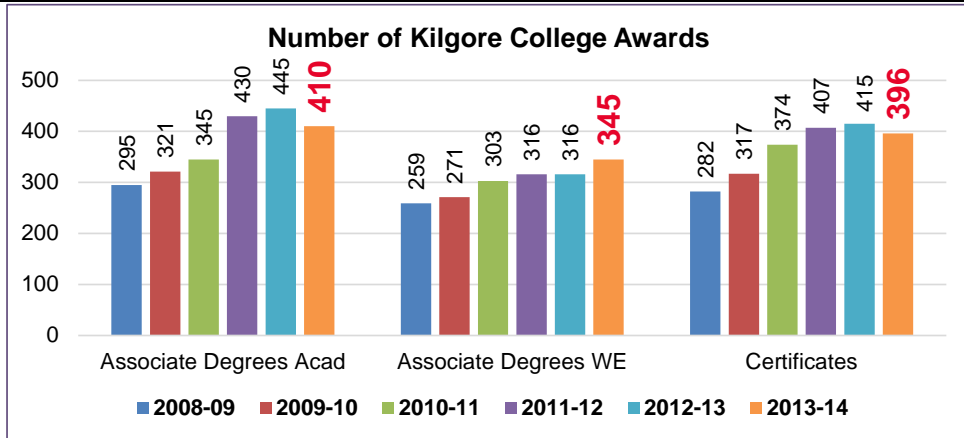
*Institution-Wide Assessment: Aligning College Activities and Practices to Its Mission*

Core Value Indicators: High Quality; Great Value; Easy Access; and Community Focus		SCORE TREND*	SCORE	CHANGE/DIFFERENCE	TARGET	ADDITIONAL EXPLANATION ABOUT TARGET/ASSESSMENT	LAST UPDATE
2.1	Total tax rate		\$0.154	-1.0%	\$0.164	Below state average	Spring 2015
2.2	In-district tuition		3rd Lowest			Top 10 Lowest in state per SCH	Spring 2015
2.3	Out-of-district tuition and fees		\$127	-\$2	\$129	Below average of regional peers (Panola, TJC, NTCC)	Spring 2015
<b>3. Easy Access:</b>							
3.1	Percent of Students Who Early Registered (for fall semester)		83.9%	3.9%	80%	student record analysis	Fall 2014
3.2	Success in developmental course work: English		55.4%	0.4%	55%	55% success	Fall 2014
3.3	Success in developmental course work: Math		54.8%	-0.2%	55%	55% success	Fall 2014
3.4	Success in developmental course work: Reading		59.1%	4.1%	55%	55% success	Fall 2014
3.5	FTIC Students receiving financial aid (includes scholarships and loans)		75%	4.6%	70%	At or above last year	Spring 2015
3.6	Gifts From Donors		\$825,261	-17.5%	\$1,000,000	\$1,000,000 target	Sum 2015
3.7	Student Population Mirrors Service Area (comparison of minority % gap)		1.9%	3.1%	-1.2%	At or above minority % gap of medium CC's from Accountability Sys	FY2014
<b>4. Community Focus:</b>							
4.1	Enrollment in Continuing Ed. Courses		5,387	-28.6%	7,542	Annual increase	4th Quarter 2015
4.2	Percent of students enrolled in workforce education programs		48%	-2.4%	50%	50% in Workforce Education Majors	Fall 2014
4.3	Employment Placement Success of Workforce Ed Completers: Certificate/AAS		88.6%	-1.4%	90%	Accountability System	Spring 2015
4.4	Number of Long Term Clients of KC Small Business Development Center		158	27.4%	124	Annual increase	10/1/2015
4.5	KC Small Business Development Center Capital Infusion		\$27,828,274	351%	\$6,177,137	Meet annual N. TX SBDC & U.S. SBA goal	10/1/2015
4.6	Number of people trained		5,500	0.0%	5,500	Annual increase (baseline=5,500)	Sum 2015
4.7	Percentage of instructors offering a service learning component in their coursework		25%	5.0%	20%	20% of instructors Fall & Spring	Spring 2015
<b>Number of Scores At or Above Targets</b>		<b>28</b>					
<b>Percent of Scores At or Above Targets</b>		<b>54.9%</b>					
<b>Number of Scores Improved or Unchanged Since Last Year(Up Arrows)</b>		<b>21</b>					
<b>Percent of Scores Improved or Unchanged Since Last Year(Up Arrows)</b>		<b>41.2%</b>					

\*Trend arrow descriptions: Green (light) arrows=At or above target; Red (dark) arrows=below target. Arrow directions:

- Score is higher than target and higher than last year's Scorecard score.
- Score is lower than target and lower than last year's Scorecard score.
- Score is higher than target and the same as last year's Scorecard score.
- Score is lower than target and the same as last year's Scorecard score.
- Score is higher than target but lower than last year's Scorecard score.
- Score is lower than target but higher than last year's Scorecard score.

	Kilgore College Graduates							Peer Colleges' Graduates' Average				
	Associate Degrees Acad		Associate Degrees WE		Certificates		KC Total		Associate Degrees Acad	Associate Degrees WE	Certificates	Peer Total
	Count	% Difference With Peer Group	Count	% Difference With Peer Group	Count	% Difference With Peer Group	Count	% Difference With Peer Group	Count	Count	Count	Count
2008-09	295	2.1%	259	9.9%	282	-56.9%	836	-15.4%	289	233	442	964
2009-10	321	4.6%	271	5.6%	317	-45.3%	909	-12.5%	306	256	461	1023
2010-11	345	8.0%	303	5.4%	374	-37.1%	1022	-9.3%	318	287	513	1117
2011-12	430	21.1%	316	6.6%	407	-19.2%	1153	2.9%	339	295	485	1120
2012-13	445	20.7%	316	7.9%	415	-28.1%	1176	0.0%	353	291	531	1176
<b>2013-14</b>	<b>410</b>	<b>6.0%</b>	<b>345</b>	<b>15.2%</b>	<b>396</b>	<b>-20.2%</b>	<b>1151</b>	<b>-0.3%</b>	<b>386</b>	<b>293</b>	<b>476</b>	<b>1154</b>



Success Target: At or above peer comparison group average (Angelina, Lee, Midland, South Plains, Temple, TVCC, TJC)

Source: THECB PREP Degrees Awarded By Level totals, excluding Continuing Education certificates, using IPEDS Data Feedback Report Peer Group.

**1.5, 1.6, 1.7, 1.8 Number of Awards**  
**Degrees and Certificates Awarded 2004-2013**

	2004-05		2005-06		2005 to 2006	2006-07		2006 to 2007	2007-08		2007 to 2008	2008-09		2008 to 2009	2009-10		2009 to 2010	2010-11		2010 to 2011	2011-12		2011 to 2012	2012-13		2012 to 2013	2013-14		2013 to 2014
	Total	%	Total	%	Inc/Dec	Total	%	Inc/Dec	Total	%	Inc/Dec	Total	%	Inc/Dec	Total	%	Inc/Dec	Total	%	Inc/Dec	Total	%	Inc/Dec	Total	%	Inc/Dec	Total	%	Inc/Dec
Associate of Arts	240	15.7%	231	18.5%	-3.8%	225	16.6%	-2.6%	210	14.5%	-6.7%	215	14.0%	2.4%	241	14.1%	12.1%	244	13.5%	1.2%	294	15.1%	20.5%	316	16.1%	7.5%	290	15.4%	-8.2%
Associate of Arts in Teaching	6	0.4%	8	0.6%	33.3%	17	1.3%	112.5%	13	0.9%	-23.5%	17	1.1%	30.8%	10	0.6%	-41.2%	17	0.9%	70.0%	15	0.8%	-11.8%	16	0.8%	6.7%	10	0.5%	-37.5%
Associate of Science	46	3.0%	49	3.9%	6.5%	49	3.6%	0.0%	49	3.4%	0.0%	63	4.1%	28.6%	70	4.1%	11.1%	84	4.6%	20.0%	121	6.2%	44.0%	113	5.8%	-6.6%	110	5.8%	-2.7%
<b>Total AA/AAT/AS</b>	<b>292</b>	<b>19.1%</b>	<b>288</b>	<b>23.0%</b>	<b>-1.4%</b>	<b>291</b>	<b>21.5%</b>	<b>1.0%</b>	<b>272</b>	<b>18.8%</b>	<b>-6.5%</b>	<b>295</b>	<b>19.2%</b>	<b>8.5%</b>	<b>321</b>	<b>18.8%</b>	<b>8.8%</b>	<b>345</b>	<b>19.1%</b>	<b>7.5%</b>	<b>430</b>	<b>22.1%</b>	<b>24.6%</b>	<b>445</b>	<b>22.7%</b>	<b>3.5%</b>	<b>410</b>	<b>21.8%</b>	<b>-7.9%</b>
Associate of Applied Science	191	12.5%	174	13.9%	-8.9%	209	15.5%	20.1%	244	16.8%	16.7%	259	16.9%	6.1%	271	15.9%	4.6%	303	16.7%	11.8%	316	16.2%	4.3%	316	16.1%	0.0%	345	18.3%	9.2%
Certificate of Completion	642	42.0%	435	34.8%	-32.2%	537	39.7%	23.4%	597	41.2%	11.2%	623	40.6%	4.4%	699	41.0%	12.2%	758	41.9%	8.4%	727	37.4%	-4.1%	706	36.0%	-2.9%	694	36.9%	-1.7%
<b>Total AAS/Certificates</b>	<b>833</b>	<b>54.5%</b>	<b>609</b>	<b>48.7%</b>	<b>-26.9%</b>	<b>746</b>	<b>55.2%</b>	<b>22.5%</b>	<b>841</b>	<b>58.0%</b>	<b>12.7%</b>	<b>882</b>	<b>57.5%</b>	<b>4.9%</b>	<b>970</b>	<b>56.9%</b>	<b>10.0%</b>	<b>1,061</b>	<b>58.6%</b>	<b>9.4%</b>	<b>1,043</b>	<b>53.6%</b>	<b>-1.7%</b>	<b>1,022</b>	<b>52.1%</b>	<b>-2.0%</b>	<b>1,039</b>	<b>55.2%</b>	<b>1.7%</b>
<b>1.5. Core Curriculum Completer</b>	<b>390</b>	<b>25.5%</b>	<b>340</b>	<b>27.2%</b>	<b>-12.8%</b>	<b>298</b>	<b>22.0%</b>	<b>-12.4%</b>	<b>289</b>	<b>19.9%</b>	<b>-3.0%</b>	<b>322</b>	<b>21.0%</b>	<b>11.4%</b>	<b>353</b>	<b>20.7%</b>	<b>9.6%</b>	<b>360</b>	<b>19.9%</b>	<b>2.0%</b>	<b>405</b>	<b>20.8%</b>	<b>12.5%</b>	<b>421</b>	<b>21.5%</b>	<b>4.0%</b>	<b>362</b>	<b>19.2%</b>	<b>-14.0%</b>
Field of Study Completer	13	0.9%	14	1.1%	7.7%	17	1.3%	21.4%	47	3.2%	176.5%	34	2.2%	-27.7%	60	3.5%	76.5%	45	2.5%	-25.0%	67	3.4%	48.9%	74	3.8%	10.4%	72	3.8%	-2.7%
<b>Total Associate Degrees/Certs</b>	<b>1,125</b>	<b>73.6%</b>	<b>897</b>	<b>71.7%</b>	<b>-20.3%</b>	<b>1,037</b>	<b>76.7%</b>	<b>15.6%</b>	<b>1,113</b>	<b>76.8%</b>	<b>7.3%</b>	<b>1,177</b>	<b>76.8%</b>	<b>5.8%</b>	<b>1,291</b>	<b>75.8%</b>	<b>9.7%</b>	<b>1,406</b>	<b>77.6%</b>	<b>8.9%</b>	<b>1,473</b>	<b>75.7%</b>	<b>4.8%</b>	<b>1,467</b>	<b>74.8%</b>	<b>-0.4%</b>	<b>1,449</b>	<b>77.0%</b>	<b>-1.2%</b>
<b>Grand Total Awards</b>	<b>1,528</b>	<b>100.0%</b>	<b>1,251</b>	<b>100.0%</b>	<b>-18.1%</b>	<b>1,352</b>	<b>100.0%</b>	<b>8.1%</b>	<b>1,449</b>	<b>100.0%</b>	<b>7.2%</b>	<b>1,533</b>	<b>100.0%</b>	<b>5.8%</b>	<b>1,704</b>	<b>100.0%</b>	<b>11.2%</b>	<b>1,811</b>	<b>100.0%</b>	<b>6.3%</b>	<b>1,945</b>	<b>100.0%</b>	<b>7.4%</b>	<b>1,962</b>	<b>100.0%</b>	<b>0.9%</b>	<b>1,883</b>	<b>100.0%</b>	<b>-4.0%</b>

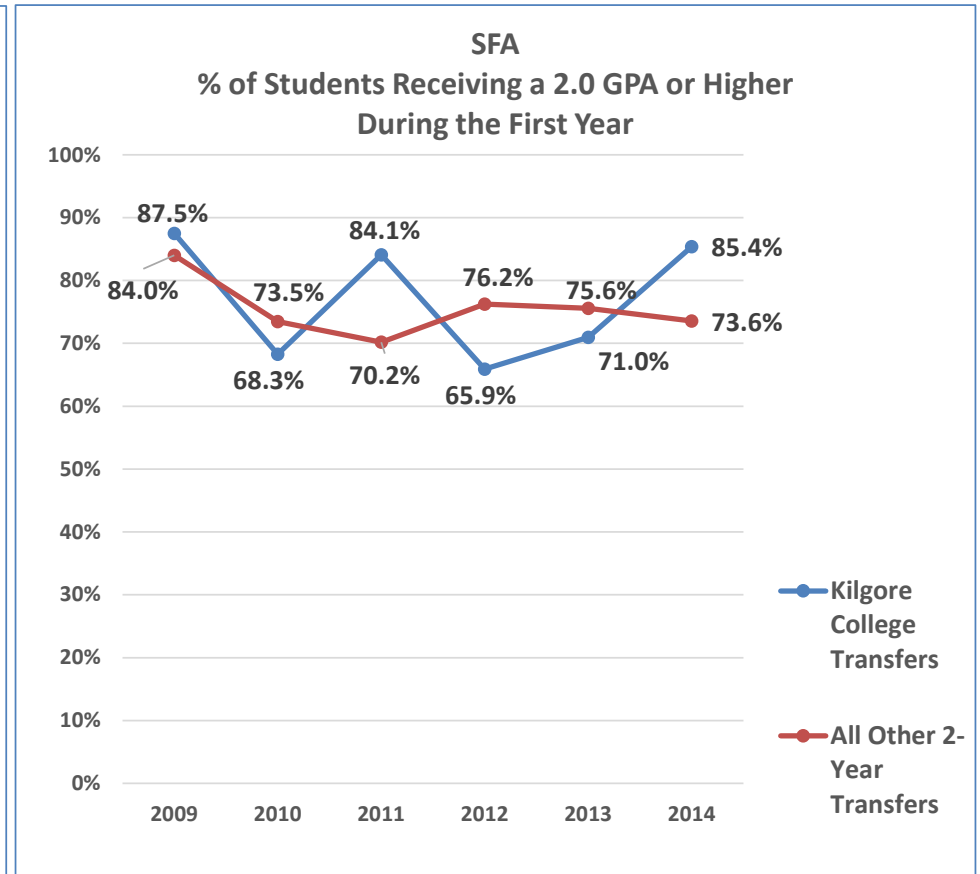
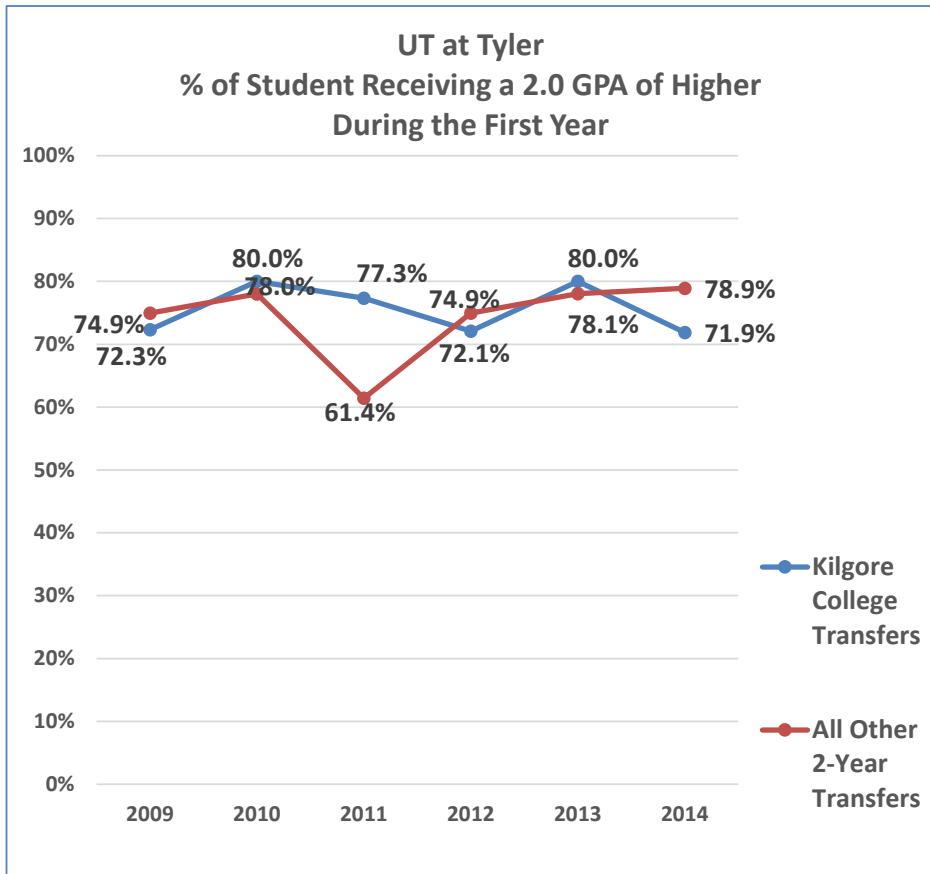
\*Degrees Awarded is a count of all degrees, certificates, core and field of study completer awards. A student may receive multiple awards during the year. Source: CBM009

**KC IPEDS Graduation Rate Survey (GRS) Report**

IPEDS Reporting Year	2005	2006	2007	2008	2009	2010	2011	2012	2013	2014	2015	
Fall Cohort Year	2001	2002	2003	2004	2005	2006	2007	2008	2009	2010	2011	
Number in Beginning Cohort	#	737	808	787	697	856	753	949	888	1062	1027	961
<2 Year Completers	#	51	38	15	33	37	28	29	37	43	31	46
<b>1.7 %&lt;2 Year Completers</b>	%	<b>6.9%</b>	<b>4.7%</b>	<b>1.9%</b>	<b>4.7%</b>	<b>4.3%</b>	<b>3.72%</b>	<b>3.06%</b>	<b>4.17%</b>	<b>4.05%</b>	<b>3.02%</b>	<b>4.79%</b>
2-4-Year Completers	#	86	104	92	63	84	94	107	102	125	143	141
<b>1.6 % 2-4 Year Completers</b>	%	<b>11.7%</b>	<b>12.9%</b>	<b>11.7%</b>	<b>9.0%</b>	<b>9.8%</b>	<b>12.5%</b>	<b>11.3%</b>	<b>11.5%</b>	<b>11.8%</b>	<b>13.9%</b>	<b>14.7%</b>
Total Completers Within 150%	#	137	142	107	96	121	122	136	139	168	174	187
<b>1.8 Graduation Rate</b>	%	<b>18.6%</b>	<b>17.6%</b>	<b>13.6%</b>	<b>13.8%</b>	<b>14.1%</b>	<b>16.2%</b>	<b>14.3%</b>	<b>15.7%</b>	<b>15.8%</b>	<b>16.9%</b>	<b>19.5%</b>

Full-time, First-time degree/certificate-seeking students reported from the fall cohort, who completed their program within 150% of normal time (Degree: 3 years, Certificate: 2 years) as of the end of three years. Source: KC Data as reported on IPEDS GRS (US Dept of Ed)

**1.9., 1.10 Success of KC Transfers To Top Two Transfer Institutions - Fall Semesters**  
**% of Students Receiving a 2.0 GPA or Higher During the First Year**



### GPA and Retention of KC Transfers By Top Transfer Universities - Fall Semesters

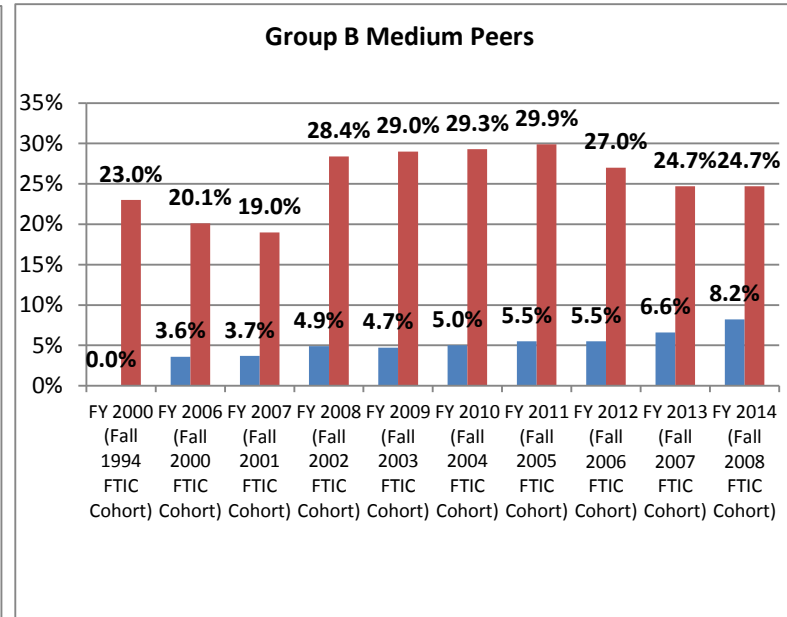
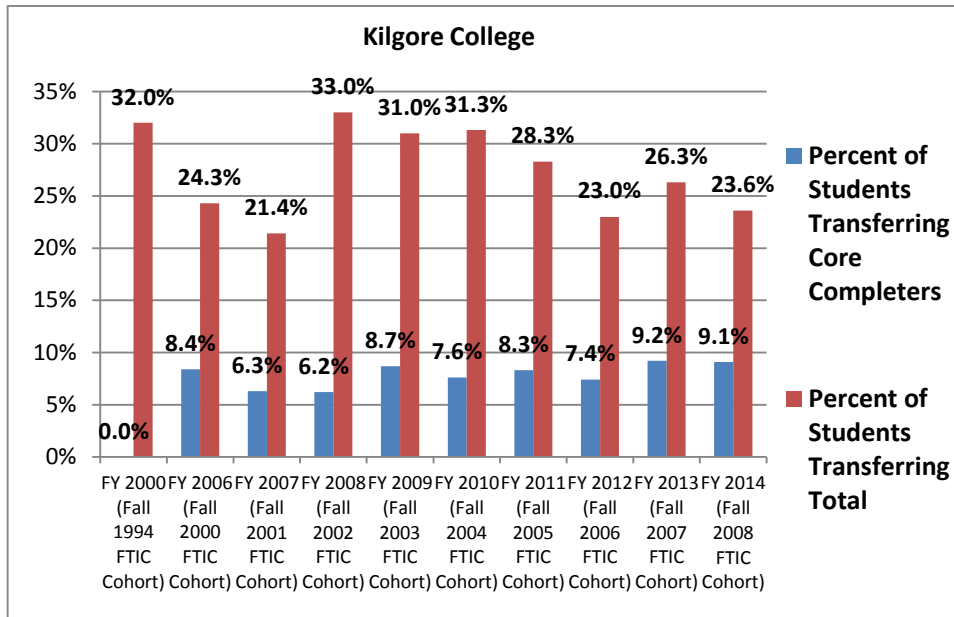
University and Year	Comparison Category	<2.0 GPA		≥2.0 GPA		Unknown GPA		Total Transfers (Earned ≥30 SCH at KC)		Enrolled Next Fall At Same University	
		#	%	#	%	#	%	#	%	#	%
UTT 2014	Kilgore College Transfers	25	26.0%	69	71.9%	2	2.1%	96	100%	67	69.8%
	All Other 2-Year Transfers	105	19.1%	434	78.9%	11	2.0%	550	100%	411	74.7%
	<b>Total Transfers Fall 2014</b>	<b>130</b>	<b>20.1%</b>	<b>503</b>	<b>77.9%</b>	<b>13</b>	<b>2.0%</b>	<b>646</b>	<b>100%</b>	<b>478</b>	<b>74.0%</b>
SFA 2014	Kilgore College Transfers	6	14.6%	35	85.4%	0	0.0%	41	100%	35	85.4%
	All Other 2-Year Transfers	150	25.3%	437	73.6%	7	1.2%	594	100%	437	73.6%
	<b>Total Transfers Fall 2013</b>	<b>156</b>	<b>24.6%</b>	<b>472</b>	<b>74.3%</b>	<b>7</b>	<b>1.1%</b>	<b>635</b>	<b>100%</b>	<b>472</b>	<b>74.3%</b>
UTT 2013	Kilgore College Transfers	20	19.0%	84	80.0%	1	1.0%	105	100%	76	72.4%
	All Other 2-Year Transfers	114	20.5%	434	78.1%	8	1.4%	556	100%	395	71.0%
	<b>Total Transfers Fall 2013</b>	<b>134</b>	<b>20.3%</b>	<b>518</b>	<b>78.4%</b>	<b>9</b>	<b>1.4%</b>	<b>661</b>	<b>100%</b>	<b>471</b>	<b>71.3%</b>
SFA 2013	Kilgore College Transfers	16	25.8%	44	71.0%	2	3.2%	62	100%	39	62.9%
	All Other 2-Year Transfers	126	23.0%	415	75.6%	8	1.5%	549	100%	416	75.8%
	<b>Total Transfers Fall 2013</b>	<b>142</b>	<b>23.2%</b>	<b>459</b>	<b>75.1%</b>	<b>10</b>	<b>1.6%</b>	<b>611</b>	<b>100%</b>	<b>455</b>	<b>74.5%</b>
UTT 2012	Kilgore College Transfers	22	25.6%	62	72.1%	2	2.3%	86	100%	58	67.4%
	All Other 2-Year Transfers	107	22.3%	359	74.9%	13	2.7%	479	100%	343	71.6%
	<b>Total Transfers Fall 2012</b>	<b>129</b>	<b>22.8%</b>	<b>421</b>	<b>74.5%</b>	<b>15</b>	<b>2.7%</b>	<b>565</b>	<b>100%</b>	<b>401</b>	<b>71.0%</b>
SFA 2012	Kilgore College Transfers	15	34.1%	29	65.9%	0	0.0%	44	100%	29	65.9%
	All Other 2-Year Transfers	141	22.5%	478	76.2%	8	1.3%	627	100%	471	75.1%
	<b>Total Transfers Fall 2012</b>	<b>156</b>	<b>23.2%</b>	<b>507</b>	<b>75.6%</b>	<b>8</b>	<b>1.2%</b>	<b>671</b>	<b>100%</b>	<b>500</b>	<b>74.5%</b>
UTT 2011	Kilgore College Transfers	22	22.7%	75	77.3%	0	0.0%	97	100%	67	69.1%
	All Other 2-Year Transfers	180	36.4%	304	61.4%	11	2.2%	495	100%	346	69.9%
	<b>Total Transfers Fall 2011</b>	<b>202</b>	<b>34.1%</b>	<b>379</b>	<b>64.0%</b>	<b>11</b>	<b>1.9%</b>	<b>592</b>	<b>100%</b>	<b>413</b>	<b>69.8%</b>
SFA 2011	Kilgore College Transfers	7	15.9%	37	84.1%	0	0.0%	44	100%	37	84.1%
	All Other 2-Year Transfers	156	28.4%	386	70.2%	8	1.5%	550	100%	382	69.5%
	<b>Total Transfers Fall 2011</b>	<b>163</b>	<b>27.4%</b>	<b>423</b>	<b>71.2%</b>	<b>8</b>	<b>1.3%</b>	<b>594</b>	<b>100%</b>	<b>419</b>	<b>70.5%</b>
UTT 2010	Kilgore College Transfers	17	20.0%	68	80.0%	0	0.0%	85	100%	59	69.4%
	All Other 2-Year Transfers	98	20.2%	379	78.0%	9	1.9%	486	100%	349	71.8%
	<b>Total Transfers Fall 2010</b>	<b>115</b>	<b>20.1%</b>	<b>447</b>	<b>78.3%</b>	<b>9</b>	<b>1.6%</b>	<b>571</b>	<b>100%</b>	<b>408</b>	<b>71.5%</b>
SFA 2010	Kilgore College Transfers	12	29.3%	28	68.3%	1	2.4%	41	100%	29	70.7%
	All Other 2-Year Transfers	146	24.7%	435	73.5%	11	1.9%	592	100%	433	73.1%
	<b>Total Transfers Fall 2010</b>	<b>158</b>	<b>25.0%</b>	<b>463</b>	<b>73.1%</b>	<b>12</b>	<b>1.9%</b>	<b>633</b>	<b>100%</b>	<b>462</b>	<b>73.0%</b>
UTT 2009	Kilgore College Transfers	17	26.2%	47	72.3%	1	1.5%	65	100%	45	69.2%
	All Other 2-Year Transfers	93	23.1%	302	74.9%	8	2.0%	403	100%	301	74.7%
	<b>Total Transfers Fall 2009</b>	<b>110</b>	<b>23.5%</b>	<b>349</b>	<b>74.6%</b>	<b>9</b>	<b>1.9%</b>	<b>468</b>	<b>100%</b>	<b>346</b>	<b>73.9%</b>
SFA 2009	Kilgore College Transfers	6	9.4%	56	87.5%	2	3.1%	64	100%	53	82.8%
	All Other 2-Year Transfers	65	11.5%	473	84.0%	25	4.4%	563	100%	392	69.6%
	<b>Total Transfers Fall 2009</b>	<b>71</b>	<b>11.3%</b>	<b>529</b>	<b>84.4%</b>	<b>27</b>	<b>4.3%</b>	<b>627</b>	<b>100%</b>	<b>445</b>	<b>71.0%</b>

Measure: KC transfers' GPA will be higher than other 2-year institutions.

Source: THECB Transfer reports using CBM001, CBM002, CBM009

### 1.11 Percent of Students Transferred

	Kilgore College				Group B Medium Peers			
	Percent of Students Transferring		Annual Point Change		Percent of Students Transferring		Annual Point Change	
	Core Completers	Total	Core Completers	Total	Core Completers	Total	Core Completers	Total
<b>FY 2000 (Fall 1994 FTIC Cohort)</b>	0.0%	32.0%	NA	NA	0.0%	23.0%	NA	NA
<b>FY 2006 (Fall 2000 FTIC Cohort)</b>	8.4%	24.3%	8.4%	-7.7%	3.6%	20.1%	3.6%	-2.9%
<b>FY 2007 (Fall 2001 FTIC Cohort)</b>	6.3%	21.4%	-2.1%	-2.9%	3.7%	19.0%	0.1%	-1.1%
<b>FY 2008 (Fall 2002 FTIC Cohort)</b>	6.2%	33.0%	-0.1%	11.6%	4.9%	28.4%	1.2%	9.4%
<b>FY 2009 (Fall 2003 FTIC Cohort)</b>	8.7%	31.0%	2.5%	-2.0%	4.7%	29.0%	-0.2%	0.6%
<b>FY 2010 (Fall 2004 FTIC Cohort)</b>	7.6%	31.3%	-1.1%	0.3%	5.0%	29.3%	0.3%	0.3%
<b>FY 2011 (Fall 2005 FTIC Cohort)</b>	8.3%	28.3%	0.7%	-3.0%	5.5%	29.9%	0.5%	0.6%
<b>FY 2012 (Fall 2006 FTIC Cohort)</b>	7.4%	23.0%	-0.9%	-5.3%	5.5%	27.0%	0.0%	-2.9%
<b>FY 2013 (Fall 2007 FTIC Cohort)</b>	9.2%	26.3%	1.8%	3.3%	6.6%	24.7%	1.1%	-2.3%
<b>FY 2014 (Fall 2008 FTIC Cohort)</b>	<b>9.1%</b>	<b>23.6%</b>	-0.1%	-2.7%	<b>8.2%</b>	<b>24.7%</b>	1.6%	0.0%



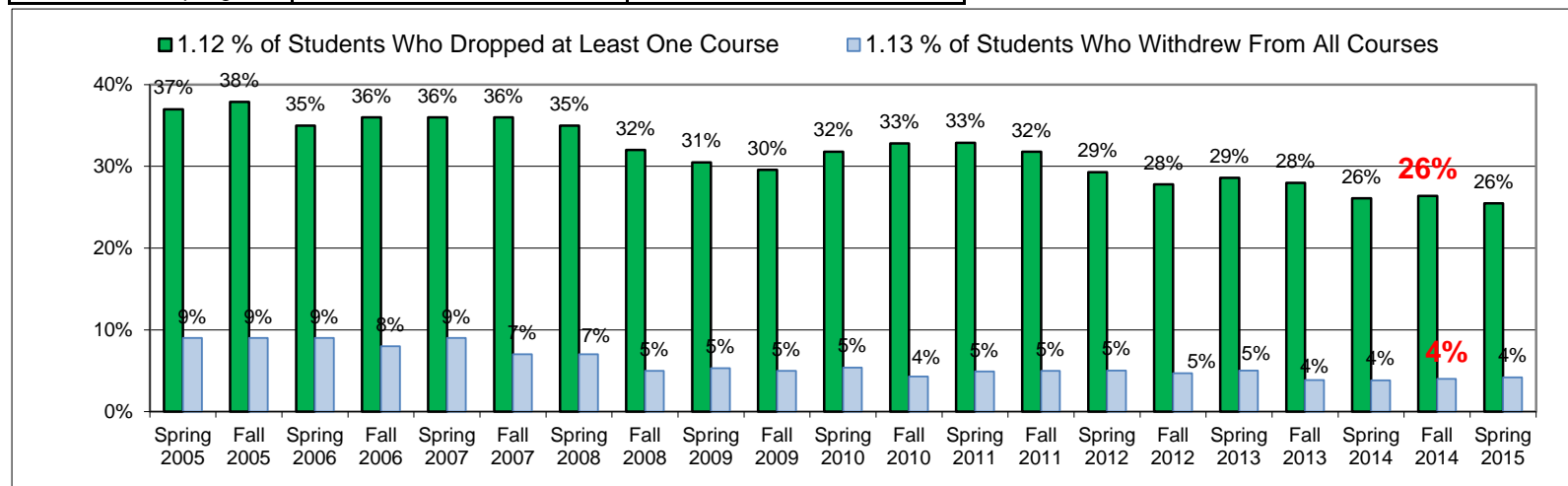
Success Target: At or above peers

Source: #13, Texas Accountability System. FTIC (dual credit become FTIC the first semester after they graduate) at KC students are tracked for 6 years until they enroll at a TX 4-year institution



### 1.12, 1.13. Persistence: Drops and Withdrawals

	1.12 % of Students Who Dropped at Least One Course	1.13 % of Students Who Withdrew From All Courses
Fall 2004	37.0%	8.0%
Spring 2005	37.0%	9.0%
Fall 2005	37.9%	9.0%
Spring 2006	35.0%	9.0%
Fall 2006	36.0%	8.0%
Spring 2007	36.0%	9.0%
Fall 2007	36.0%	7.0%
Spring 2008	35.0%	7.0%
Fall 2008	32.0%	5.0%
Spring 2009	30.5%	5.3%
Fall 2009	29.6%	5.0%
Spring 2010	31.8%	5.4%
Fall 2010	32.8%	4.3%
Spring 2011	32.9%	4.9%
Fall 2011	31.8%	5.0%
Spring 2012	29.3%	5.0%
Fall 2012	27.8%	4.7%
Spring 2013	28.6%	5.0%
Fall 2013	28.0%	3.9%
Spring 2014	26.1%	3.8%
Fall 2014	26.4%	4.0%
Spring 2015	25.5%	4.2%

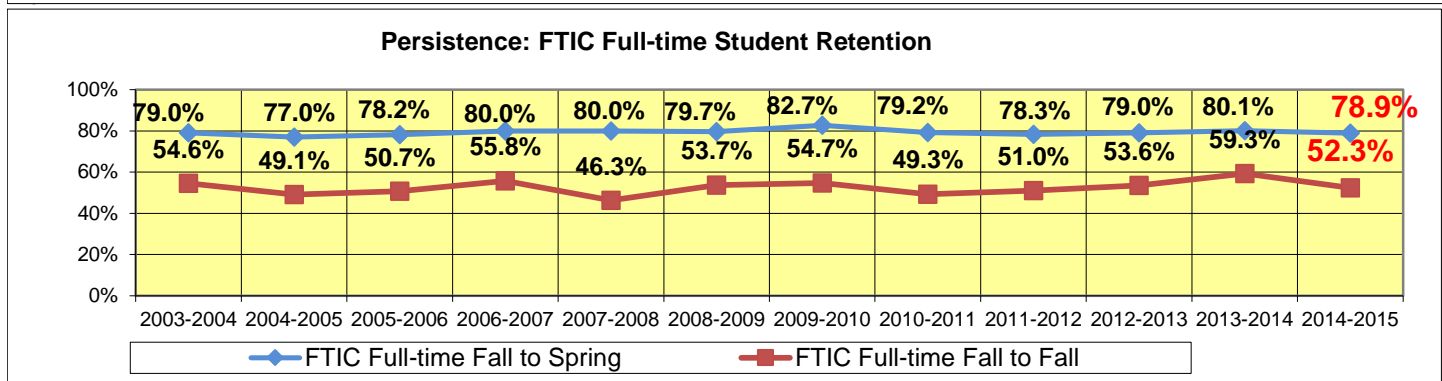
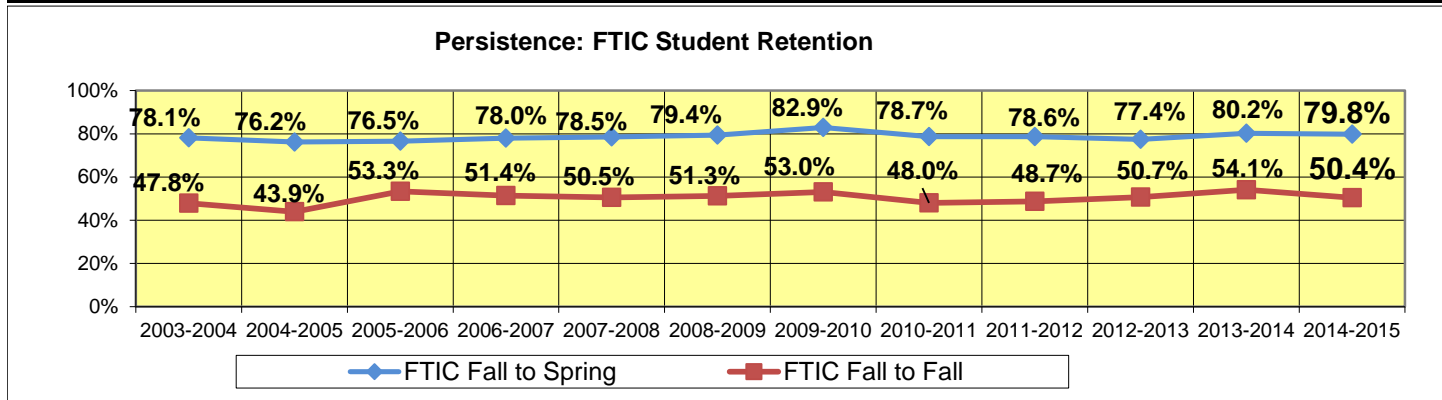


Success Outcome: (a) % of students who were dropped at least one course ≤ 30%; (b) total withdrawal ≤ 7%

Source: CBM00S starting Fall 2012; POISE Withdrawal batch file

### 1.14, 1.15 Persistence: First Time In College Student Retention

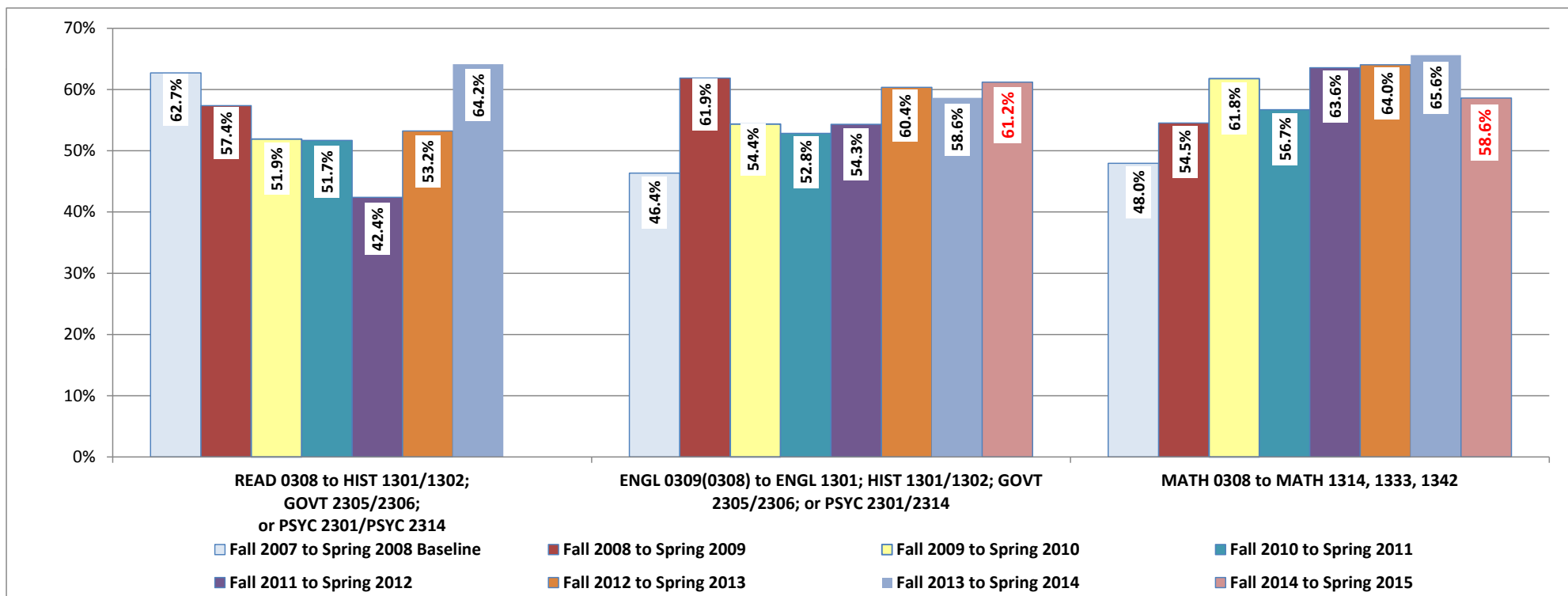
	FTIC Fall to Spring	FTIC Fall to Fall	FTIC Full-time Fall to Spring	FTIC Full-time Fall to Fall
2003-2004	78.1%	47.8%	79.0%	54.6%
2004-2005	76.2%	43.9%	77.0%	49.1%
2005-2006	76.5%	53.3%	78.2%	50.7%
2006-2007	78.0%	51.4%	80.0%	55.8%
2007-2008	78.5%	50.5%	80.0%	46.3%
2008-2009	79.4%	51.3%	79.7%	53.7%
2009-2010	82.9%	53.0%	82.7%	54.7%
2010-2011	78.7%	48.0%	79.2%	49.3%
2011-2012	78.6%	48.7%	78.3%	51.0%
2012-2013	77.4%	50.7%	79.0%	53.6%
2013-2014	80.2%	54.1%	80.1%	59.3%
2014-2015	<b>79.8%</b>	<b>50.4%</b>	<b>78.9%</b>	<b>52.3%</b>
Averages	78.7%	50.3%	79.3%	52.5%



Success Outcomes: (1) Fall to Spring= 80%; (2) Fall to Fall=60%. Source: CBM001 Reports

### 1.16, 1.17 Success (A,B,C) in Subsequent Courses

Initial Course	Subsequent Course	Fall 2007 to Spring 2008			Fall 2008 to Spring 2009			Fall 2009 to Spring 2010			Fall 2010 to Spring 2011			Fall 2011 to Spring 2012			Fall 2012 to Spring 2013			Fall 2013 to Spring 2014			Annual % Points Change			
		Total	# of Success	% Success	Total	# of Success	% Success	Total	# of Success	% Success	Total	# of Success	% Success	Total	# of Success	% Success	Total	# of Success	% Success	Total	# of Success	% Success				
READ 0308	HIST1301,1302; GOVT 2305,2306; PSYC2301,2314	59	37	62.7%	61	35	57.4%	104	54	51.9%	89	46	51.7%	92	39	42.4%	62	33	53.2%	53	34	64.2%	60.2%	1.0%		
1.16 ENGL 0309 (formerly 0308)	ENGL 1301; HIST1301,1302; GOVT 2305,2306; PSYC2301,2314	110	51	46.4%	118	73	61.9%	149	81	54.4%	159	84	52.8%	173	94	54.3%	159	96	60.4%	133	78	58.6%	67		41	61.2%
1.17 MATH 0308	MATH 1314, 1333, 1342	123	59	48.0%	110	60	54.5%	123	76	61.8%	97	55	56.7%	129	82	63.6%	114	73	64.0%	96	63	65.6%	87	51	58.6%	-7.0%
Average All Areas		292	147	50.3%	289	168	58.1%	376	211	56.1%	345	185	53.6%	394	215	54.6%	335	202	60.3%	282	175	62.1%	154	92	59.7%	-2.3%

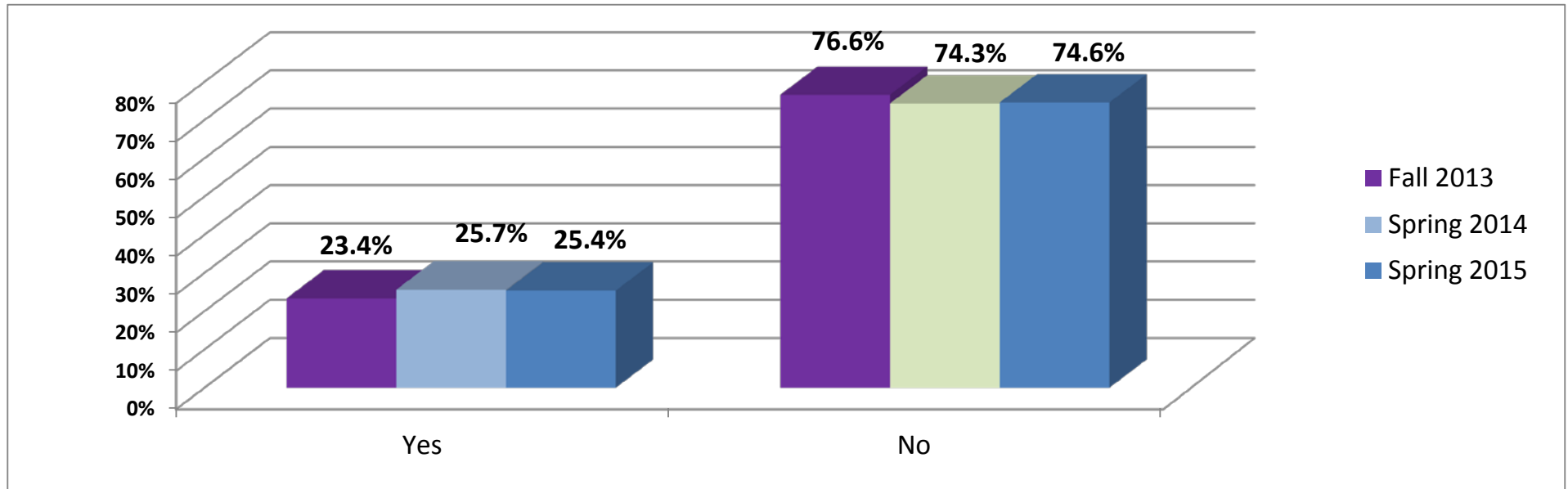


\*Reading combined with English in 2014-2015. Source: Student Grades

### 1.18 Community Service

While enrolled at Kilgore College, did you participate in any of the following community service activities: U.S. Military Services, service learning, voted in an election, active member of a community organization, volunteer fire department, or jury duty, etc.?

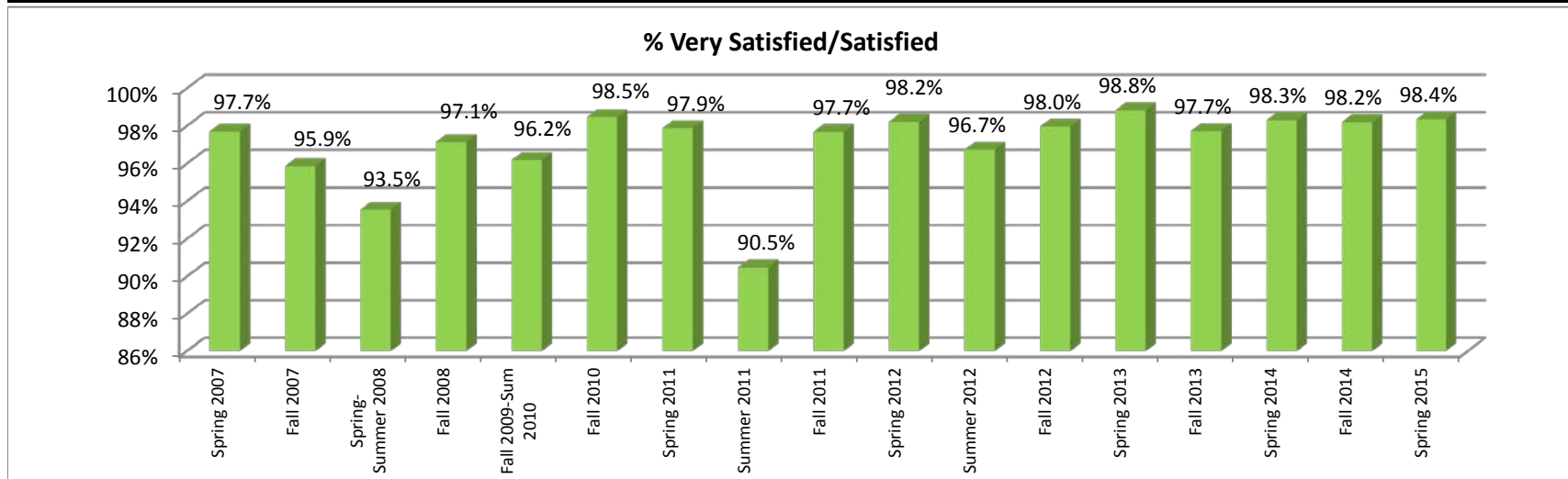
	Yes	%	No	%	Total	%
Fall 2013	47	23.4%	154	76.6%	201	100.0%
Spring 2014	49	25.7%	142	74.3%	191	100.0%
Spring 2015	48	25.4%	141	74.6%	189	100.0%



Success Outcome: 50% answer "Yes" to the question on the Graduating Student Survey.

### 1.19 Student Satisfaction of Instructional Program

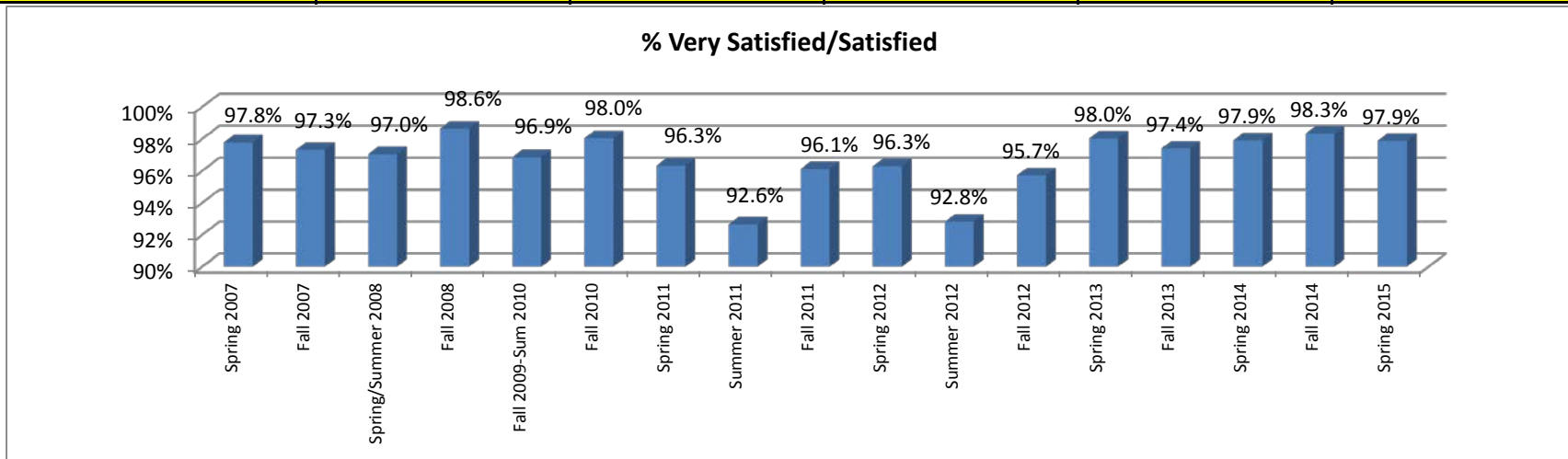
	<i>Very Satisfied/Satisfied</i>	<i>%</i>	<i>Dissatisfied/Very Dissatisfied</i>	<i>%</i>	<i>Total</i>
	<i>Yes</i>	<i>%</i>	<i>No</i>	<i>%</i>	<i>Total</i>
Spring 2007	170	97.7%	4	2.3%	174
Fall 2007	162	95.9%	7	4.1%	169
Spring-Summer 2008	116	93.5%	8	6.5%	124
Fall 2008	204	97.1%	6	2.9%	210
Fall 2009-Sum 2010	554	96.2%	22	3.8%	576
Fall 2010	193	98.5%	3	1.5%	196
Spring 2011	322	97.9%	7	2.1%	329
Summer 2011	114	90.5%	12	9.5%	126
Fall 2011	211	97.7%	5	2.3%	216
Spring 2012	331	98.2%	6	1.8%	337
Summer 2012	148	96.7%	5	3.3%	153
Fall 2012	192	98.0%	4	2.0%	196
Spring 2013	337	98.8%	4	1.2%	341
Fall 2013	215	97.7%	5	2.3%	220
Spring 2014	173	98.3%	3	1.7%	176
Fall 2014	164	98.2%	3	1.8%	167
<b>Spring 2015</b>	<b>179</b>	<b>98.4%</b>	<b>3</b>	<b>1.6%</b>	<b>182</b>



Success Outcome: yes= 95%, annual report assessed by spring % on Graduating Student Survey

### 1.20 Student Satisfaction (met educational objective)

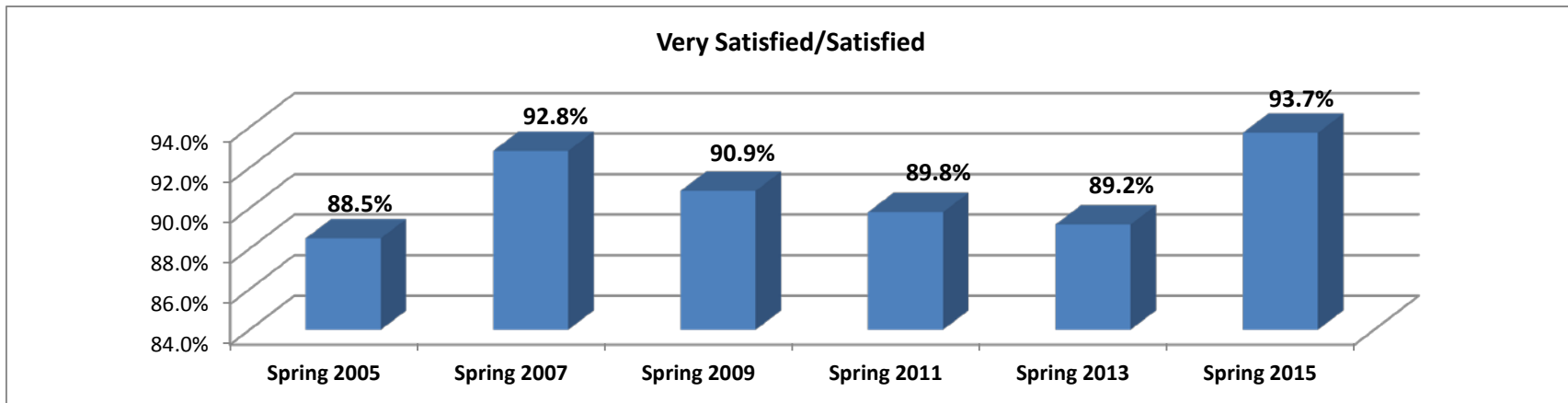
	<i>Very Satisfied/Satisfied</i>	<i>%</i>	<i>Dissatisfied/Very Dissatisfied</i>	<i>%</i>	<i>Total</i>
Spring 2007	176	97.8%	4	2.2%	180
Fall 2007	181	97.3%	5	2.7%	186
Spring/Summer 2008	131	97.0%	4	3.0%	135
Fall 2008	218	98.6%	3	1.4%	221
Fall 2009-Sum 2010	585	96.9%	19	3.1%	604
Fall 2010	200	98.0%	4	2.0%	204
Spring 2011	341	96.3%	13	3.7%	354
Summer 2011	126	92.6%	10	7.4%	136
Fall 2011	223	96.1%	9	3.9%	232
Spring 2012	337	96.3%	13	3.7%	350
Summer 2012	155	92.8%	12	7.2%	167
Fall 2012	201	95.7%	9	4.3%	210
<b>Spring 2013</b>	347	98.0%	7	2.0%	354
Fall 2013	224	97.4%	6	2.6%	230
<b>Spring 2014</b>	187	97.9%	4	2.1%	191
Fall 2014	176	98.3%	3	1.7%	179
<b>Spring 2015</b>	185	<b>97.9%</b>	4	2.1%	189



Success Outcome: yes= 95%; Source: Graduating Student Survey

## 1.22 Student Satisfaction With Support Services

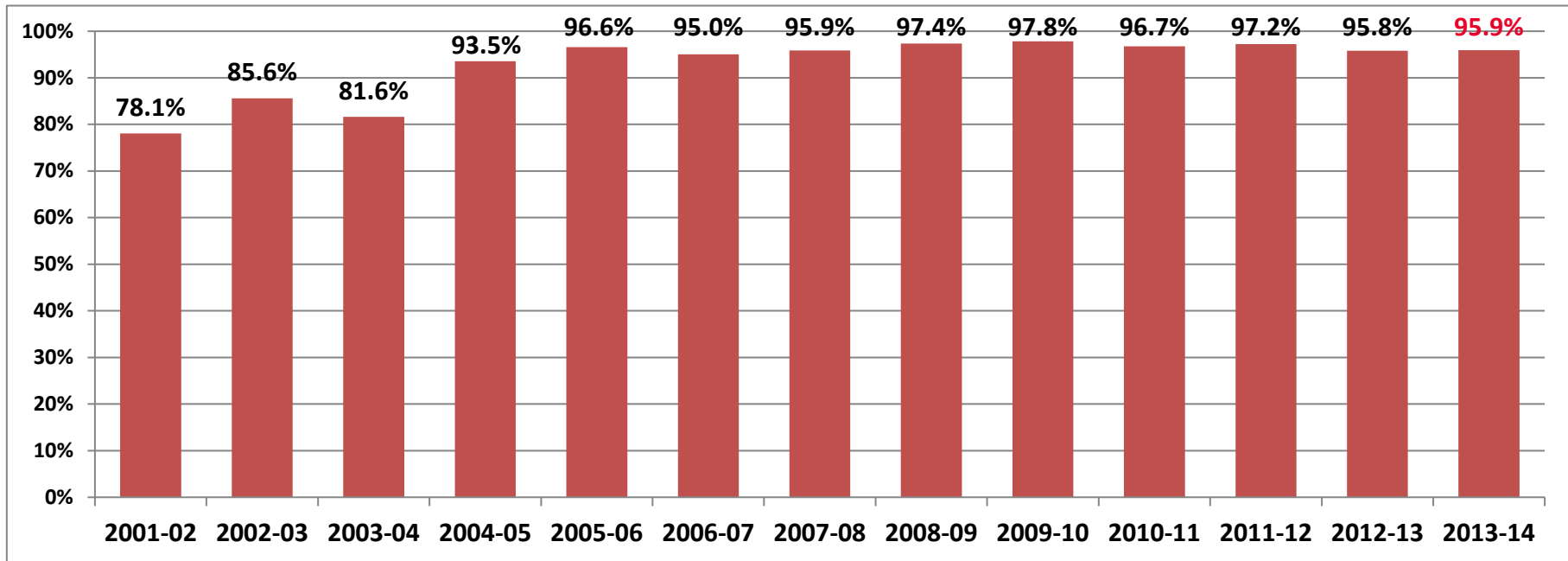
	<i>Very Satisfied/Satisfied</i>	<i>%</i>	<i>Dissatisfied/Very Dissatisfied</i>	<i>%</i>	<i>Total</i>
Spring 2005	701	88.5%	91	11.5%	792
Spring 2007	583	92.8%	45	7.2%	628
Spring 2009	467	90.9%	47	9.1%	514
Spring 2011	414	89.8%	47	10.2%	461
Spring 2013	231	89.2%	28	10.8%	259
Spring 2015	433	<b>93.7%</b>	29	6.3%	462



Success Outcome: yes= 95% on the Student Satisfaction Survey, "Overall, are you satisfied with student services at Kilgore College?" (Excludes "No Opinion" responses)

## 1.21 Licensure Rates

2001-02			2002-03			2003-04			2004-05			2005-06			2006-07		
<i>tested</i>	<i>passed</i>	%	<i>tested</i>	<i>passed</i>	%	<i>tested</i>	<i>passed</i>	%	<i>tested</i>	<i>passed</i>	%	<i>tested</i>	<i>passed</i>	%	<i>tested</i>	<i>passed</i>	%
538	420	78.1%	562	481	85.6%	419	342	81.6%	527	493	93.5%	265	256	96.6%	281	267	95.0%
2007-08			2008-09			2009-10			2010-11			2011-12			2012-13		
<i>tested</i>	<i>passed</i>	%	<i>tested</i>	<i>passed</i>	%	<i>tested</i>	<i>passed</i>	%	<i>tested</i>	<i>passed</i>	%	<i>tested</i>	<i>passed</i>	%	<i>tested</i>	<i>passed</i>	%
558	535	95.9%	420	409	97.4%	642	628	97.8%	615	595	96.7%	545	530	97.2%	553	530	95.8%
2013-14																	
<i>tested</i>	<i>passed</i>	%															
542	520	<b>95.9%</b>															



Success Outcome: 90% pass rate

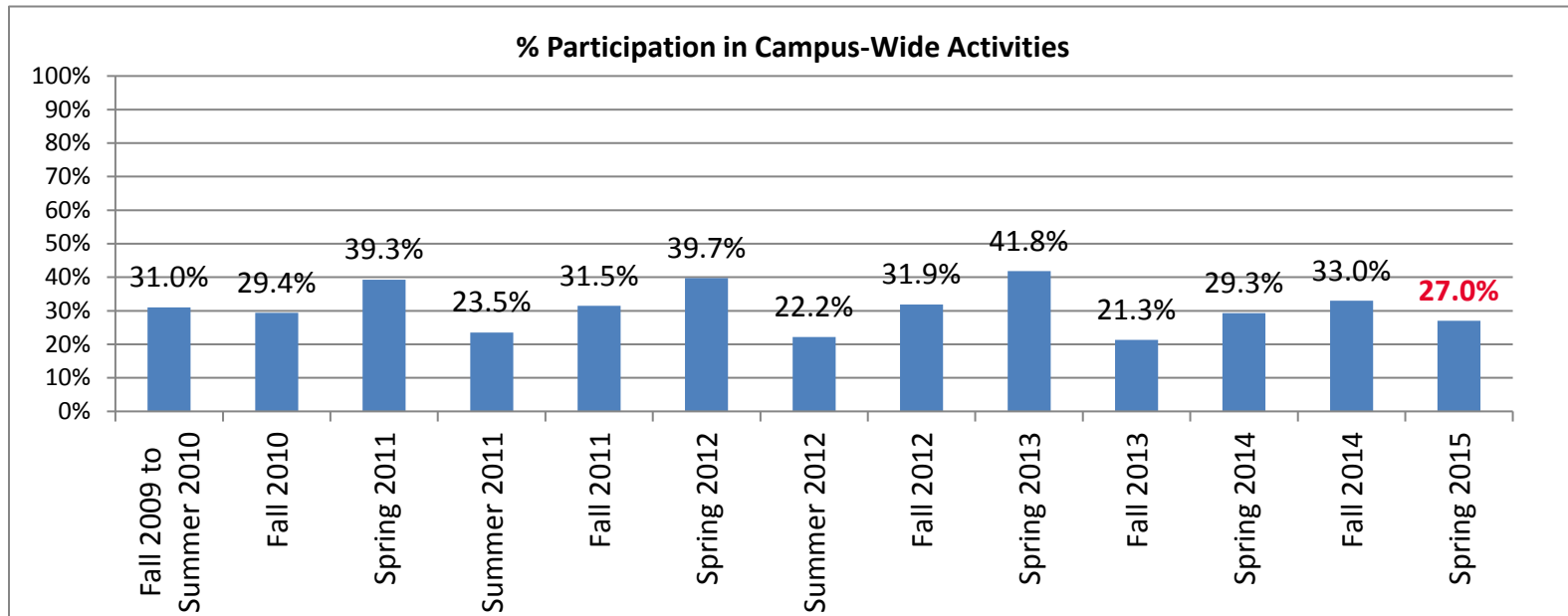
Source: External certification/licensure agencies



### 1.23 Student Life and Experiential Learning: Participation in Campus-Wide Activities

While enrolled at Kilgore College, did you participate in any campus-wide activities, student life programs, experiential learning, or extra-curricular educational programs?

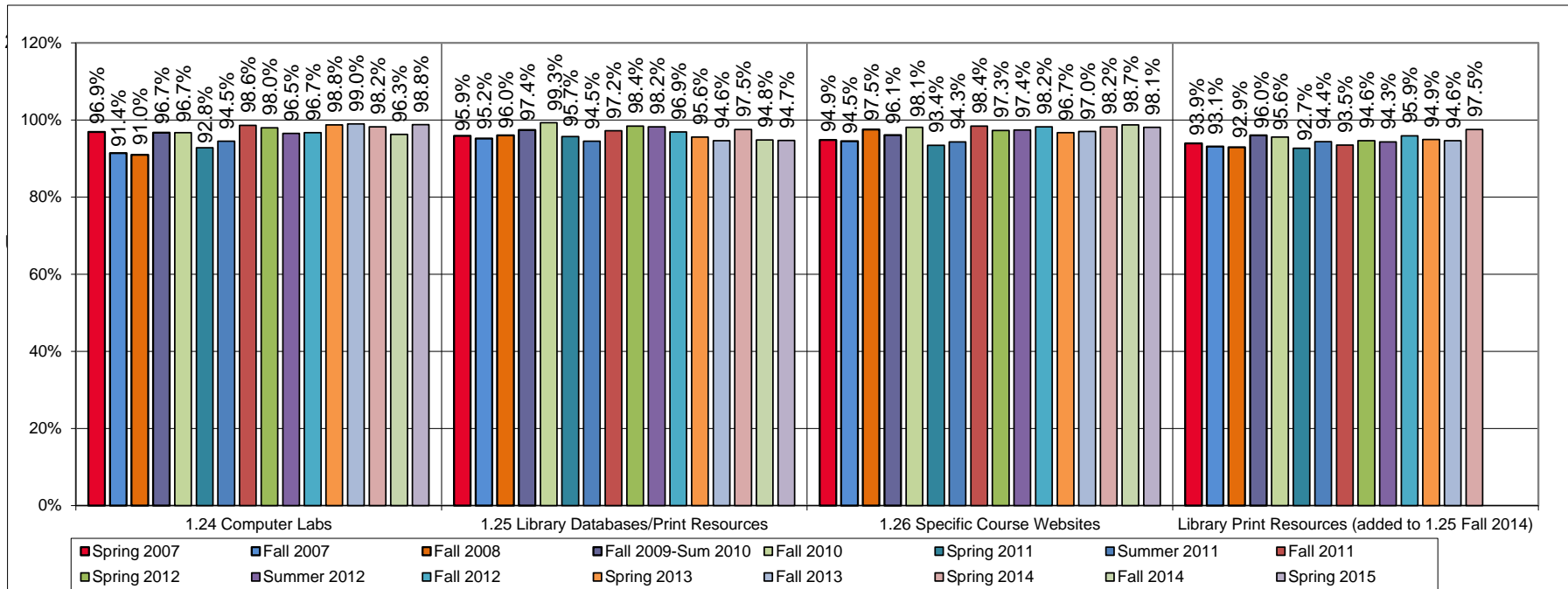
	Yes	% Yes	No	Total
Fall 2009 to Summer 2010	187	31.0%	417	604
Fall 2010	60	29.4%	144	204
Spring 2011	139	39.3%	215	354
Summer 2011	32	23.5%	104	136
Fall 2011	73	31.5%	159	232
Spring 2012	139	39.7%	211	350
Summer 2012	37	22.2%	130	167
Fall 2012	67	31.9%	143	210
Spring 2013	148	41.8%	206	354
Fall 2013	49	21.3%	181	230
Spring 2014	56	29.3%	135	191
Fall 2014	59	33.0%	120	179
Spring 2015	51	27.0%	138	189



Source: Graduating Student Survey

**1.24, 1.25, 1.26 Student Satisfaction: Computer Resources, Library Databases, Library Print Resources, Specific Course Websites**

	<b>1.24 Computer Labs</b>	<b>1.25 Library Databases/Print Resources</b>	<b>1.26 Specific Course Websites</b>	<b>Library Print Resources (added to 1.25 Fall 2014)</b>
Spring 2007	96.9%	95.9%	94.9%	93.9%
Fall 2007	91.4%	95.2%	94.5%	93.1%
Fall 2008	91.0%	96.0%	97.5%	92.9%
Fall 2009-Sum 2010	96.7%	97.4%	96.1%	96.0%
Fall 2010	96.7%	99.3%	98.1%	95.6%
Spring 2011	92.8%	95.7%	93.4%	92.7%
Summer 2011	94.5%	94.5%	94.3%	94.4%
Fall 2011	98.6%	97.2%	98.4%	93.5%
Spring 2012	98.0%	98.4%	97.3%	94.6%
Summer 2012	96.5%	98.2%	97.4%	94.3%
Fall 2012	96.7%	96.9%	98.2%	95.9%
Spring 2013	98.8%	95.6%	96.7%	94.9%
Fall 2013	99.0%	94.6%	97.0%	94.6%
Spring 2014	98.2%	97.5%	98.2%	97.5%
Fall 2014	96.3%	94.8%	98.7%	NA
<b>Spring 2015</b>	<b>98.8%</b>	<b>94.7%</b>	<b>98.1%</b>	<b>NA</b>



Success Outcome: 95% for all variables

Source: Percentage from On-line Graduate Survey (denominator=total students- students who "did not access"; numerator=satisfied+very satisfied students)

### 1.27, 1.28 Workforce Stability

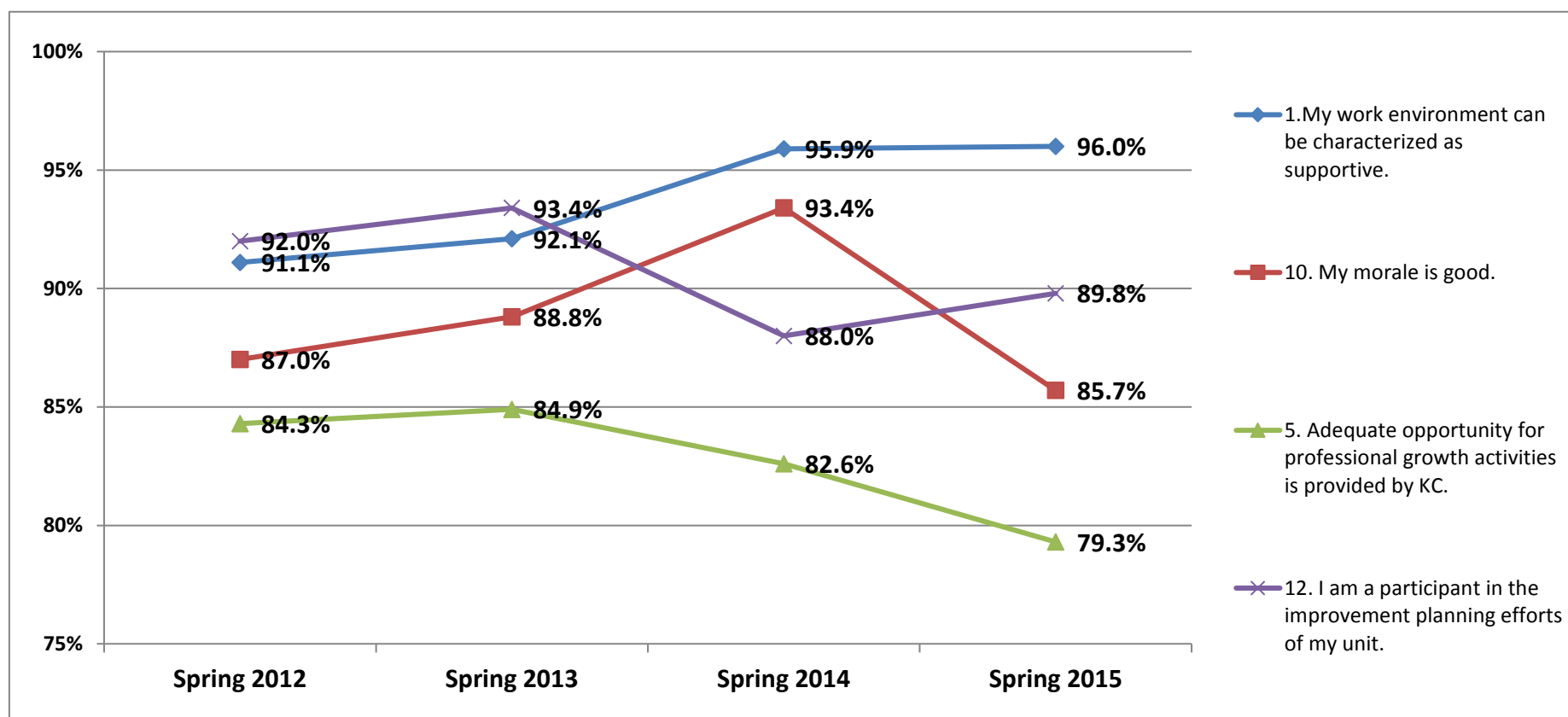
	Average Years of KC Service	Change	Turnover Rate	% Change in Percentage Points
<b>FY0405</b>	11.11	NA	7.96%	NA
<b>FY0506</b>	11.06	-0.05	10.00%	2.04%
<b>FY0607</b>	10.97	-0.09	8.72%	-1.28%
<b>FY0708</b>	11.03	0.06	7.75%	-0.97%
<b>FY0809</b>	10.72	-0.31	6.35%	-1.40%
<b>FY0910</b>	10.77	0.05	4.80%	-1.55%
<b>FY1011</b>	11.99	1.22	4.11%	-0.69%
<b>FY1112</b>	11.38	-0.61	12.00%	<b>7.89%</b>
<b>FY1213</b>	11.83	<b>0.45</b>	7.67%	<b>-4.33%</b>
<b>FY1314</b>	<b>11.23</b>	<b>-0.60</b>	<b>9.70%</b>	<b>2.03%</b>

Success Outcome: increase in average years of service; stable or declining turnover rate

Source: Office Human Resources

## 1.29, 1.30, 1.31, 1.32 Faculty and Staff Satisfaction

#	Former Institutional Effectiveness Survey Statements:	Target	Spring 2005	Spring 2006	Spring 2007	Spring 2008	Spring 2009	Spring 2010	Institutional Effectiveness Survey 2012 Revised Statements:	Spring 2012	Spring 2013	Spring 2014	Spring 2015
1.29	2. Supportive and collegial work environment	90%	NA	NA	97%	93.3%	93.9%	88.8%	1. My work environment can be characterized as supportive.	91.1%	92.1%	95.9%	96.0%
1.30	12. Acceptable level of employee morale	85%	78.7%	82.3%	83%	81.9%	85.4%	80.0%	10. My morale is good.	87.0%	88.8%	93.4%	85.7%
1.31	6. Opportunities for professional development	90%	81.3%	85.8%	83%	80.0%	87.8%	81.3%	5. Adequate opportunity for professional growth activities is provided by KC.	84.3%	84.9%	82.6%	79.3%
1.32	3. Meaningful involvement in decision making	90%	NA	NA	99%	95.1%	93.8%	95.8%	12. I am a participant in the improvement planning efforts of my unit.	92.0%	93.4%	88.0%	89.8%



Success Outcome: At or above target  
 Source: KC Institutional Effectiveness Survey

**1.33 Salary Comparison: Kilgore College Full-time Faculty Versus Texas Two-Year Public Institution Peer Group**

	<b>KC Full-time Faculty Average Salary</b>	<b>Peer Institution Full-time Faculty Average Salary</b>	<b>Difference</b>	<b>Percent Difference</b>
FY 2004	\$ 42,221	\$ 42,897	\$ (676)	-1.6%
FY 2005	\$ 45,028	\$ 43,609	\$ 1,419	3.2%
FY 2006	\$ 42,875	\$ 43,249	\$ (374)	-0.9%
FY 2007	\$ 45,120	\$ 44,823	\$ 297	0.7%
FY 2008	\$ 46,378	\$ 46,082	\$ 296	0.6%
FY 2009	\$ 46,969	\$ 46,525	\$ 444	0.9%
FY 2010	\$ 50,959	\$ 47,710	\$ 3,249	6.4%
FY 2011	\$ 51,599	\$ 49,609	\$ 1,990	3.9%
FY 2012	\$ 52,175	\$ 47,825	\$ 4,350	8.3%
FY 2013	\$ 51,471	\$ 47,223	\$ 4,248	8.3%
<b>FY 2014</b>	<b>\$ 52,605</b>	<b>\$ 51,813</b>	<b>\$ 792</b>	<b>1.5%</b>

*Success Outcome: faculty salaries above the mean of peer institutions*

*Source: Texas Coordinating Board's public two year average faculty salary report (from CBM008) or IPEDS Data Feedback Report  
Includes faculty reported with 100% of time in direct teaching or direct teaching with some supervisory responsibilities*

*Peer institutions: Angelina, Lee, Midland, South Plains, Temple, TVCC, TJC*

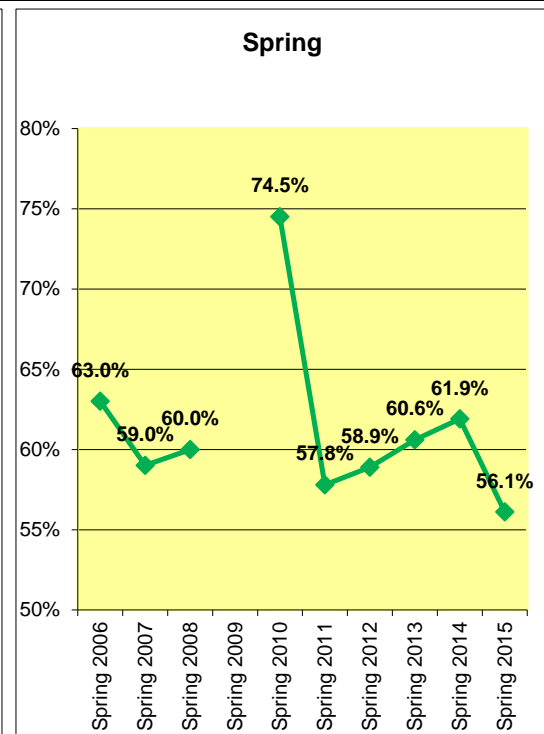
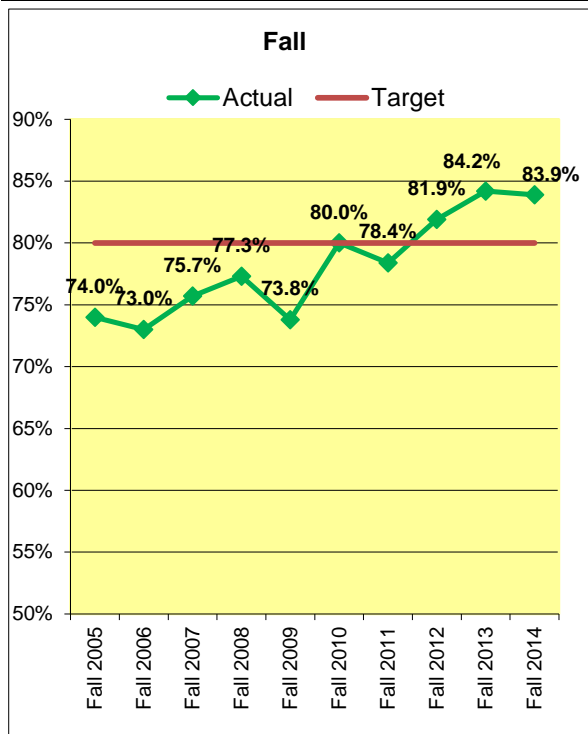
**1.34 Documented Improvement:**  
**% of Units That Met Targets in Annual Improvement Plans**

		<b>%</b>	<b>Target</b>	<b>Difference</b>
Fall 2011	50.0%		60%	-16.7%
Fall 2012	60.2%		60%	0.3%
Fall 2013	69.9%		60%	16.5%
Fall 2014	59.3%		60%	-1.2%

*Success Outcome: 60%*

### 3.1 Percent of Students Who Early Registered

Fall	Actual	Target	Spring	Actual
Fall 2005	74.0%	80%	Spring 2006	63.0%
Fall 2006	73.0%	80%	Spring 2007	59.0%
Fall 2007	75.7%	80%	Spring 2008	60.0%
Fall 2008	77.3%	80%	Spring 2009	NA
Fall 2009	73.8%	80%	Spring 2010	74.5%
Fall 2010	80.0%	80%	Spring 2011	57.8%
Fall 2011	78.4%	80%	Spring 2012	58.9%
Fall 2012	81.9%	80%	Spring 2013	60.6%
Fall 2013	84.2%	80%	Spring 2014	61.9%
<b>Fall 2014</b>	<b>83.9%</b>	80%	Spring 2015	56.1%



Success Outcome: 80%

Source: Student Records

**3.2, 3.3, 3.4 Success (C or better or passing) in Developmental Course Work**

	Fall 2004			Spring 2005			Fall 2005			Spring 2006		
	# Enrolled	# Success	% Per course	# Enrolled	# Success	% Per course	# Enrolled	# Success	% Per course	# Enrolled	# Success	% Per course
<b>English</b>												
<b>0304</b>	44	20	45.5%	24	10	41.7%	46	21	45.7%	33	18	54.5%
<b>0306</b>	34	20	58.8%	32	16	50.0%	43	24	55.8%	40	14	35.0%
<b>0308</b>	216	80	37.0%	207	100	48.3%	275	114	41.5%	225	118	52.4%
<b>Total</b>	<b>294</b>	<b>120</b>	<b>40.8%</b>	<b>263</b>	<b>126</b>	<b>47.9%</b>	<b>364</b>	<b>159</b>	<b>43.7%</b>	<b>298</b>	<b>150</b>	<b>50.3%</b>
<b>Math</b>												
<b>0304</b>	313	146	46.6%	236	118	50.0%	287	161	56.1%	235	115	48.9%
<b>10-2011</b>	313	146	46.6%	236	118	50.0%	287	161	56.1%	235	115	48.9%
<b>0306</b>	587	288	49.1%	461	217	47.1%	524	243	46.4%	414	190	45.9%
<b>0308</b>	534	204	38.2%	534	165	30.9%	493	190	38.5%	490	220	44.9%
<b>Total</b>	<b>1,747</b>	<b>784</b>	<b>44.9%</b>	<b>1,467</b>	<b>618</b>	<b>42.1%</b>	<b>1,591</b>	<b>755</b>	<b>47.5%</b>	<b>1,374</b>	<b>640</b>	<b>46.6%</b>
<b>Reading</b>												
<b>0304</b>	53	22	41.5%	35	9	25.7%	97	49	50.5%	36	16	44.4%
<b>0306</b>	147	86	58.5%	105	50	47.6%	160	96	60.0%	125	66	52.8%
<b>0308</b>	218	159	72.9%	184	117	63.6%	219	144	65.8%	155	103	66.5%
<b>Total</b>	<b>418</b>	<b>267</b>	<b>63.9%</b>	<b>324</b>	<b>176</b>	<b>54.3%</b>	<b>476</b>	<b>289</b>	<b>60.7%</b>	<b>316</b>	<b>185</b>	<b>58.5%</b>
<b>Totals</b>	<b>2,459</b>	<b>1,171</b>	<b>47.6%</b>	<b>2,054</b>	<b>920</b>	<b>44.8%</b>	<b>2,431</b>	<b>1,203</b>	<b>49.5%</b>	<b>1,988</b>	<b>975</b>	<b>49.0%</b>

	Fall 2006			Spring 2007			Fall 2007			Spring 2008		
	# Enrolled	# Success	% Per course	# Enrolled	# Success	% Per course	# Enrolled	# Success	% Per course	# Enrolled	# Success	% Per course
<b>English</b>												
<b>0304</b>	37	22	59.5%	23	9	39.1%	23	14	60.9%	20	10	50.0%
<b>14/2014</b>	42	17	40.5%	40	14	35.0%	44	25	56.8%	37	22	59.5%
<b>0308</b>	280	187	66.8%	184	107	58.2%	296	188	63.5%	187	119	63.6%
<b>Total</b>	<b>359</b>	<b>226</b>	<b>63.0%</b>	<b>247</b>	<b>130</b>	<b>52.6%</b>	<b>363</b>	<b>227</b>	<b>62.5%</b>	<b>244</b>	<b>151</b>	<b>61.9%</b>
<b>Math</b>												
<b>0304</b>	264	140	53.0%	202	75	37.1%	295	143	48.5%	230	108	47.0%
<b>0306</b>	520	227	43.7%	428	170	39.7%	430	200	46.5%	377	156	41.4%
<b>0308</b>	446	197	44.2%	486	164	33.7%	510	203	39.8%	422	176	41.7%
<b>Total</b>	<b>1,230</b>	<b>564</b>	<b>45.9%</b>	<b>1,116</b>	<b>409</b>	<b>36.6%</b>	<b>1,235</b>	<b>546</b>	<b>44.2%</b>	<b>1,029</b>	<b>440</b>	<b>42.8%</b>
<b>Reading</b>												
<b>0304</b>	56	26	46.4%	28	14	50.0%	48	30	62.5%	38	19	50.0%
<b>0306</b>	144	88	61.1%	92	53	57.6%	151	97	64.2%	97	65	67.0%
<b>0308</b>	205	148	72.2%	153	100	65.4%	176	120	68.2%	141	97	68.8%
<b>Total</b>	<b>405</b>	<b>262</b>	<b>64.7%</b>	<b>273</b>	<b>167</b>	<b>61.2%</b>	<b>375</b>	<b>247</b>	<b>65.9%</b>	<b>276</b>	<b>181</b>	<b>65.6%</b>
<b>Totals</b>	<b>1,994</b>	<b>1,052</b>	<b>52.8%</b>	<b>1,636</b>	<b>706</b>	<b>43.2%</b>	<b>1,973</b>	<b>1,020</b>	<b>51.7%</b>	<b>1,549</b>	<b>772</b>	<b>49.8%</b>



**3.2, 3.3, 3.4 Success (C or better or passing) in Developmental Course Work**

	Fall 2008			Spring 2009			Fall 2009			Spring 2010		
	# Enrolled	# Success	% Per course	# Enrolled	# Success	% Per course	# Enrolled	# Success	% Per course	# Enrolled	# Success	% Per course
<b>English</b>												
0304	36	25	69.4%	22	17	77.3%	53	41	77.4%	31	22	71.0%
0306	51	21	41.2%	64	46	71.9%	77	43	55.8%	87	41	47.1%
0308	310	198	63.9%	210	120	57.1%	384	237	61.7%	341	176	51.6%
<b>Total</b>	<b>397</b>	<b>244</b>	<b>61.5%</b>	<b>296</b>	<b>183</b>	<b>61.8%</b>	<b>514</b>	<b>321</b>	<b>62.5%</b>	<b>459</b>	<b>239</b>	<b>52.1%</b>
<b>Math</b>												
0304	310	151	48.7%	248	111	44.8%	425	201	47.3%	354	143	40.4%
0306	418	183	43.8%	383	173	45.2%	472	205	43.4%	471	195	41.4%
0308	417	173	41.5%	411	175	42.6%	476	224	47.1%	445	180	40.4%
<b>Total</b>	<b>1,145</b>	<b>507</b>	<b>44.3%</b>	<b>1,042</b>	<b>459</b>	<b>44.0%</b>	<b>1,373</b>	<b>630</b>	<b>45.9%</b>	<b>1,270</b>	<b>518</b>	<b>40.8%</b>
<b>Reading</b>												
0304	67	42	62.7%	46	25	54.3%	109	64	58.7%	66	34	51.5%
0306	155	105	67.7%	116	77	66.4%	193	123	63.7%	176	115	65.3%
0308	163	125	76.7%	138	91	65.9%	254	164	64.6%	252	169	67.1%
<b>Total</b>	<b>385</b>	<b>272</b>	<b>70.6%</b>	<b>300</b>	<b>193</b>	<b>64.3%</b>	<b>556</b>	<b>351</b>	<b>63.1%</b>	<b>494</b>	<b>318</b>	<b>64.4%</b>
<b>Totals</b>	<b>1,927</b>	<b>1,023</b>	<b>53.1%</b>	<b>1,638</b>	<b>835</b>	<b>51.0%</b>	<b>2,443</b>	<b>1,302</b>	<b>53.3%</b>	<b>2,223</b>	<b>1,075</b>	<b>48.4%</b>

	Fall 2010			Spring 2011			Fall 2011			Spring 2012		
	# Enrolled	# Success	% Per course	# Enrolled	# Success	% Per course	# Enrolled	# Success	% Per course	# Enrolled	# Success	% Per course
<b>English</b>												
0200							27	16	59.3%	11	8	72.7%
0304	56	39	69.6%	23	17	73.9%	61	31	50.8%	29	9	31.0%
0306	77	38	49.4%	103	54	52.4%	97	45	46.4%	79	39	49.4%
0308	484	253	52.3%	379	198	52.2%	442	281	63.6%	346	190	54.9%
<b>Total</b>	<b>617</b>	<b>330</b>	<b>53.5%</b>	<b>505</b>	<b>269</b>	<b>53.3%</b>	<b>627</b>	<b>373</b>	<b>59.5%</b>	<b>465</b>	<b>246</b>	<b>52.9%</b>
<b>Math</b>												
0304	485	217	44.7%	372	157	42.2%	480	255	53.1%	277	100	36.1%
0305										40	30	75.0%
0306	493	216	43.8%	461	210	45.6%	449	186	41.4%	428	199	46.5%
0307										42	33	78.6%
0308	491	185	37.7%	454	199	43.8%	454	221	48.7%	366	174	47.5%
0309										36	23	63.9%
<b>Total</b>	<b>1,469</b>	<b>618</b>	<b>42.1%</b>	<b>1,287</b>	<b>566</b>	<b>44.0%</b>	<b>1,383</b>	<b>662</b>	<b>47.9%</b>	<b>1,189</b>	<b>559</b>	<b>47.0%</b>
<b>Reading</b>												
0304	101	64	63.4%	63	31	49.2%	85	57	67.1%	49	27	55.1%
0306	182	126	69.2%	134	85	63.4%	175	116	66.3%	98	58	59.2%
0308	249	178	71.5%	232	155	66.8%	260	193	74.2%	176	121	68.8%
<b>Total</b>	<b>532</b>	<b>368</b>	<b>69.2%</b>	<b>429</b>	<b>271</b>	<b>63.2%</b>	<b>520</b>	<b>366</b>	<b>70.4%</b>	<b>323</b>	<b>206</b>	<b>63.8%</b>
<b>Totals</b>	<b>2,618</b>	<b>1,316</b>	<b>50.3%</b>	<b>2,221</b>	<b>1,106</b>	<b>49.8%</b>	<b>2,530</b>	<b>1,401</b>	<b>55.4%</b>	<b>1,977</b>	<b>1,011</b>	<b>51.1%</b>

**3.2, 3.3, 3.4 Success (C or better or passing) in Developmental Course Work**

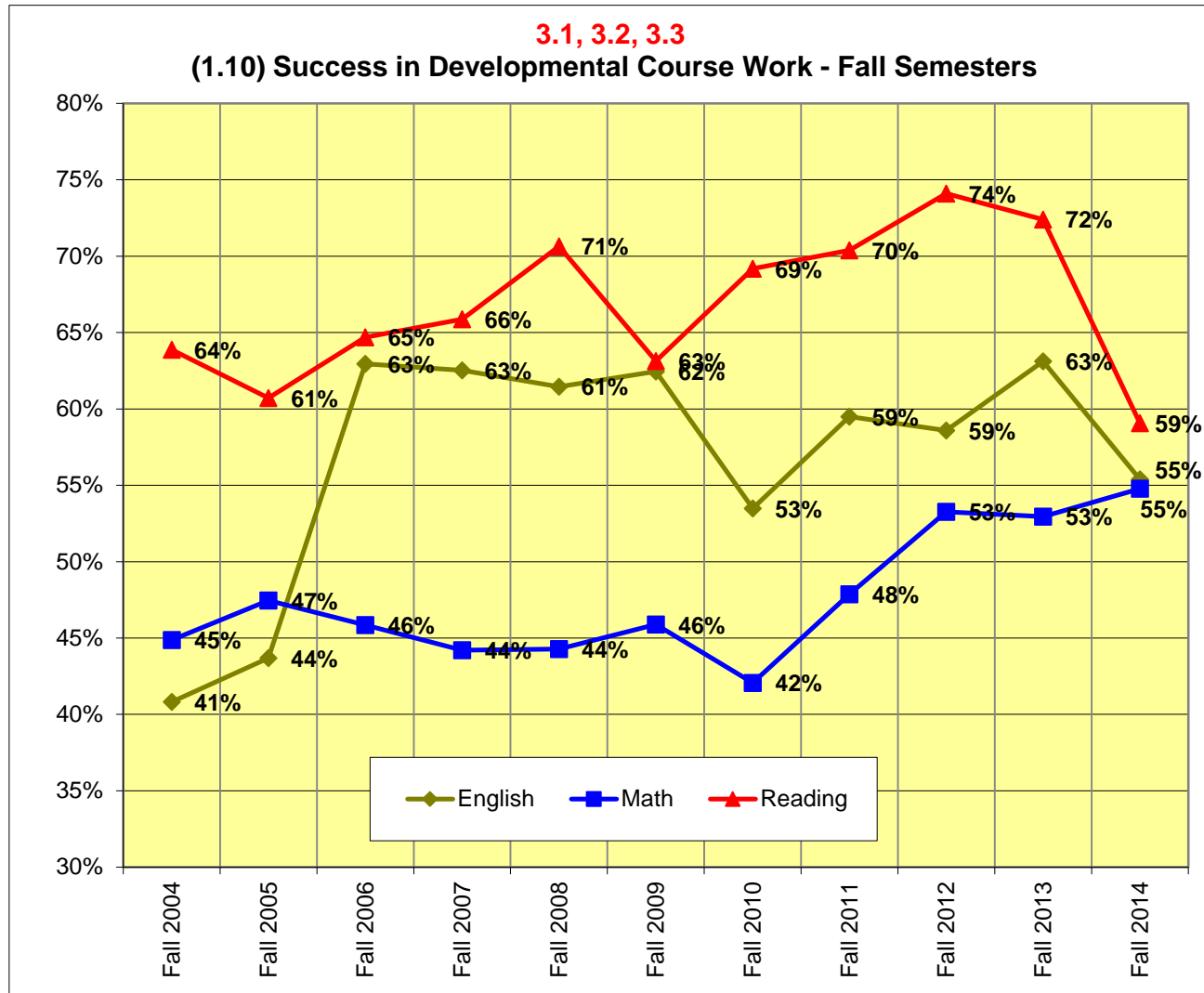
	Fall 2012			Spring 2013			Fall 2013			Spring 2014		
	# Enrolled	# Success	% Per course	# Enrolled	# Success	% Per course	# Enrolled	# Success	% Per course	# Enrolled	# Success	% Per course
<b>English</b>												
0200	24	17	70.8%	20	11	55.0%	35	29	82.9%	4	1	25.0%
0304	42	22	52.4%	27	10	37.0%	38	20	52.6%	42	18	42.9%
0306	91	46	50.5%	53	26	49.1%	81	44	54.3%	53	25	47.2%
0308	358	216	60.3%	292	162	55.5%	268	180	67.2%	126	64	50.8%
0309	38	23	60.5%	9	5	55.6%	66	35	53.0%	32	13	40.6%
<b>Total</b>	<b>553</b>	<b>324</b>	<b>58.6%</b>	<b>401</b>	<b>214</b>	<b>53.4%</b>	<b>488</b>	<b>308</b>	<b>63.1%</b>	<b>257</b>	<b>121</b>	<b>47.1%</b>
<b>Math</b>												
0304	352	188	53.4%	223	107	48.0%	297	144	48.5%	144	79	54.9%
0305	66	42	63.6%	75	41	54.7%	104	61	58.7%	96	65	67.7%
0306	356	167	46.9%	263	111	42.2%	211	108	51.2%	187	87	46.5%
0307	72	58	80.6%	133	97	72.9%	107	74	69.2%	119	86	72.3%
0308	365	174	47.7%	291	140	48.1%	271	118	43.5%	186	84	45.2%
0309	47	41	87.2%	77	66	85.7%	81	62	76.5%	77	48	62.3%
<b>Total</b>	<b>1,258</b>	<b>670</b>	<b>53.3%</b>	<b>1,062</b>	<b>562</b>	<b>52.9%</b>	<b>1,071</b>	<b>567</b>	<b>52.9%</b>	<b>809</b>	<b>449</b>	<b>55.5%</b>
<b>Reading</b>												
0304	79	53	67.1%	39	18	46.2%	75	44	58.7%	56	33	58.9%
0306	148	103	69.6%	98	54	55.1%	148	111	75.0%	75	52	69.3%
0308	190	153	80.5%	133	98	73.7%	143	110	76.9%	119	96	80.7%
<b>Total</b>	<b>417</b>	<b>309</b>	<b>74.1%</b>	<b>270</b>	<b>170</b>	<b>63.0%</b>	<b>366</b>	<b>265</b>	<b>72.4%</b>	<b>250</b>	<b>181</b>	<b>72.4%</b>
<b>Totals</b>	<b>2,228</b>	<b>1,303</b>	<b>58.5%</b>	<b>1,733</b>	<b>946</b>	<b>54.6%</b>	<b>1,925</b>	<b>1,140</b>	<b>59.2%</b>	<b>1,316</b>	<b>751</b>	<b>57.1%</b>

	Fall 2014			Spring 2015			Fall 2015			Spring 2016		
	# Enrolled	# Success	% Per course	# Enrolled	# Success	% Per course	# Enrolled	# Success	% Per course	# Enrolled	# Success	% Per course
<b>English</b>												
0200	11	8	72.7%	13	8	61.5%	0	0	#DIV/0!	0	0	#DIV/0!
0306	156	81	51.9%	63	24	38.1%	0	0	#DIV/0!	0	0	#DIV/0!
0307	77	46	59.7%	40	19	47.5%	0	0	#DIV/0!	0	0	#DIV/0!
0309	164	91	55.5%	186	87	46.8%	0	0	#DIV/0!	0	0	#DIV/0!
<b>Total</b>	<b>408</b>	<b>226</b>	<b>55.4%</b>	<b>302</b>	<b>138</b>	<b>45.7%</b>	<b>0</b>	<b>0</b>	<b>#DIV/0!</b>	<b>0</b>	<b>0</b>	<b>#DIV/0!</b>
<b>Math</b>												
0304	117	58	49.6%	78	32	41.0%	0	0	#DIV/0!	0	0	#DIV/0!
0305	148	78	52.7%	104	54	51.9%	0	0	#DIV/0!	0	0	#DIV/0!
0306	211	90	42.7%	135	70	51.9%	0	0	#DIV/0!	0	0	#DIV/0!
0307	132	85	64.4%	147	97	66.0%	0	0	#DIV/0!	0	0	#DIV/0!
0308	185	108	58.4%	114	73	64.0%	0	0	#DIV/0!	0	0	#DIV/0!
0309	118	80	67.8%	98	58	59.2%	0	0	#DIV/0!	0	0	#DIV/0!
<b>Total</b>	<b>911</b>	<b>499</b>	<b>54.8%</b>	<b>676</b>	<b>384</b>	<b>56.8%</b>	<b>0</b>	<b>0</b>	<b>#DIV/0!</b>	<b>0</b>	<b>0</b>	<b>#DIV/0!</b>

**3.2, 3.3, 3.4 Success (C or better or passing) in Developmental Course Work**

Reading												
<b>0306</b>	171	101	59.1%	63	32	50.8%	0	0	#DIV/0!	0	0	#DIV/0!
<b>Total</b>	171	101	<b>59.1%</b>	63	32	<b>50.8%</b>	0	0	<b>#DIV/0!</b>	0	0	<b>#DIV/0!</b>
<b>Totals</b>	1,490	826	55.4%	1,041	554	53.2%	0	0	#DIV/0!	0	0	#DIV/0!

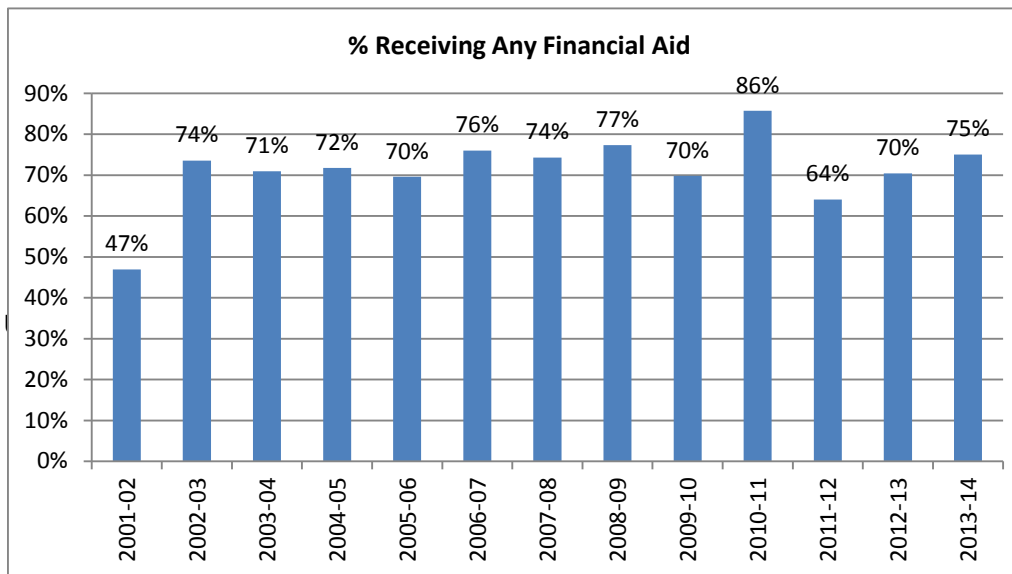
**3.2, 3.3, 3.4 Success (C or better or passing) in Developmental Course Work**



Success Outcome: 55% Overall. Source: Starting Fall 2012, CBM00S; KC Student Grade Records

### 3.5 Students Receiving Financial Aid

Academic Year (AY)	Total Fall First Time In College (FTICFT) Students	Number Receiving Any Financial Aid During the AY	% Receiving Any Financial Aid
2000-01	839	451	54%
2001-02	739	347	47%
2002-03	809	595	74%
2003-04	785	557	71%
2004-05	679	487	72%
2005-06	845	588	70%
2006-07	753	572	76%
2007-08	950	706	74%
2008-09	888	687	77%
2009-10	1044	729	70%
2010-11	1029	882	86%
2011-12	962	616	64%
2012-13	959	675	70%
<b>2013-14</b>	<b>912</b>	<b>684</b>	<b>75%</b>

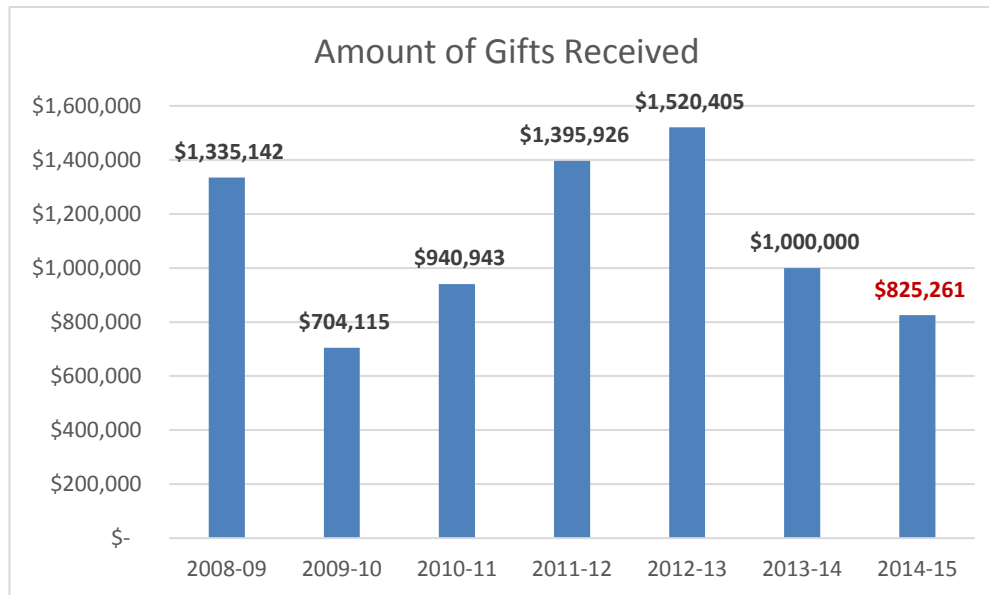


Success Outcome: 69% of student population received financial aid (includes scholarships and loans)

Source: KC student records, National Center for Education Statistics (IPEDS Student Financial Aid)

### 3.6 Gifts From Donors

Year	Amount of Gifts Received	Target	Difference
2008-09	\$ 1,335,142	\$ 1,000,000	33.5%
2009-10	\$ 704,115	\$ 1,000,000	-29.6%
2010-11	\$ 940,943	\$ 1,000,000	-5.9%
2011-12	\$ 1,395,926	\$ 1,000,000	39.6%
2012-13	\$ 1,520,405	\$ 1,000,000	52.0%
2013-14	\$ 1,000,000	\$ 1,000,000	0.0%
2014-15	<b>\$ 825,261</b>	\$ 1,000,000	-17.5%



Success Outcome: \$1,000,000 annual target

### 3.7 Kilgore College Student Population Mirrors Service Area

	KC FY2009			Medium Group B CC Group FY2009			KC FY2010			Medium Group B CC Group FY2010		
	Percent population in service area	Percent credit enrollment	Service difference (% Enr. - % Pop.)	Percent population in service area	Percent credit enrollment	Service difference (% Enr. - % Pop.)	Percent population in service area	Percent credit enrollment	Service difference (% Enr. - % Pop.)	Percent population in service area	Percent credit enrollment	Service difference (% Enr. - % Pop.)
<b>Ethnicity</b>												
White	62.5%	66.6%	4.1%	57.6%	62.1%	4.5%	60.4%	63.7%	3.3%	56.4%	59.9%	3.5%
African-American	19.8%	20.9%	1.1%	11.8%	12.8%	1.0%	20.4%	22.4%	2.0%	12.1%	13.3%	1.2%
Hispanic	16.1%	7.6%	-8.5%	26.9%	21.7%	-5.2%	17.4%	8.9%	-8.5%	27.7%	22.1%	-5.6%
Other	1.6%	5.0%	3.4%	3.7%	3.5%	-0.2%	1.7%	5.1%	3.4%	3.9%	4.8%	0.9%
Sum of African-American, Hispanic, Other	37.5%	33.5%	-4.0%	42.4%	38.0%	-4.4%	39.5%	36.4%	-3.1%	43.7%	40.2%	-3.5%
<b>Gender</b>												
Male	51.3%	36.7%	-14.6%	51.2%	39.6%	-11.6%	51.7%	37.5%	-14.2%	51.4%	40.3%	-11.1%
Female	48.7%	63.3%	14.6%	48.8%	60.4%	11.6%	48.3%	62.5%	14.2%	48.6%	59.7%	11.1%

	KC FY2011			Medium Group B CC Group FY2011			KC FY2012			Medium Group B CC Group FY2012		
	Percent population in service area	Percent credit enrollment	Service difference (% Enr. - % Pop.)	Percent population in service area	Percent credit enrollment	Service difference (% Enr. - % Pop.)	Percent population in service area	Percent credit enrollment	Service difference (% Enr. - % Pop.)	Percent population in service area	Percent credit enrollment	Service difference (% Enr. - % Pop.)
<b>Ethnicity</b>												
White	59.0%	59.1%	0.1%	55.4%	55.9%	0.5%	61.7%	61.1%	-0.6%	55.2%	54.9%	-0.3%
African-American	20.6%	23.4%	2.8%	12.2%	13.5%	1.3%	18.6%	23.5%	4.9%	11.8%	14.1%	2.3%
Hispanic	18.7%	10.3%	-8.4%	28.5%	23.7%	-4.8%	17.0%	11.0%	-6.0%	27.3%	24.5%	-2.8%
Other	1.8%	7.3%	5.5%	4.0%	6.9%	2.9%	2.6%	4.4%	1.8%	5.7%	6.4%	0.7%
Sum of African-American, Hispanic, Other	41.1%	41.0%	-0.1%	44.7%	44.1%	-0.6%	38.2%	38.9%	0.7%	44.8%	45.0%	0.2%
<b>Gender</b>												
Male	51.7%	37.0%	-14.7%	51.4%	40.3%	-11.1%	51.6%	36.5%	-15.1%	50.7%	39.4%	-11.3%
Female	48.3%	63.0%	14.7%	48.6%	59.7%	11.1%	48.4%	63.5%	15.1%	49.3%	60.6%	11.3%

	KC FY2013			Medium Group B CC Group FY2013			KC FY2014			Medium Group B CC Group FY2014		
	Percent population in service area	Percent credit enrollment	Service difference (% Enr. - % Pop.)	Percent population in service area	Percent credit enrollment	Service difference (% Enr. - % Pop.)	Percent population in service area	Percent credit enrollment	Service difference (% Enr. - % Pop.)	Percent population in service area	Percent credit enrollment	Service difference (% Enr. - % Pop.)
<b>Ethnicity</b>												
White	61.0%	59.9%	-1.1%	49.2%	50.9%	1.7%	60.4%	58.5%	-1.9%	48.5%	49.8%	1.3%
African-American	18.6%	24.3%	5.7%	11.4%	12.7%	1.3%	18.6%	24.4%	5.8%	11.4%	13.0%	1.6%
Hispanic	17.7%	11.9%	-5.8%	34.3%	30.2%	-4.1%	18.2%	13.6%	-4.6%	34.7%	31.3%	-3.4%
Other	2.7%	3.9%	1.2%	5.2%	6.2%	1.0%	2.8%	3.5%	0.7%	5.3%	5.9%	0.6%
Sum of African-American, Hispanic, Other	39.0%	40.1%	1.1%	50.9%	49.1%	-1.8%	39.6%	41.5%	1.9%	51.4%	50.2%	-1.2%
<b>Gender</b>												
Male	51.6%	37.7%	-13.9%	50.7%	39.4%	-11.3%	51.7%	39.8%	-11.9%	50.7%	40.2%	-10.5%
Female	48.4%	62.3%	13.9%	49.3%	60.6%	11.3%	48.3%	60.2%	11.9%	49.3%	59.8%	10.5%

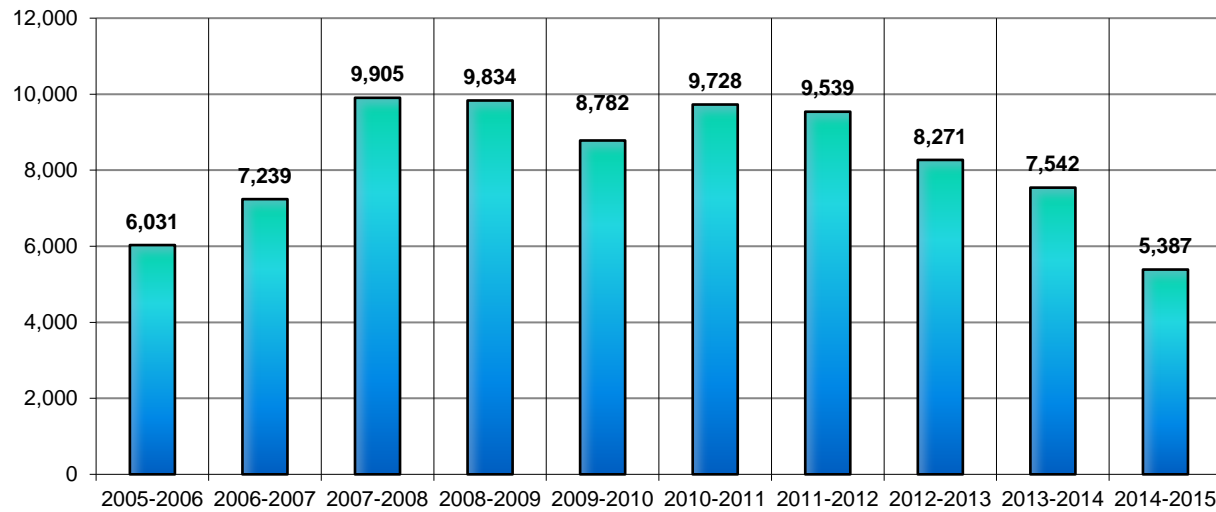
Target: Minority group is at or above Med peer Group. Source: Texas State Data Center, CBM001; CB Accountability System #4 Service area representation: gap between the percentage of demographic groups in the service area and enrolled in the community college.

Success Outcome: student population mirrors service area as compared to peers

## 4.1 Enrollment in Continuing Education

2002-2015

	1st qtr	2nd qtr	3rd qtr	4th qtr	Total	% change
<b>2005-2006</b>	1,902	848	1,852	1,429	6,031	NA
<b>2006-2007</b>	2,036	1,921	1,638	1,644	7,239	20.0%
<b>2007-2008</b>	2,891	1,809	2,993	2,212	9,905	36.8%
<b>2008-2009</b>	2,259	2,585	2,452	2,538	9,834	-0.7%
<b>2009-2010</b>	2,266	1,293	2,816	2,407	8,782	-10.7%
<b>2010-2011</b>	2,848	2,373	2,391	2,116	9,728	10.8%
<b>2011-2012</b>	3,322	1,840	2,520	1,857	9,539	-1.9%
<b>2012-2013</b>	2,129	1,709	2,260	2,173	8,271	-13.3%
<b>2013-2014</b>	2,935	1,597	1,748	1,262	7,542	-8.8%
<b>2014-2015</b>	1,231	1,366	1,430	1,360	<b>5,387</b>	-28.6%



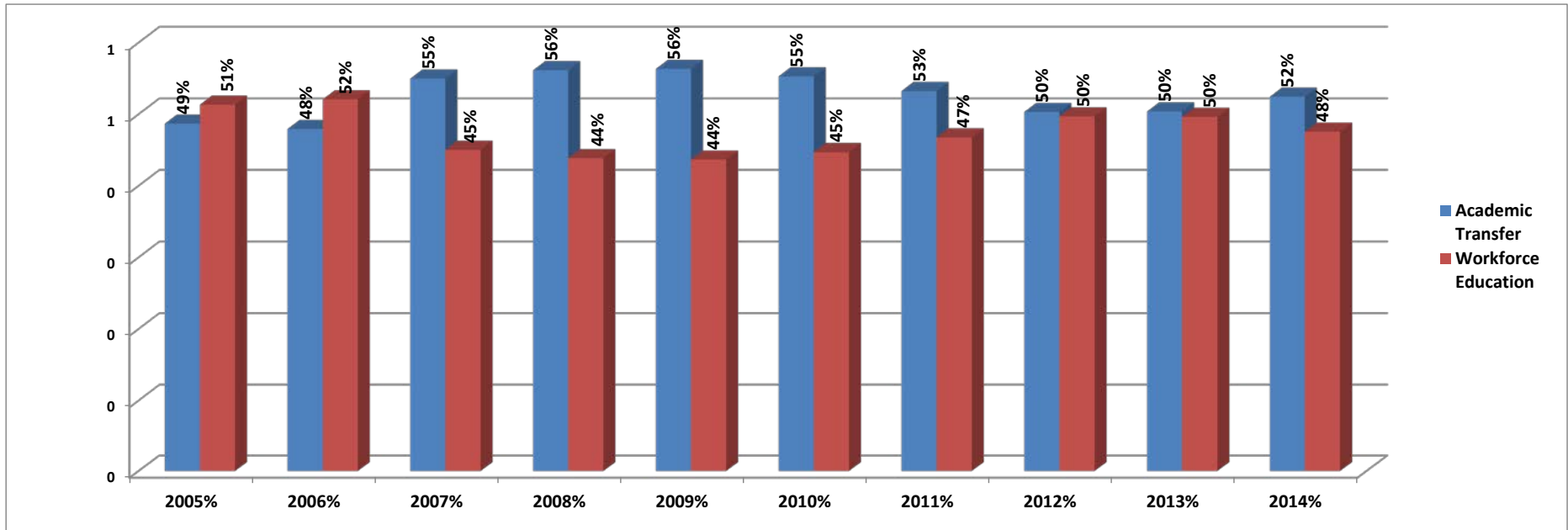
Success Outcome= annual increase

Source: CBM00A



### 4.2a Headcount By Type Major - Fall Semesters 2005-2014

Major Type	2005	2005%	2006	2006%	2007	2007%	2008	2008%	2009	2009%	2010	2010%	2011	2011%	2012	2012%	2013	2013%	2014	2014%
Academic Transfer	2,748	49%	2,659	48%	2,844	55%	3,075	56%	3,566	56%	3,683	55%	3,383	53%	3,122	50%	2,943	50%	3,010	52%
Workforce Education	2,898	51%	2,888	52%	2,329	45%	2,402	44%	2,764	44%	2,978	45%	2,972	47%	3,083	50%	2,899	50%	2,730	48%
<b>Total Majors</b>	<b>5,646</b>		<b>5,547</b>		<b>5,173</b>		<b>5,477</b>		<b>6,330</b>		<b>6,661</b>		<b>6,355</b>		<b>6,205</b>		<b>5,842</b>		<b>5,740</b>	

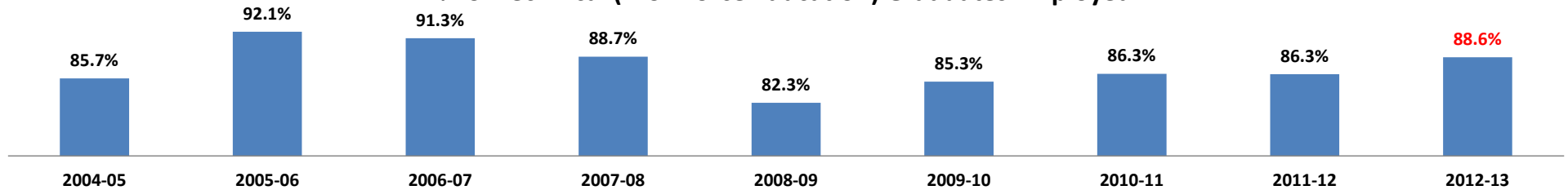


Source: Texas Higher Education Coordinating Board PREP, CBM001 (excluding flex-entry only)

### 4.3. Employment Success Rates

Percent of students either employed and/or enrolled in a Texas senior institution within one year of graduation	2004-05 Graduates		2005-06 Graduates		2006-07 Graduates		2007-08 Graduates		2008-09 Graduates		2009-10 Graduates		2010-11 Graduates		2011-12 Graduates		2012-13 Graduates	
<b>Academic</b>																		
Employed Only	125	34.2%	164	37.7%	99	36.4%	86	34.5%	86	32.5%	107	37.3%	107	36.3%	150	41.0%	141	36.4%
Employed and Enrolled (in Senior Institutions)	161	44.0%	158	36.3%	76	27.9%	77	30.9%	78	29.4%	70	24.4%	65	22.0%	84	23.0%	89	23.0%
Enrolled Only (in Senior Institutions)	48	13.1%	72	16.6%	58	21.3%	60	24.1%	75	28.3%	74	25.8%	77	26.1%	88	24.0%	83	21.4%
Enrolled Only (in Community Colleges)	6	1.6%	22	5.1%	14	5.1%	17	6.8%	13	4.9%	20	7.0%	22	7.5%	20	5.5%	21	5.4%
Not Found	26	7.1%	19	4.4%	25	9.2%	9	3.6%	13	4.9%	16	5.6%	24	8.1%	24	6.6%	53	13.7%
Total Academic	366	37.8%	435	35.9%	272	27.7%	249	24.4%	265	24.7%	287	24.3%	295	23.7%	366	28.8%	387	31.4%
Academic Employed/Enrolled	340	92.9%	416	95.6%	247	90.8%	240	96.4%	252	95.1%	271	94.4%	271	91.9%	342	93.4%	334	86.3%
<b>Academic Employed</b>	<b>286</b>	<b>78.1%</b>	<b>322</b>	<b>74.0%</b>	<b>175</b>	<b>64.3%</b>	<b>163</b>	<b>65.5%</b>	<b>164</b>	<b>61.9%</b>	<b>177</b>	<b>61.7%</b>	<b>172</b>	<b>58.3%</b>	<b>234</b>	<b>63.9%</b>	<b>230</b>	<b>59.4%</b>
<b>Technical/Workforce Education</b>																		
Employed Only	501	83.2%	699	90.0%	640	90.1%	668	86.8%	654	80.7%	752	84.0%	803	84.3%	755	83.4%	744	88.0%
Employed and Enrolled (in Senior Institutions)	15	2.5%	17	2.2%	8	1.1%	15	1.9%	13	1.6%	11	1.2%	19	2.0%	26	2.9%	5	0.6%
Enrolled Only (in Senior Institutions)	2	0.3%	1	0.1%	8	1.1%	10	1.3%	13	1.6%	7	0.8%	6	0.6%	12	1.3%	7	0.8%
Enrolled Only (in Community Colleges)	17	2.8%	12	1.5%	25	3.5%	40	5.2%	58	7.2%	51	5.7%	39	4.1%	51	5.6%	36	4.3%
Not Found	67	11.1%	48	6.2%	29	4.1%	37	4.8%	72	8.9%	74	8.3%	85	8.9%	61	6.7%	53	6.3%
Total Technical/Workforce Education	602	62.2%	777	64.1%	710	72.3%	770	75.6%	810	75.3%	895	75.7%	952	76.3%	905	71.2%	845	68.6%
Technical/Workforce Education Employed/Enrolled	535	88.9%	729	93.8%	681	95.9%	733	95.2%	738	91.1%	821	91.7%	867	91.1%	844	93.3%	792	93.7%
<b>4.3 Technical/Workforce Education Employed</b>	<b>516</b>	<b>85.7%</b>	<b>716</b>	<b>92.1%</b>	<b>648</b>	<b>91.3%</b>	<b>683</b>	<b>88.7%</b>	<b>667</b>	<b>82.3%</b>	<b>763</b>	<b>85.3%</b>	<b>822</b>	<b>86.3%</b>	<b>781</b>	<b>86.3%</b>	<b>749</b>	<b>88.6%</b>
<b>Total Graduates Employed</b>	<b>802</b>	<b>82.9%</b>	<b>1038</b>	<b>85.6%</b>	<b>823</b>	<b>83.8%</b>	<b>846</b>	<b>83.0%</b>	<b>831</b>	<b>77.3%</b>	<b>940</b>	<b>79.5%</b>	<b>994</b>	<b>79.7%</b>	<b>1015</b>	<b>79.9%</b>	<b>979</b>	<b>79.5%</b>
Total Academic and Technical/Workforce Education Placement Rate	968	90.4%	1212	94.5%	982	94.5%	1019	95.5%	1075	92.1%	1182	92.4%	1247	91.3%	1271	93.3%	1232	91.4%

**% of Technical (Workforce Education) Graduates Employed**

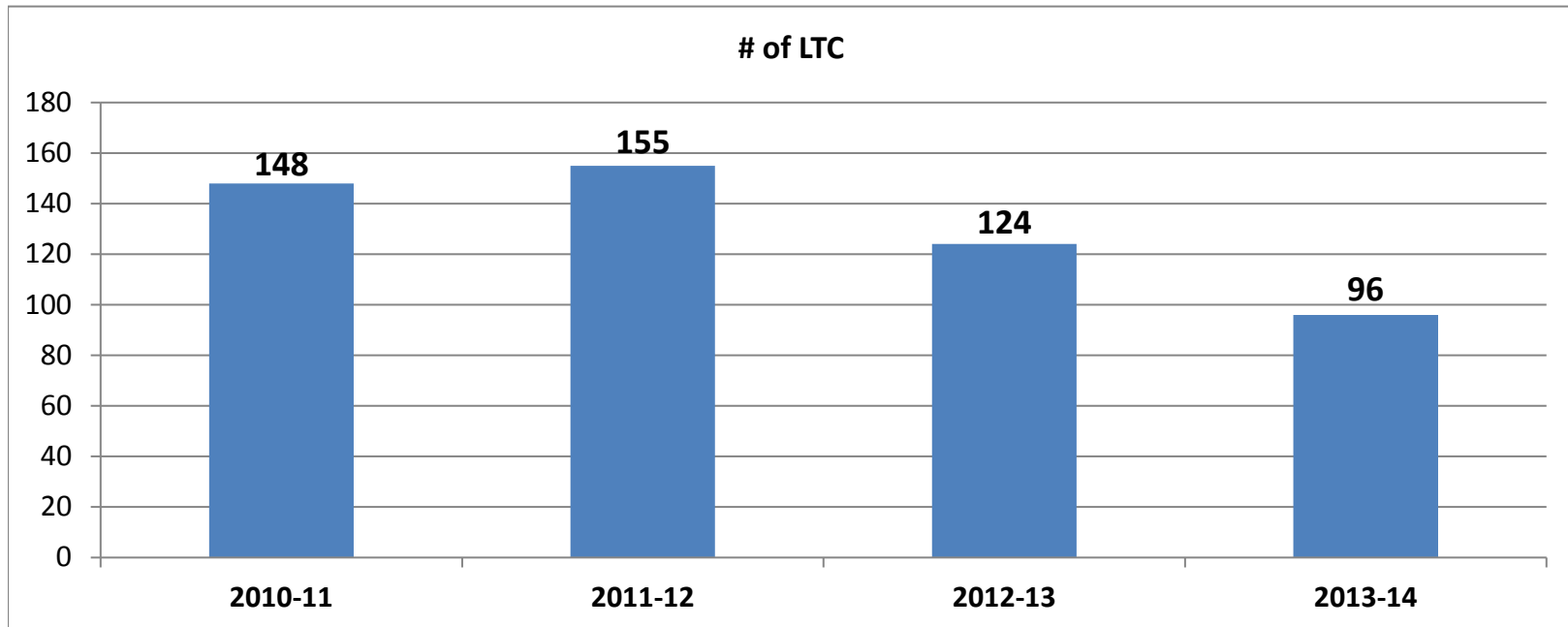


(KC) Success Outcome= 90% placement

Source: CB Accountability System #20 Graduate Success After Graduation & CB116

#### 4.4 Number of Long Term Clients (LTC) of North Texas Small Business Development Center

Year	# of LTC	% Change
2010-11	148	NA
2011-12	155	4.7%
2012-13	124	-20.0%
2013-14	96	-22.6%
2014-15	158	64.6%

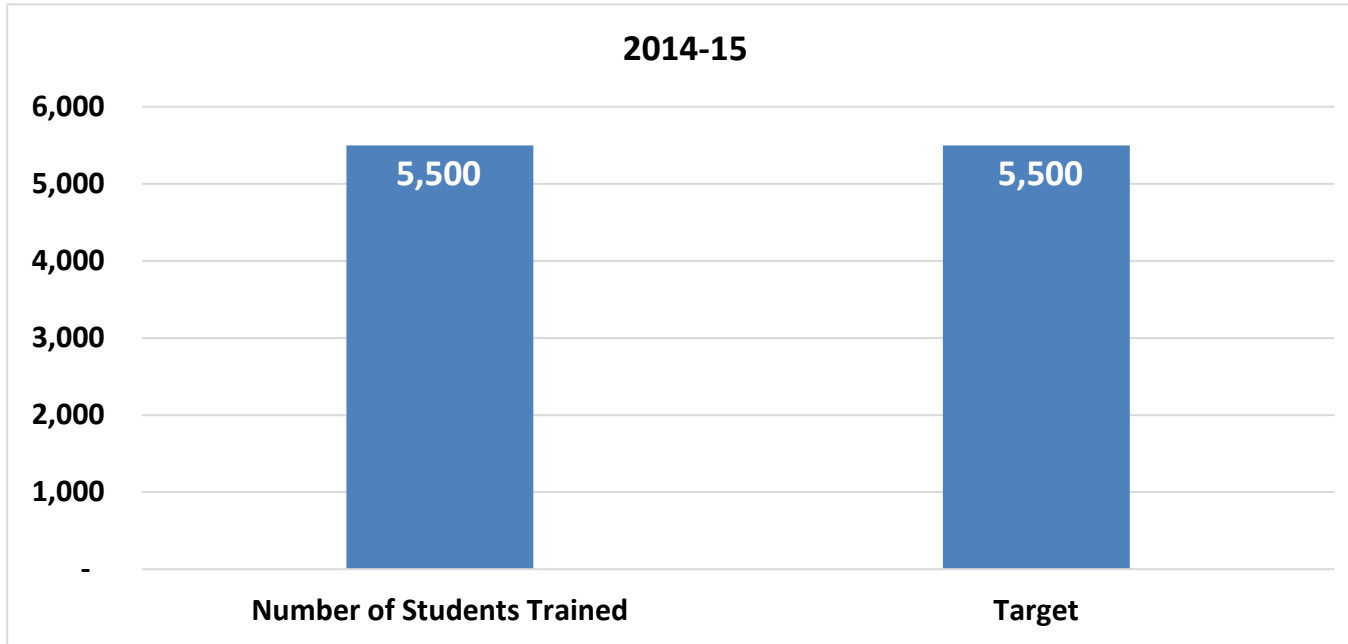


Annual numerical increase

Source: NTSBDC

**4.6 Number of Partnerships With Business and Industry Entities  
(Workforce Development Training)**

Measure/Outcome	Number of Students Trained	Target	Difference
2014-15	5,500	5,500	0%



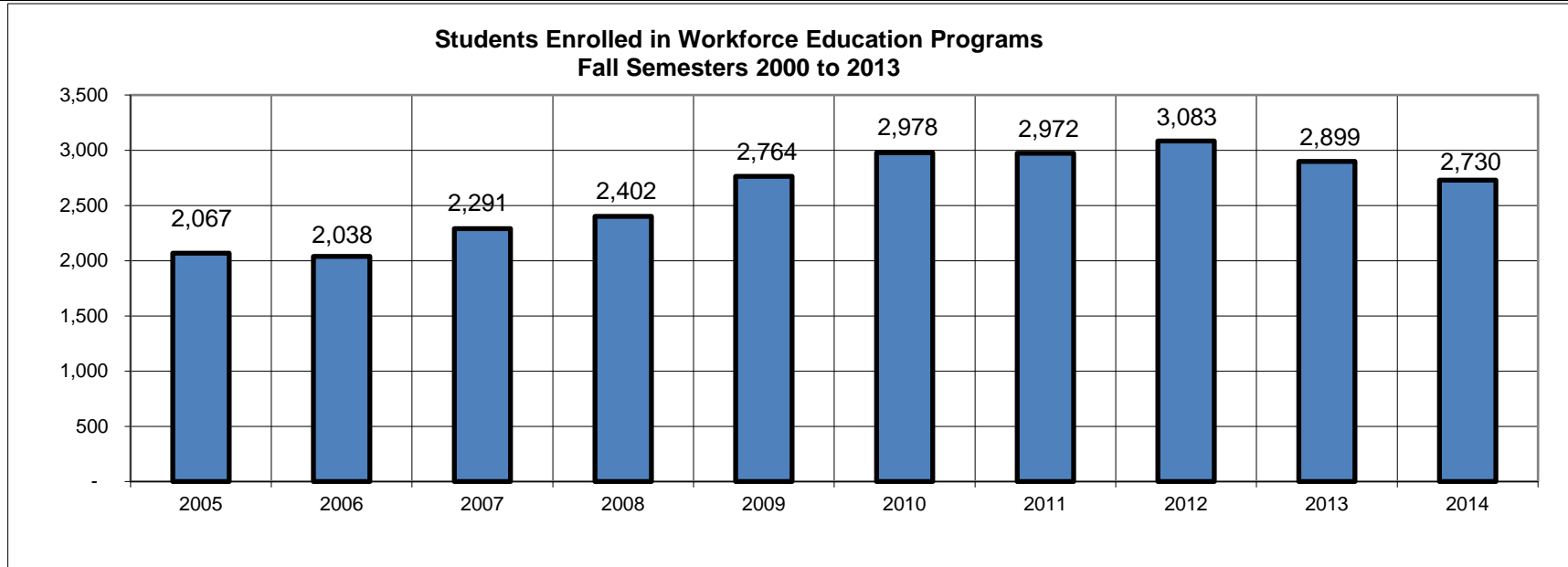
*Target: Increase the number of students enrolled*

**4.2 Number of Students Enrolled in Workforce Education Programs  
Enrollment By Declared Majors - Fall Semesters 2000 - 2014**

<b>WORKFORCE EDUCATION MAJORS</b>	<b>CIP NO.</b>	<b>2005</b>	<b>2006</b>	<b>2007</b>	<b>2008</b>	<b>2009</b>	<b>2010</b>	<b>2011</b>	<b>2012</b>	<b>2013</b>	<b>2014</b>
Farm/Farm and Ranch Management	01010400	2				1					
Computer Systems Networking	11090100	30	29	42	34	44	58	54	61	60	66
Computer and Information Systems Security	11100300			3	7	15	16	15	5	3	
Web/Multimedia Management and Webmaster	11100400	9	5	1				3			
Cosmetology/Cosmetologist, General	12040100	66	49	49	124	127	131	118	163	144	143
Facial Treatment Specialist/Facialist	12040800						14	12	11	11	11
Nail Technician/Specialist and Manicurist	12041000			12	13	11	13	10	11	9	3
Culinary Arts	12050000								73	79	54
Electrical, Electronic and Communication	15030300	17									
Corrosion/Metallurgical Technology/Technician	15061100	63	73	74	121	120	118	121	107	146	171
Manufacturing Technology/Technician	15061300				14	26	30	37	44	37	39
Occupational Safety and Health Tech	15070100	23	24	51	59	70	60	65	73	84	81
Drafting and Design Technology/Tech	15130100	23	31	33	32	32	35	30	27	17	30
Child Care and Support Services Mgmt	19070800	8	7	4	3	5	8	3	2	3	1
Child Care Provider/Assistant	19070900	36	29	43	41	52	79	93	79	46	32
Child Care Services Manager	20020300				34						
Updated 7/14/2014	22030200	63	70	62	60	76	102	94	82	65	66
Court Reporting/Court Reporter	22030300	37	34	47		33	15				
Process/Chemical Technology/Technician	41030100			35	60	49	51	80	104	137	149
Criminal Justice/Safety Studies	43010400	6	7	3							26
Fire Protection Technology	43020300						14	30	27	27	20
Computer Installation and Repair Tech	47010400		19	14	13	2			1		
Heating, Air Conditioning, Ventilation	47020100	19	16	19	14	24	35	28	32	31	22
Autobody/Collision and Repair Technology	47060300	36	26	24	26	32	42	20	13	31	26
Automobile/Automotive Mechanics Tech	47060400	27	30	32	27	49	43	44	66	60	48
Diesel Mechanics Technology/Technician	47060500	23	33	23	28	32	33	26	31	40	35
Welding Technology/Welder	48050800	22	12	28	48	55	62	63	114	110	73
Commercial and Advertising Art	50040200	55	46	40	49	64	56	76	58	43	47
Commercial Photography	50040600	17	31	41	49	61	55	52	41	33	29
Medical Administrative/Executive Assistant	51071600	2	3	10	1	1		1	1	1	1
Medical/Clinical Assistant	51080100	24	21	38	10	3		2			1
Physical Therapist Assistant	51080600	38	33	136	136	186	215	184	185	167	164
Emergency Medical Technology/Technician	51090400	81	59	40	36	71	93	75	67	62	57
Surgical Technology/Technologist	51090900	12	11	36	37	56	52	50	57	40	34
Radiologic Technology/Science	51091100	38	37	210	225	224	220	209	194	185	157
Clinical/Medical Laboratory Technician	51100400	7	3	1	1	1					
Nursing - Registered Nurse Training	51380100	152	137	689	698	817	879	852	816	800	705
Licensed Practical /Vocational Nurse Training	51390100	90	69	143	113	126	139	163	151	126	131
Business/Commerce, General	52010100	60	80	100	119	118	111	129	156	135	140
Business Administration and Management	52020100	24	28	33	32	32	33	30	31	29	31
Accounting	52030100	10	9	13	15	13	10	8	6	5	4
Accounting Technology/Technician	52030200	30	48	45	59	65	78	89	98	66	66
Executive Assistant/Executive Secretary	52040200	73	72	67	52	58	59	80	79	57	65
Management Information Systems, General	52120100	13	7	12	12	13	19	26	17	10	2
<b>Total Declared Workforce Education Majors</b>		<b>1,236</b>	<b>1,188</b>	<b>2,253</b>	<b>2,402</b>	<b>2,764</b>	<b>2,978</b>	<b>2,972</b>	<b>3,083</b>	<b>2,899</b>	<b>2,730</b>
<b>% Annual Change</b>			<b>-3.9%</b>	<b>89.6%</b>	<b>6.6%</b>	<b>15.1%</b>	<b>7.7%</b>	<b>-0.2%</b>	<b>3.7%</b>	<b>-6.0%</b>	<b>-5.8%</b>
Undeclared		831	850	38	0	0	0	0	0	0	0

**4.2 Number of Students Enrolled in Workforce Education Programs  
Enrollment By Declared Majors - Fall Semesters 2000 - 2014**

WORKFORCE EDUCATION MAJORS	CIP NO.	2005	2006	2007	2008	2009	2010	2011	2012	2013	2014
Total Workforce Education Majors		2,067	2,038	2,291	2,402	2,764	2,978	2,972	3,083	2,899	<b>2,730</b>
% Annual Change			-1.4%	12.4%	4.8%	15.1%	7.7%	-0.2%	3.7%	-6.0%	-5.8%



Success Outcome: annual increase

Source: CBM001, excluding flex-entry, pre-admission health majors added to health majors starting Fall 2007