

Community College Survey of Student Engagement  
2004 Benchmark Summary Table - All Students  
**Kilgore College**

All Students				
Benchmark	Kilgore College	Comparison Group Statistics		
			Medium Colleges	2004 Colleges
<b>Active and Collaborative Learning</b>	46.8	Benchmark Score	49.0	50.0
		Score Difference	-2.2	-3.2
<b>Student Effort</b>	47.0	Benchmark Score	50.2	50.0
		Score Difference	-3.1	-3.0
<b>Academic Challenge</b>	45.4	Benchmark Score	49.6	50.0
		Score Difference	-4.1	-4.6
<b>Student-Faculty Interaction</b>	47.6	Benchmark Score	49.2	50.0
		Score Difference	-1.5	-2.4
<b>Support for Learners</b>	48.2	Benchmark Score	49.7	50.0
		Score Difference	-1.5	-1.8
		Number of Colleges	35	152

**Benchmark Score:** Each benchmark score was computed by averaging the scores on survey items that comprise that benchmark. To compensate for disproportionately large numbers of full-time students in the sample, all means used in the creation of the benchmarks are weighted by full- and part-time status. Benchmark scores are standardized so that the weighted mean across all students is 50 and the standard deviation across all participating students is 25. Institutions' benchmark scores are computed by taking the weighted average of their students' standardized scores.

**Score Difference:** The result of subtracting the comparison group score (same size colleges or 2004 colleges) from your college's score on each benchmark.

**2004 CCSSE Benchmark Deciles**  
**All Students**  
**Kilgore College**

These tables present the range of institutional scores by decile for the five benchmarks of effective educational practice for all participating students. Deciles are percentile scores that divide the frequency of benchmark scores into ten equal groups. Deciles are listed for the entire 2004 participating group of colleges and for each appropriate breakdown according to college size and college urbanicity. A percentile represents the point at or below which a specified percentage of the college benchmark scores fall. For example, the 60th percentile represents the point at or below which 60 percent of the college benchmark scores fall for the respective comparison group. To help you gauge your college's performance relative to the comparison groups, the shaded areas on the national, size, or urbanicity tables indicate the deciles that are less than or equal to your benchmark score.

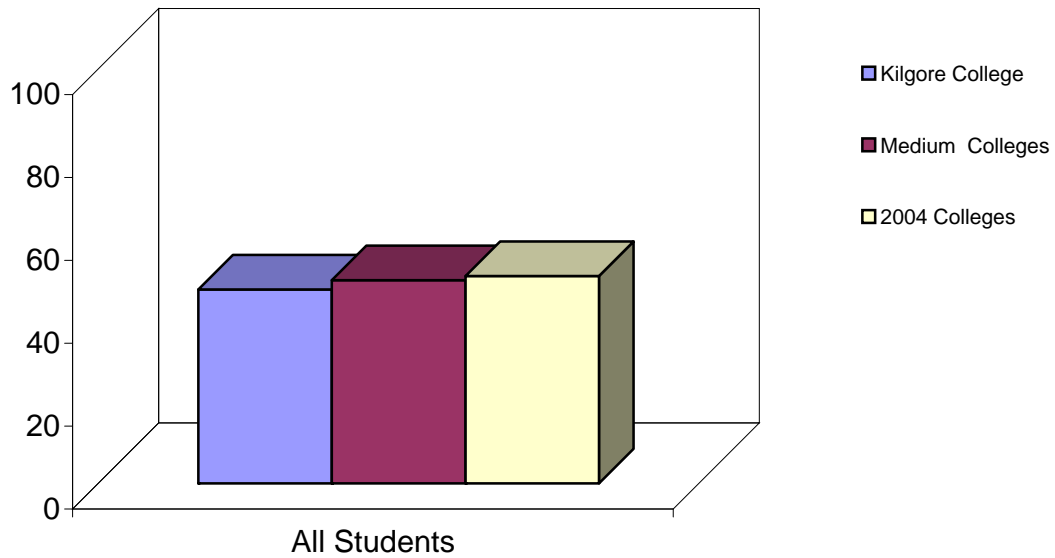
All Students											
All 2004 Colleges	0%	10%	20%	30%	40%	50%	60%	70%	80%	90%	100%
Active and Collaborative Learning	43.6	45.1	46.7	47.9	48.6	49.8	50.6	51.5	52.4	55.1	65.9
Student Effort	43.9	46.1	47.0	48.3	49.4	50.0	51.0	51.9	52.8	54.8	60.7
Academic Challenge	40.8	45.6	47.5	48.5	49.0	49.6	50.6	51.4	52.6	53.8	59.7
Student - Faculty Interaction	43.4	46.3	47.6	48.4	48.9	49.8	50.8	51.4	52.7	54.6	64.5
Support for Learners	41.5	46.0	47.0	48.2	49.0	50.0	51.5	53.0	54.4	56.1	62.4
<b>Small Colleges</b>											
Active and Collaborative Learning	44.0	45.5	47.2	48.6	49.5	50.3	51.4	52.1	54.0	55.9	65.9
Student Effort	43.9	46.1	47.2	48.4	49.5	50.7	51.5	52.3	53.6	55.7	60.7
Academic Challenge	40.8	45.2	46.1	48.0	49.3	50.5	51.0	52.1	53.0	53.9	59.7
Student - Faculty Interaction	43.6	46.5	48.0	49.0	49.8	50.4	51.3	52.2	54.3	56.1	64.5
Support for Learners	44.1	46.6	48.0	48.8	50.6	52.1	53.3	54.4	55.7	56.6	61.3
<b>Medium Colleges</b>											
Active and Collaborative Learning	43.8	44.4	45.8	47.2	48.2	48.6	49.3	50.6	51.6	53.7	59.1
Student Effort	44.9	46.8	47.3	48.4	49.1	49.9	50.6	50.9	52.5	53.8	59.8
Academic Challenge	45.4	46.3	47.0	48.5	48.9	49.4	49.9	50.9	51.6	53.0	55.6
Student - Faculty Interaction	43.4	46.0	46.6	47.6	48.2	48.8	50.3	51.1	51.4	53.5	54.9
Support for Learners	42.3	44.9	45.8	47.5	48.4	49.4	50.2	52.0	53.4	55.2	62.4
<b>Large Colleges</b>											
Active and Collaborative Learning	43.6	44.0	45.6	47.4	48.5	49.6	50.1	50.8	51.6	52.4	54.1
Student Effort	44.6	45.1	45.7	46.6	48.0	49.4	50.0	50.5	50.9	52.8	58.3
Academic Challenge	43.9	47.5	47.9	48.3	48.7	49.2	49.7	50.6	51.5	53.5	55.7
Student - Faculty Interaction	43.4	45.1	46.6	48.3	48.5	49.2	49.8	51.0	51.5	53.5	56.0
Support for Learners	41.5	44.7	46.1	46.6	47.0	47.7	49.1	50.0	51.3	55.5	56.4
<b>Extra Large Colleges</b>											
Active and Collaborative Learning	43.8	46.2	46.9	47.3	48.1	48.4	50.4	50.5	50.9	52.2	53.2
Student Effort	44.3	47.9	48.1	49.5	50.0	51.4	51.7	52.0	52.3	53.5	54.8
Academic Challenge	45.6	47.6	48.5	48.8	49.0	49.1	50.2	51.5	53.0	54.0	54.1
Student - Faculty Interaction	45.3	45.6	48.6	48.8	48.9	49.0	49.5	51.0	51.9	53.1	53.3
Support for Learners	46.8	47.0	47.9	48.7	49.0	49.6	50.0	50.1	51.1	53.5	55.2
<b>Urban Colleges</b>											
Active and Collaborative Learning	43.8	45.6	47.2	48.0	48.4	49.5	50.3	51.0	51.8	53.4	56.0
Student Effort	44.2	46.1	47.8	49.0	50.0	51.0	51.5	52.0	52.4	54.0	58.3
Academic Challenge	45.2	45.8	47.3	48.1	49.0	49.3	50.4	51.4	52.8	53.7	54.8
Student - Faculty Interaction	44.7	46.0	47.2	48.3	48.7	49.0	49.8	51.1	51.6	53.5	56.1
Support for Learners	44.4	45.4	47.4	48.6	49.4	50.0	51.0	52.1	53.8	55.2	62.4
<b>Suburban Colleges</b>											
Active and Collaborative Learning	43.6	44.4	46.1	46.7	48.4	49.1	50.5	51.5	52.4	55.2	65.9
Student Effort	44.6	46.3	47.6	48.0	49.0	49.5	50.2	51.0	52.8	54.7	60.7
Academic Challenge	43.9	47.6	48.6	48.8	49.4	49.9	50.6	51.2	52.2	55.1	58.1
Student - Faculty Interaction	43.4	46.7	48.1	48.4	48.9	49.9	51.0	51.5	51.9	54.3	56.7
Support for Learners	41.5	46.1	46.4	47.7	48.4	49.5	50.4	52.0	55.0	55.6	59.3
<b>Rural Colleges</b>											
Active and Collaborative Learning	44.6	45.3	47.2	48.4	48.8	49.9	50.8	51.5	53.0	55.5	61.5
Student Effort	43.9	46.1	46.6	48.3	48.7	50.1	51.0	51.9	53.1	56.0	59.8
Academic Challenge	40.8	44.6	45.9	47.9	48.5	49.7	50.5	51.4	52.5	53.5	59.7
Student - Faculty Interaction	43.4	46.1	47.6	48.7	49.7	50.2	51.1	51.7	54.0	55.4	64.5

Support for Learners

42.3 46.5 47.3 48.2 48.9 50.8 52.5 53.3 54.2 56.2 61.3

**Active and Collaborative Learning  
Bar Charts and Benchmark Item Composition  
All Students**

Description - Students learn more when they are actively involved in their education and have opportunities to think about and apply what they are learning in different settings. Through collaborating with others to solve problems or master challenging content, students develop valuable skills that prepare them to deal with the kinds of situations and problems they will encounter in the workplace, the community, and their personal lives.

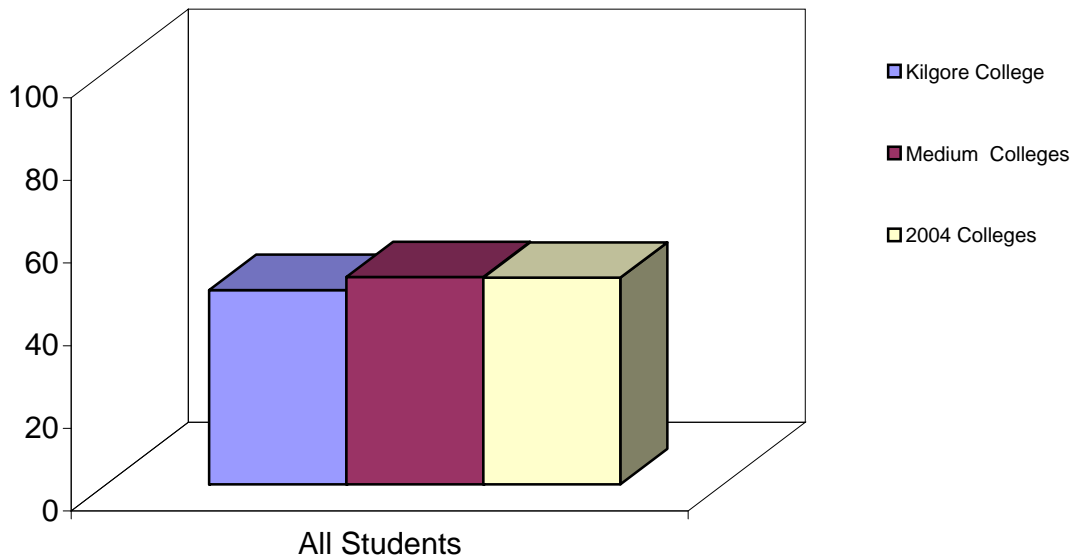


Benchmark Scores			
	Kilgore College	Medium Colleges	2004 Colleges
<b>All Students</b>	46.8	49.0	50.0

<b>Active and Collaborative Learning</b>	
4a.	Asked questions in class or contributed to class discussions
4b.	Made a class presentation
4f.	Worked with other students on projects during class
4g.	Worked with classmates outside of class to prepare class assignments
4h.	Tutored or taught other students (paid or voluntary)
4i.	Participated in a community-based project as a part of a regular course
4r.	Discussed ideas from your readings or classes with others outside of class (students, family members, co-workers, etc.)

**Student Effort**  
**Bar Charts and Benchmark Item Composition**  
**All Students**

Description - Students' own behaviors contribute significantly to their learning and the likelihood that they will successfully attain their educational goals.

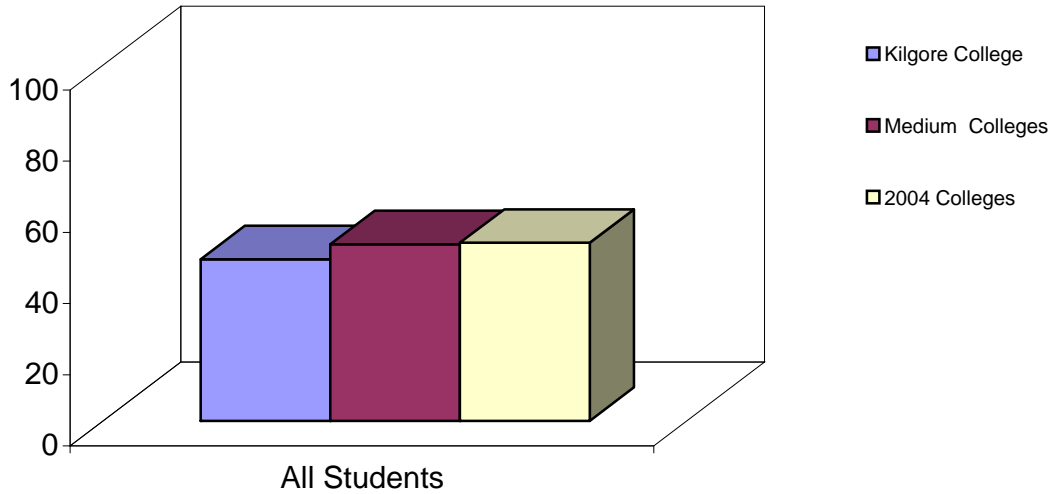


Benchmark Scores			
	Kilgore College	Medium Colleges	2004 Colleges
<b>All Students</b>	47.0	50.2	50.0

- Student Effort**
- 4c. Prepared two or more drafts of a paper or assignment before turning it in
  - 4d. Worked on a paper or project that required integrating ideas or information from various sources
  - 4e. Come to class without completing readings or assignments
  - 6b. Number of books read on your own (not assigned) for personal enjoyment or academic enrichment
  - 10a. Preparing for class (studying, reading, writing, rehearsing, doing homework, or other activities related to your program)
  - 13d. Frequency of use: Peer or other tutoring
  - 13e. Frequency of use: Skill labs
  - 13h. Frequency of use: Computer lab

**Academic Challenge**  
**Bar Charts and Benchmark Item Composition**  
**All Students**

Description - Challenging intellectual and creative work is central to student learning and collegiate quality. Ten survey items address the nature and amount of assigned academic work, the complexity of cognitive tasks presented to students, and the standards faculty members use to evaluate student performance.

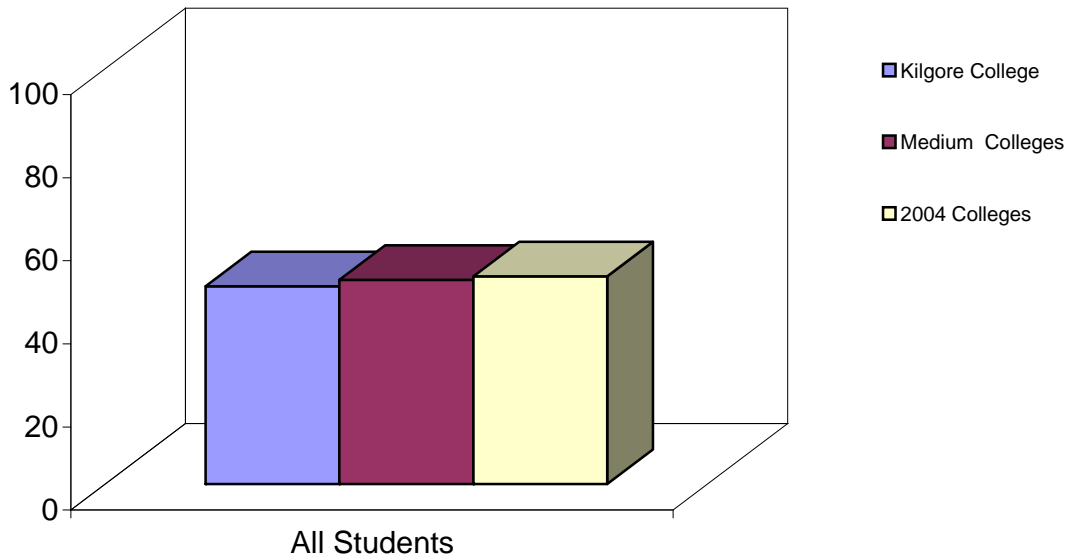


Benchmark Scores			
	Kilgore College	Medium Colleges	2004 Colleges
<b>All Students</b>	45.4	49.6	50.0

- Academic Challenge**
- 4p. Worked harder than you thought you could to meet an instructor's standards or expectations
  - 5b. Analyzing the basic elements of an idea, experience, or theory
  - 5c. Synthesizing and organizing ideas, information, or experiences in new ways
  - 5d. Making judgments about the value or soundness of information, arguments, or methods
  - 5e. Applying theories or concepts to practical problems or in new situations
  - 5f. Using information you have read or heard to perform a new skill
  - 6a. Number of assigned textbooks, manuals, books, or book-length packs of course readings
  - 6c. Number of written papers or reports of any length
  - 7. Mark the box that best represents the extent to which your examinations during the current school year have challenged you to do your best work at this college
  - 9a. Encouraging you to spend significant amounts of time studying

**Student-Faculty Interaction  
Bar Charts and Benchmark Item Composition  
All Students**

Description - In general, the more contact students have with their teachers, the more likely they are to learn effectively and persist toward achievement of their educational goals. Through such interactions, faculty members become role models, mentors, and guides for continuous, lifelong learning.

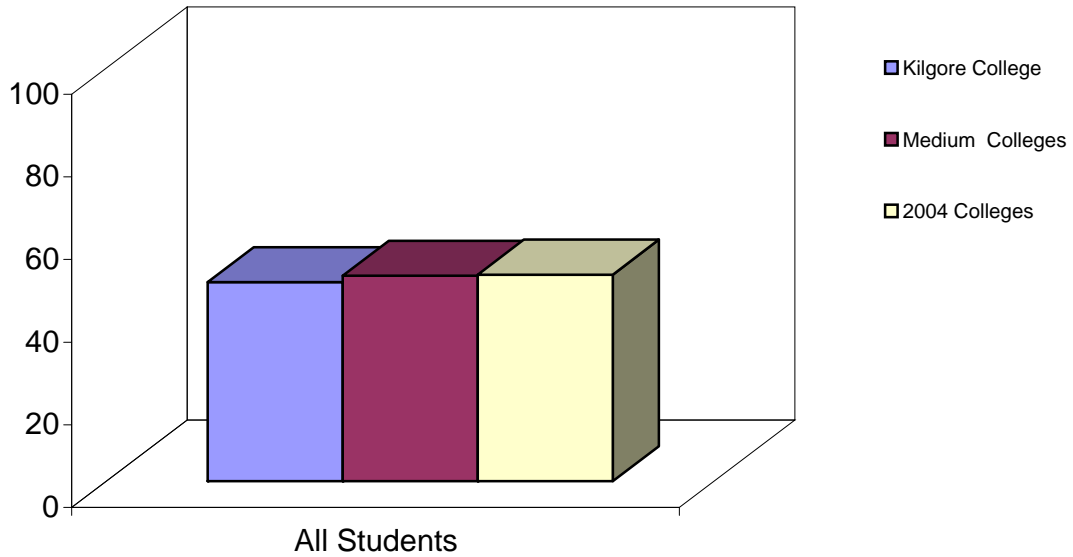


Benchmark Scores			
	Kilgore College	Medium Colleges	2004 Colleges
<b>All Students</b>	47.6	49.2	50.0

Student-Faculty Interaction	
4k.	Used email to communicate with an instructor
4l.	Discussed grades or assignments with an instructor
4m.	Talked about career plans with an instructor or advisor
4n.	Discussed ideas from your readings or classes with instructors outside of class
4o.	Received prompt feedback (written or oral) from instructors on your performance
4q.	Worked with instructors on activities other than coursework

**Support for Learners  
Bar Charts and Benchmark Item Composition  
All Students**

Description - Students perform better and are more satisfied at colleges that are committed to their success and cultivate positive working and social relationships among different groups on campus.



Benchmark Scores			
	Kilgore College	Medium Colleges	2004 Colleges
<b>All Students</b>	48.2	49.7	50.0

<b>Support for Learners</b>	
9b.	Providing the support you need to help you succeed at this college
9c.	Encouraging contact among students from different economic, social, and racial or ethnic backgrounds
9d.	Helping you cope with your non-academic responsibilities (work, family, etc.)
9e.	Providing the support you need to thrive socially
9f.	Providing the financial support you need to afford your education
13a.	Frequency: Academic advising/planning
13b.	Frequency: Career Counseling

Community College Survey of Student Engagement  
2004 Benchmark Summary Table - Enrollment Status Breakout  
**Kilgore College**

Part-Time Students				
Benchmark	Kilgore College	Comparison Group Statistics		
			Medium Colleges	2004 Colleges
<b>Active and Collaborative Learning</b>	38.9	Benchmark Score	45.3	45.9
		Score Difference	-6.4	-7.0
<b>Student Effort</b>	41.2	Benchmark Score	46.9	46.8
		Score Difference	-5.6	-5.5
<b>Academic Challenge</b>	39.1	Benchmark Score	46.2	46.1
		Score Difference	-7.1	-7.0
<b>Student-Faculty Interaction</b>	41.8	Benchmark Score	45.7	46.5
		Score Difference	-3.9	-4.7
<b>Support for Learners</b>	44.0	Benchmark Score	47.5	48.1
		Score Difference	-3.6	-4.2
		Number of Colleges	35	152

Full-Time Students				
Benchmark	Kilgore College	Comparison Group Statistics		
			Medium Colleges	2004 Colleges
<b>Active and Collaborative Learning</b>	53.4	Benchmark Score	55.5	56.1
		Score Difference	-2.1	-2.7
<b>Student Effort</b>	51.9	Benchmark Score	56.0	55.9
		Score Difference	-4.1	-3.9
<b>Academic Challenge</b>	50.7	Benchmark Score	55.4	55.8
		Score Difference	-4.6	-5.1
<b>Student-Faculty Interaction</b>	52.5	Benchmark Score	55.4	56.0
		Score Difference	-2.9	-3.5
<b>Support for Learners</b>	51.8	Benchmark Score	53.5	54.5
		Score Difference	-1.7	-2.7
		Number of Colleges	35	152

**Benchmark Score:** Each benchmark score was computed by averaging the scores on survey items that comprise that benchmark. To compensate for disproportionately large numbers of full-time students in the sample, all means used in the creation of the benchmarks are weighted by full- and part-time status. Benchmark scores are standardized so that the weighted mean across all students is 50 and the standard deviation across all participating students is 25. Institutions' benchmark scores are computed by taking the weighted average of their students' standardized scores.

**Score Difference:** The result of subtracting the comparison group score (same size colleges or 2004 colleges) from your college's score on each benchmark.

## 2004 CCSSE Benchmark Deciles

### Enrollment Status Breakout

### Kilgore College

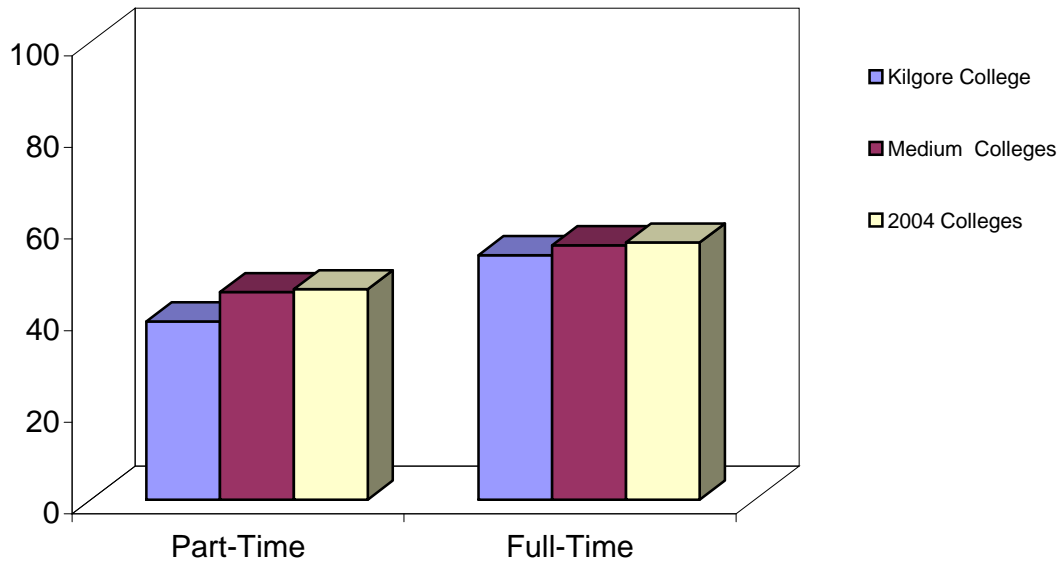
These tables present the range of institutional scores by decile for the five benchmarks of effective educational practice for both part-time and full-time students. Deciles are percentile scores that divide the frequency of benchmark scores into ten equal groups. Deciles are listed for the entire 2004 participating group of colleges and for each appropriate breakdown according to college size and college urbanicity. A percentile represents the point at or below which a specified percentage of the college benchmark scores fall. For example, the 60th percentile represents the point at or below which 60 percent of the college benchmark scores fall for the respective comparison group. To help you gauge your college's performance relative to the comparison groups, the shaded areas on the national, size, or urbanicity tables indicate the deciles that are less than or equal to your benchmark score.

	Part-Time Students										Full-Time Students											
	0%	10%	20%	30%	40%	50%	60%	70%	80%	90%	100%	0%	10%	20%	30%	40%	50%	60%	70%	80%	90%	100%
<b>All 2004 Colleges</b>																						
Active and Collaborative Learning	35.7	41.2	42.5	43.8	44.5	46.0	47.0	48.0	49.1	50.4	62.4	46.0	51.0	52.2	53.6	54.5	56.4	57.1	58.0	59.3	60.6	69.4
Student Effort	37.5	42.3	43.6	44.7	45.7	46.9	47.7	48.7	49.9	51.3	58.9	48.4	51.4	52.5	53.3	54.7	55.7	56.9	57.6	58.7	60.7	65.2
Academic Challenge	34.5	41.9	43.2	44.4	45.4	46.0	47.0	47.7	49.3	50.9	55.8	42.0	52.0	53.5	54.2	54.9	55.7	56.7	57.3	58.2	60.0	63.8
Student - Faculty Interaction	34.4	42.1	43.5	45.0	45.8	46.4	47.1	47.9	48.9	50.9	56.3	47.9	51.2	53.3	54.4	55.1	56.0	56.9	57.9	58.7	59.8	68.6
Support for Learners	38.4	42.9	44.5	45.7	46.6	48.0	48.9	50.1	51.8	54.0	62.5	45.0	48.8	50.4	52.2	53.5	54.4	55.4	56.7	57.7	60.0	65.3
<b>Small Colleges</b>																						
Active and Collaborative Learning	35.7	41.1	43.3	43.8	45.0	46.6	47.9	48.8	50.0	51.4	62.4	49.8	51.1	52.3	53.8	55.0	56.9	57.9	58.9	60.3	62.3	69.4
Student Effort	37.5	41.7	43.8	45.0	45.9	47.0	47.9	49.6	50.4	51.9	58.9	48.7	50.8	52.4	53.2	54.4	55.4	56.7	57.7	59.8	61.3	65.2
Academic Challenge	34.5	41.0	42.9	43.5	44.8	45.6	47.0	48.0	48.9	51.3	55.8	42.0	51.1	53.1	53.8	54.7	55.9	56.7	57.7	58.6	61.0	63.8
Student - Faculty Interaction	34.4	41.9	44.4	45.4	46.2	46.6	47.6	48.4	49.9	51.6	56.3	47.9	51.9	54.4	55.1	55.7	56.4	57.8	58.6	59.4	60.7	68.6
Support for Learners	39.8	42.6	44.7	46.6	48.2	48.8	50.4	51.8	53.3	54.5	58.6	45.0	49.4	51.7	53.7	55.0	56.0	57.1	57.4	59.3	63.2	65.3
<b>Medium Colleges</b>																						
Active and Collaborative Learning	38.9	41.0	41.5	42.5	43.1	45.5	46.6	47.6	48.0	49.9	54.1	48.4	50.3	52.3	52.9	54.1	54.4	56.2	57.4	59.3	60.5	66.5
Student Effort	41.0	43.3	43.8	44.2	45.1	46.3	47.4	48.1	50.1	50.4	55.3	48.7	51.9	52.8	53.8	54.9	55.7	56.8	57.7	58.6	60.7	64.5
Academic Challenge	39.1	42.2	42.6	44.0	45.5	46.3	46.8	47.7	50.1	50.7	53.9	50.7	52.5	53.5	54.2	54.7	55.1	56.4	57.0	57.3	57.6	60.2
Student - Faculty Interaction	39.8	42.3	43.4	43.7	44.7	45.1	46.6	47.7	48.0	48.9	51.5	49.4	50.2	52.2	53.4	54.7	56.2	56.8	57.0	58.3	59.2	62.8
Support for Learners	38.5	42.5	43.7	45.0	45.9	48.0	48.3	49.1	50.9	52.8	62.5	45.7	47.3	50.1	51.2	52.5	53.4	54.3	55.9	57.0	58.2	62.3
<b>Large Colleges</b>																						
Active and Collaborative Learning	40.8	41.4	41.8	43.8	44.9	45.6	46.3	46.7	48.2	48.8	51.0	46.0	51.0	52.0	53.7	54.8	55.9	56.6	57.2	58.0	59.3	60.3
Student Effort	41.6	42.3	42.5	42.9	44.0	44.9	46.8	47.3	48.7	50.5	56.3	48.4	50.4	51.8	52.8	53.2	55.4	55.7	56.3	57.2	58.2	63.2
Academic Challenge	41.0	42.3	44.3	44.7	45.7	45.8	46.4	47.2	47.6	49.5	53.1	50.8	52.8	53.5	54.8	55.4	55.8	56.7	56.9	57.4	60.0	60.2
Student - Faculty Interaction	41.4	41.6	43.3	44.3	45.6	46.1	47.0	47.4	48.7	49.7	53.9	48.8	51.0	51.9	52.7	54.1	55.0	55.7	56.9	57.8	58.6	59.8
Support for Learners	38.4	42.3	43.9	44.6	45.6	46.1	46.9	48.7	49.8	51.4	54.4	46.1	47.2	48.5	49.2	50.0	51.3	53.0	54.1	54.9	56.8	63.2
<b>Extra Large Colleges</b>																						
Active and Collaborative Learning	40.0	41.3	44.1	45.0	45.0	45.3	47.2	47.6	47.9	49.1	50.2	50.4	51.0	53.1	54.5	54.9	56.5	57.1	57.7	58.0	58.5	59.6
Student Effort	41.0	43.2	45.5	46.1	46.4	48.1	48.5	48.7	49.5	50.1	50.7	51.6	52.0	54.7	56.9	56.9	57.2	58.2	58.3	59.4	62.2	62.7
Academic Challenge	41.8	44.8	45.4	45.5	46.0	46.3	47.7	48.3	49.5	50.0	51.2	53.6	53.7	54.1	54.5	55.2	56.3	56.9	57.3	58.7	61.8	62.5
Student - Faculty Interaction	42.2	42.4	45.6	46.1	46.2	46.5	47.0	47.5	48.1	50.6	51.7	51.1	51.4	53.4	54.1	54.8	55.7	56.5	56.9	57.6	59.1	60.1
Support for Learners	44.7	45.4	45.8	46.3	46.4	47.5	47.9	48.0	48.9	49.8	53.3	49.3	51.4	52.3	53.0	53.4	53.8	54.2	54.4	55.5	58.8	62.0
<b>Urban Colleges</b>																						
Active and Collaborative Learning	40.0	42.0	43.2	44.1	45.0	46.8	47.3	47.8	48.0	49.2	53.2	50.4	51.0	51.8	53.8	54.4	55.5	56.9	57.7	58.3	59.5	64.2
Student Effort	37.5	41.8	44.4	46.0	47.0	47.9	48.3	49.1	49.9	50.6	56.3	48.7	51.8	53.4	55.3	56.3	56.9	57.4	58.1	58.6	60.4	62.2
Academic Challenge	36.7	42.2	43.0	44.9	45.4	46.2	47.2	48.0	49.7	50.9	53.9	48.1	53.5	54.0	54.3	54.6	55.4	56.1	57.1	57.5	58.6	61.8
Student - Faculty Interaction	41.1	42.6	43.8	45.3	45.9	46.2	46.9	47.3	48.1	50.4	51.7	50.0	51.2	52.7	53.7	54.6	55.8	56.7	57.7	58.6	59.5	60.9
Support for Learners	41.2	43.2	45.7	46.3	47.4	48.0	48.8	49.8	51.3	52.7	62.5	47.3	50.1	52.3	53.0	53.7	54.5	55.4	55.8	57.6	60.5	63.8
<b>Suburban Colleges</b>																						
Active and Collaborative Learning	39.7	41.3	42.0	43.8	45.2	45.9	46.7	48.6	49.7	50.6	62.4	46.0	50.2	52.0	53.1	54.3	55.7	56.9	57.9	59.2	60.2	69.4
Student Effort	41.6	42.9	44.2	44.9	45.5	46.3	47.3	48.3	49.9	51.3	58.9	48.4	51.7	52.8	53.2	53.9	55.4	57.0	57.5	58.3	60.7	65.2
Academic Challenge	41.0	44.1	45.1	45.6	45.8	46.4	47.0	47.6	48.8	51.3	54.4	50.8	53.2	53.8	54.9	55.9	56.7	56.9	57.4	58.7	60.2	63.1
Student - Faculty Interaction	41.4	43.4	44.5	45.4	46.2	46.8	47.6	48.1	48.9	50.9	55.7	48.8	51.4	53.3	54.9	55.6	55.8	56.5	57.0	57.9	58.4	62.8
Support for Learners	38.4	43.6	44.0	45.6	46.6	48.1	49.0	49.8	52.8	54.1	55.4	46.1	48.5	49.6	51.1	52.8	53.5	54.6	56.7	58.0	59.4	64.5
<b>Rural Colleges</b>																						
Active and Collaborative Learning	35.7	39.7	41.7	43.4	44.3	45.8	46.6	48.2	49.2	51.0	56.2	49.9	51.8	53.0	54.0	55.1	56.7	57.4	58.2	60.1	62.1	68.7
Student Effort	38.9	41.7	43.1	43.8	45.0	45.8	47.1	48.3	50.1	51.4	55.1	48.7	50.4	52.2	52.9	54.6	55.3	56.0	56.7	59.8	60.9	64.8
Academic Challenge	34.5	40.2	42.4	43.3	43.6	45.0	46.4	47.9	48.8	50.2	55.8	42.0	51.1	52.4	53.4	54.4	55.2	56.1	57.1	58.2	59.9	63.8

Student - Faculty Interaction	34.4	40.8	42.8	44.2	45.2	46.3	47.2	47.9	49.2	51.5	56.3	47.9	51.3	53.5	54.7	55.1	56.3	57.2	58.7	59.7	61.9	68.6
Support for Learners	38.5	42.1	44.0	45.6	46.1	48.0	48.8	50.7	52.5	54.5	58.6	45.0	48.9	50.4	52.1	54.3	54.8	56.0	57.2	57.4	60.2	65.3

**Active and Collaborative Learning  
Bar Charts and Benchmark Item Composition  
Enrollment Status Breakout**

Description - Students learn more when they are actively involved in their education and have opportunities to think about and apply what they are learning in different settings. Through collaborating with others to solve problems or master challenging content, students develop valuable skills that prepare them to deal with the kinds of situations and problems they will encounter in the workplace, the community, and their personal lives.



Benchmark Scores

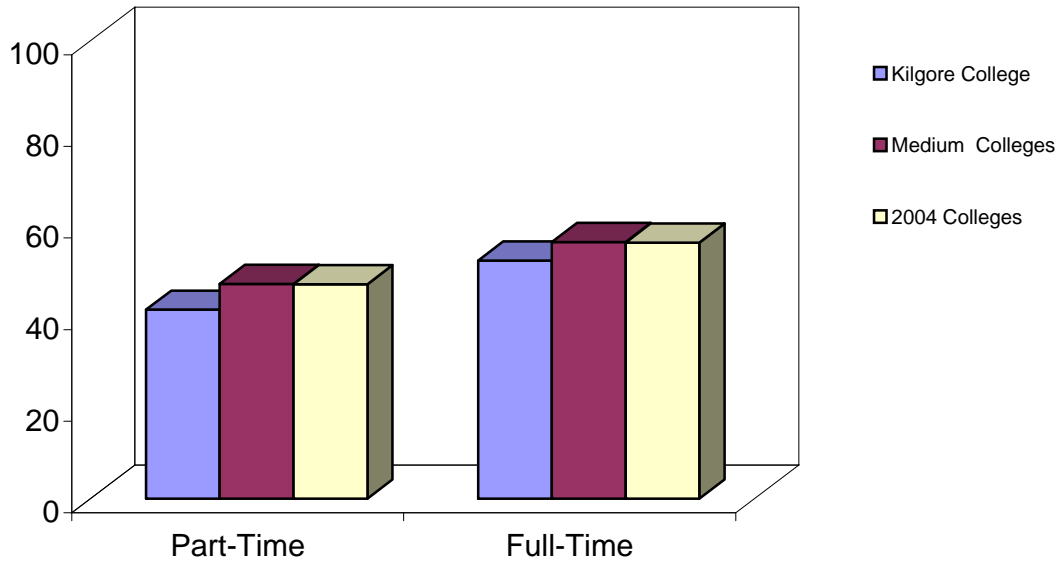
	Kilgore College	Medium Colleges	2004 Colleges
<b>Part-Time</b>	38.9	45.3	45.9
<b>Full-Time</b>	53.4	55.5	56.1

**Active and Collaborative Learning**

- 4a. Asked questions in class or contributed to class discussions
- 4b. Made a class presentation
- 4f. Worked with other students on projects during class
- 4g. Worked with classmates outside of class to prepare class assignments
- 4h. Tutored or taught other students (paid or voluntary)
- 4i. Participated in a community-based project as a part of a regular course
- 4r. Discussed ideas from your readings or classes with others outside of class (students, family members, co-workers, etc.)

**Student Effort**  
**Bar Charts and Benchmark Item Composition**  
**Enrollment Status Breakout**

Description - Students' own behaviors contribute significantly to their learning and the likelihood that they will successfully attain their educational goals.



Benchmark Scores

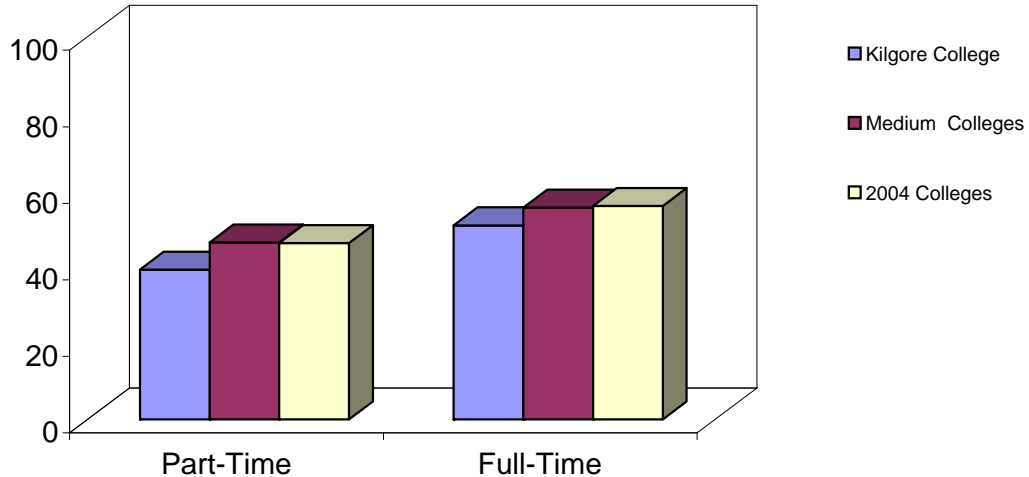
	Kilgore College	Medium Colleges	2004 Colleges
<b>Part-Time</b>	41.2	46.9	46.8
<b>Full-Time</b>	51.9	56.0	55.9

**Student Effort**

- 4c. Prepared two or more drafts of a paper or assignment before turning it in
- 4d. Worked on a paper or project that required integrating ideas or information from various sources
- 4e. Come to class without completing readings or assignments
- 6b. Number of books read on your own (not assigned) for personal enjoyment or academic enrichment
- 10a. Preparing for class (studying, reading, writing, rehearsing, doing homework, or other activities related to your program)
- 13d. Frequency of use: Peer or other tutoring
- 13e. Frequency of use: Skill labs
- 13h. Frequency of use: Computer lab

**Academic Challenge  
Bar Charts and Benchmark Item Composition  
Enrollment Status Breakout**

Description - Challenging intellectual and creative work is central to student learning and collegiate quality. Ten survey items address the nature and amount of assigned academic work, the complexity of cognitive tasks presented to students, and the standards faculty members use to evaluate student performance.



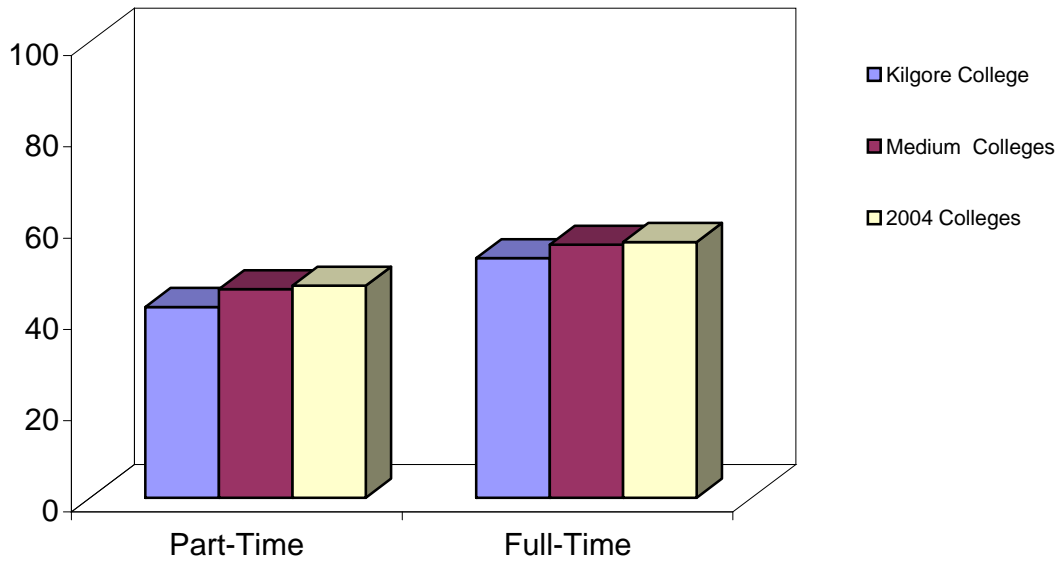
Benchmark Scores

	Kilgore College	Medium Colleges	2004 Colleges
<b>Part-Time</b>	39.1	46.2	46.1
<b>Full-Time</b>	50.7	55.4	55.8

<b>Academic Challenge</b>	
4p.	Worked harder than you thought you could to meet an instructor's standards or expectations
5b.	Analyzing the basic elements of an idea, experience, or theory
5c.	Synthesizing and organizing ideas, information, or experiences in new ways
5d.	Making judgments about the value or soundness of information, arguments, or methods
5e.	Applying theories or concepts to practical problems or in new situations
5f.	Using information you have read or heard to perform a new skill
6a.	Number of assigned textbooks, manuals, books, or book-length packs of course readings
6c.	Number of written papers or reports of any length
7	Mark the box that best represents the extent to which your examinations during the current school year have challenged you to do your best work at this college
9a.	Encouraging you to spend significant amounts of time studying

**Student-Faculty Interaction  
Bar Charts and Benchmark Item Composition  
Enrollment Status Breakout**

Description - In general, the more contact students have with their teachers, the more likely they are to learn effectively and persist toward achievement of their educational goals. Through such interactions, faculty members become role models, mentors, and guides for continuous, lifelong learning.



Benchmark Scores

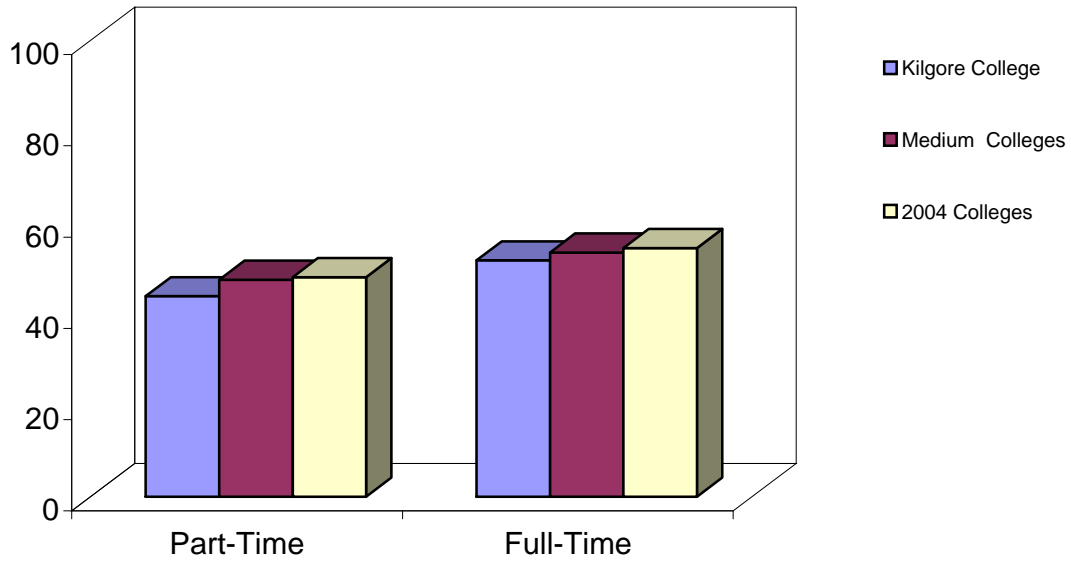
	Kilgore College	Medium Colleges	2004 Colleges
<b>Part-Time</b>	41.8	45.7	46.5
<b>Full-Time</b>	52.5	55.4	56.0

**Student-Faculty Interaction**

- 4k. Used email to communicate with an instructor
- 4l. Discussed grades or assignments with an instructor
- 4m. Talked about career plans with an instructor or advisor
- 4n. Discussed ideas from your readings or classes with instructors outside of class
- 4o. Received prompt feedback (written or oral) from instructors on your performance
- 4q. Worked with instructors on activities other than coursework

**Support for Learners  
Bar Charts and Benchmark Item Composition  
Enrollment Status Breakout**

Description - Students perform better and are more satisfied at colleges that are committed to their success and cultivate positive working and social relationships among different groups on campus.




---

**Benchmark Scores**

---

	<b>Kilgore College</b>	<b>Medium Colleges</b>	<b>2004 Colleges</b>
<b>Part-Time</b>	44.0	47.5	48.1
<b>Full-Time</b>	51.8	53.5	54.5

<b>Support for Learners</b>	
9b.	Providing the support you need to help you succeed at this college
9c.	Encouraging contact among students from different economic, social, and racial or ethnic backgrounds
9d.	Helping you cope with your non-academic responsibilities (work, family, etc.)
9e.	Providing the support you need to thrive socially
9f.	Providing the financial support you need to afford your education
13a.	Frequency: Academic advising/planning
13b.	Frequency: Career Counseling

Community College Survey of Student Engagement  
2004 Benchmark Summary Table - Credit Hour Status Breakout  
**Kilgore College**

0 to 29 Credits				
Benchmark	Kilgore College	Comparison Group Statistics		
			Medium Colleges	2004 Colleges
<b>Active and Collaborative Learning</b>	43.7	Benchmark Score	46.6	47.2
		Score Difference	-3.0	-3.6
<b>Student Effort</b>	46.6	Benchmark Score	49.2	49.2
		Score Difference	-2.5	-2.5
<b>Academic Challenge</b>	44.3	Benchmark Score	48.2	48.0
		Score Difference	-3.9	-3.8
<b>Student-Faculty Interaction</b>	45.1	Benchmark Score	47.1	47.6
		Score Difference	-2.0	-2.5
<b>Support for Learners</b>	48.1	Benchmark Score	49.0	49.8
		Score Difference	-0.9	-1.8
		Number of Colleges	35	152

30+ Credits				
Benchmark	Kilgore College	Comparison Group Statistics		
			Medium Colleges	2004 Colleges
<b>Active and Collaborative Learning</b>	53.6	Benchmark Score	54.6	55.4
		Score Difference	-1.0	-1.8
<b>Student Effort</b>	47.7	Benchmark Score	52.3	52.4
		Score Difference	-4.6	-4.7
<b>Academic Challenge</b>	48.0	Benchmark Score	53.0	53.6
		Score Difference	-5.0	-5.6
<b>Student-Faculty Interaction</b>	53.1	Benchmark Score	54.1	55.5
		Score Difference	-1.0	-2.4
<b>Support for Learners</b>	48.5	Benchmark Score	51.1	52.0
		Score Difference	-2.6	-3.6
		Number of Colleges	35	152

**Benchmark Score:** Each benchmark score was computed by averaging the scores on survey items that comprise that benchmark. To compensate for disproportionately large numbers of full-time students in the sample, all means used in the creation of the benchmarks are weighted by full- and part-time status. Benchmark scores are standardized so that the weighted mean across all students is 50 and the standard deviation across all participating students is 25. Institutions' benchmark scores are computed by taking the weighted average of their students' standardized scores.

**Score Difference:** The result of subtracting the comparison group score (same size colleges or 2004 colleges) from your college's score on each benchmark.

## 2004 CCSSE Benchmark Deciles

### Credit Hour Status Breakout

### Kilgore College

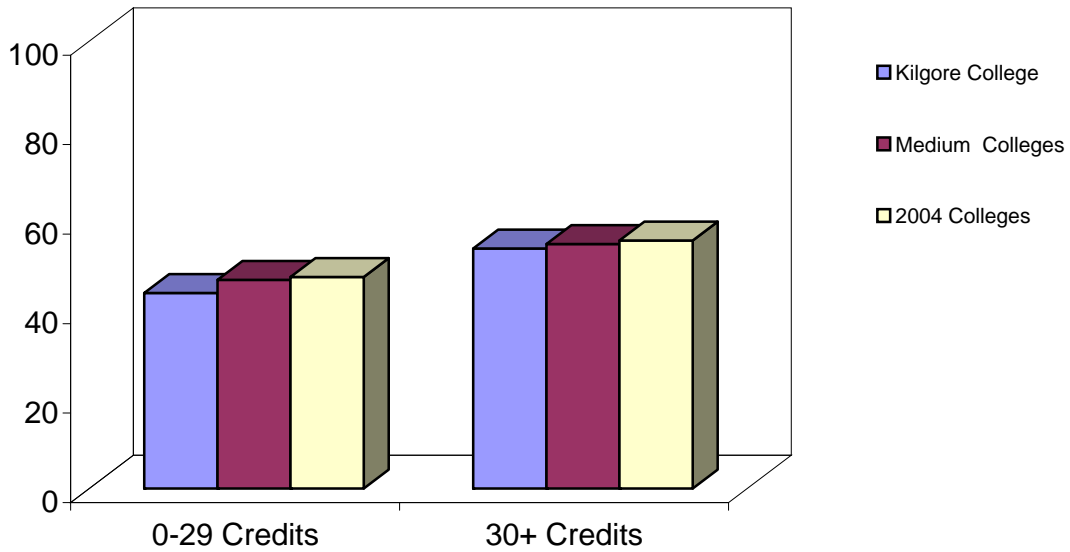
These tables present the range of institutional scores by decile for the five benchmarks of effective educational practice for both students with 0 to 29 credits and students with 30 or more credits. Deciles are percentile scores that divide the frequency of benchmark scores into ten equal groups. Deciles are listed for the entire 2004 participating group of colleges and for each appropriate breakdown according to college size and college urbanicity. A percentile represents the point at or below which a specified percentage of the college benchmark scores fall. For example, the 60th percentile represents the point at or below which 60 percent of the college benchmark scores fall for the respective comparison group. To help you gauge your college's performance relative to the comparison groups, the shaded areas on the national, size, or urbanicity tables indicate the deciles that are less than or equal to your benchmark score.

	0 to 29 credits										30 plus credits											
	0%	10%	20%	30%	40%	50%	60%	70%	80%	90%	100%	0%	10%	20%	30%	40%	50%	60%	70%	80%	90%	100%
<b>All 2004 Colleges</b>																						
Active and Collaborative Learning	40.0	42.6	43.7	45.1	45.9	46.7	47.9	49.3	50.1	51.8	63.0	46.9	50.1	51.4	52.6	53.7	54.8	56.4	57.3	59.2	60.9	74.6
Student Effort	40.6	44.4	46.2	47.1	47.8	48.7	49.6	50.8	51.9	54.3	59.4	40.7	47.7	48.8	50.1	51.5	52.6	53.4	54.6	55.8	57.0	62.8
Academic Challenge	39.9	43.6	45.4	46.5	47.3	47.8	48.8	49.7	50.9	52.3	56.1	37.1	49.8	50.8	51.6	52.3	53.3	53.9	55.1	56.3	58.2	66.5
Student - Faculty Interaction	39.9	43.4	45.1	45.7	46.7	47.4	48.4	49.3	50.3	51.7	60.9	47.0	50.9	52.1	53.1	53.9	55.0	55.9	57.1	58.9	60.5	69.7
Support for Learners	39.6	45.1	46.0	47.1	48.2	49.4	50.9	52.1	53.8	55.5	61.3	40.8	46.5	48.0	48.9	50.1	51.5	52.9	54.0	55.9	58.3	66.6
<b>Small Colleges</b>																						
Active and Collaborative Learning	41.5	43.1	44.3	45.3	45.9	47.4	49.1	50.3	51.0	52.7	63.0	46.9	50.5	52.1	53.4	54.7	56.7	57.9	59.2	60.8	62.8	74.6
Student Effort	42.7	44.3	46.8	47.6	48.3	48.8	49.8	51.3	53.2	55.4	59.4	40.7	47.1	48.7	50.1	52.3	53.2	54.4	55.3	56.7	58.7	62.8
Academic Challenge	39.9	42.8	44.5	46.0	47.1	48.0	49.6	50.1	51.3	52.3	56.1	37.1	48.6	51.0	52.0	52.4	53.5	54.0	55.2	57.9	61.0	66.5
Student - Faculty Interaction	39.9	44.2	45.1	45.7	46.7	47.6	48.8	49.3	50.8	52.5	60.9	48.7	51.9	53.4	54.5	55.6	56.3	57.8	59.1	60.4	64.2	69.7
Support for Learners	41.7	45.6	46.6	47.9	49.8	51.6	52.7	53.2	55.0	56.6	60.4	40.8	47.4	49.1	51.3	52.6	53.5	54.4	56.1	57.8	59.1	66.6
<b>Medium Colleges</b>																						
Active and Collaborative Learning	41.1	42.0	42.9	43.7	46.2	46.6	47.5	48.5	49.3	50.9	55.5	48.2	50.5	51.1	52.0	53.1	53.8	54.5	55.6	57.1	60.1	68.8
Student Effort	41.9	45.6	46.5	47.1	47.7	48.8	49.8	50.5	51.7	53.3	59.4	43.9	47.7	49.2	50.0	51.3	52.2	52.6	54.6	55.6	56.6	60.8
Academic Challenge	43.3	44.3	45.5	46.9	47.4	48.0	48.5	49.0	50.5	52.9	55.0	48.0	48.3	50.3	51.1	52.2	53.1	53.5	54.8	55.3	56.9	60.8
Student - Faculty Interaction	41.5	41.9	45.3	45.6	45.9	46.6	48.0	49.1	49.9	51.7	53.0	47.5	50.1	52.0	52.5	53.7	53.9	55.1	55.7	56.6	57.8	59.8
Support for Learners	40.5	43.6	45.4	46.3	47.8	48.7	50.1	50.8	52.6	54.5	61.3	42.8	46.0	47.0	48.2	49.2	50.4	51.1	52.6	54.8	58.6	64.9
<b>Large Colleges</b>																						
Active and Collaborative Learning	40.9	42.6	43.6	43.9	45.8	46.6	47.6	47.9	49.2	50.6	52.1	47.1	48.8	50.8	51.9	52.5	52.9	54.9	56.4	57.5	59.1	60.2
Student Effort	42.5	43.4	45.2	45.6	45.9	47.0	47.7	48.7	50.0	51.7	59.2	46.0	46.8	48.3	49.1	50.2	51.4	52.5	53.3	54.4	55.5	56.6
Academic Challenge	41.7	44.7	45.4	46.6	47.1	47.6	48.5	49.1	49.7	51.5	54.0	48.9	49.1	50.7	51.2	52.1	52.9	55.1	55.6	56.1	57.1	58.2
Student - Faculty Interaction	42.0	42.3	43.7	45.1	46.4	47.5	47.8	48.7	50.1	51.3	52.7	47.0	50.8	51.0	51.3	52.3	52.9	54.4	55.0	56.0	58.2	62.4
Support for Learners	39.6	44.1	45.8	46.1	46.6	46.8	48.0	49.2	50.8	54.7	55.8	43.9	45.8	46.4	47.3	48.1	48.5	49.9	52.3	52.9	55.4	56.9
<b>Extra Large Colleges</b>																						
Active and Collaborative Learning	40.0	41.4	43.9	45.1	45.6	46.2	48.3	48.4	49.3	49.8	50.1	49.3	49.7	50.3	52.8	53.1	54.8	55.3	55.8	56.5	57.1	59.0
Student Effort	40.6	46.5	47.8	48.2	48.4	50.1	50.6	50.7	51.9	52.2	54.3	47.0	48.3	50.5	51.2	52.6	52.9	53.8	53.8	54.6	56.1	56.8
Academic Challenge	41.5	45.9	47.0	47.1	47.6	47.6	47.9	48.0	51.5	52.4	52.7	49.8	50.8	51.4	51.6	51.8	53.7	55.1	55.5	56.3	57.7	62.4
Student - Faculty Interaction	41.8	42.7	47.0	47.2	47.3	47.4	47.7	48.4	50.2	50.4	51.4	49.3	50.3	51.1	52.9	52.9	53.6	54.1	55.3	56.1	58.3	59.1
Support for Learners	45.2	45.8	47.3	48.7	48.9	49.2	50.1	50.2	50.5	54.8	55.0	45.4	47.9	48.5	48.6	49.0	50.2	50.5	51.0	52.1	55.0	55.9
<b>Urban Colleges</b>																						
Active and Collaborative Learning	40.0	43.0	44.1	45.5	46.2	46.8	48.2	48.7	49.8	50.4	54.2	49.3	50.6	51.3	52.9	54.1	54.8	56.0	56.7	57.1	59.5	63.3
Student Effort	40.6	44.4	46.7	47.9	48.3	49.1	50.2	50.9	52.1	53.8	59.2	47.0	49.1	50.0	51.8	52.7	53.3	54.3	54.6	55.2	56.6	59.4
Academic Challenge	41.5	43.6	44.8	46.3	47.4	47.8	48.7	50.1	51.5	52.5	53.7	48.9	50.5	51.2	51.9	52.4	53.3	54.0	55.3	56.1	57.2	60.5
Student - Faculty Interaction	41.8	43.6	45.5	45.9	46.7	47.2	47.6	48.5	50.0	50.4	54.9	49.1	51.0	51.5	52.6	53.6	53.9	55.1	56.3	57.7	58.7	65.7
Support for Learners	43.5	45.4	46.7	47.9	48.7	49.6	50.7	51.4	52.4	55.3	61.3	40.8	46.1	48.1	48.8	50.3	51.1	52.0	53.2	55.7	57.5	64.9
<b>Suburban Colleges</b>																						
Active and Collaborative Learning	40.9	42.3	43.5	43.9	45.3	46.6	47.8	49.1	50.1	52.6	63.0	46.9	49.7	51.3	52.0	52.5	54.2	55.8	57.8	59.6	62.7	74.6
Student Effort	42.5	45.4	46.2	47.1	47.4	47.8	48.8	49.7	51.5	54.3	59.4	46.0	47.8	48.7	49.9	51.4	52.1	53.3	54.9	55.8	56.5	62.8
Academic Challenge	41.7	45.5	46.9	47.2	47.6	48.1	49.0	49.7	50.9	53.1	56.1	48.0	50.4	51.1	52.0	52.4	53.6	54.1	55.1	57.8	60.8	63.7
Student - Faculty Interaction	41.8	44.4	45.6	46.6	46.9	47.6	48.6	49.1	50.4	51.3	52.9	47.0	50.9	52.0	53.5	53.9	54.9	55.5	56.3	58.9	60.4	64.8
Support for Learners	39.6	44.3	46.0	46.6	48.0	49.2	50.2	51.0	53.9	54.9	57.3	42.8	46.0	47.3	48.2	49.7	50.5	52.8	55.0	55.4	58.4	66.6
<b>Rural Colleges</b>																						
Active and Collaborative Learning	41.1	42.9	44.1	45.5	46.0	47.4	47.9	49.6	50.9	52.0	58.1	47.0	49.7	51.9	53.0	54.4	55.2	56.9	58.5	59.3	60.9	65.5
Student Effort	43.5	44.4	45.5	47.0	48.2	48.7	50.0	51.2	52.2	55.4	59.4	40.7	46.0	48.1	49.3	50.7	52.3	52.8	54.1	55.9	58.6	61.3

Academic Challenge	39.9	43.1	44.5	45.9	46.7	47.4	48.0	49.7	50.1	51.8	55.1	37.1	48.0	50.4	51.1	51.7	53.2	53.8	55.1	56.3	58.1	66.5
Student - Faculty Interaction	39.9	43.2	44.6	45.4	45.7	47.5	48.7	49.4	51.0	52.5	60.9	47.8	51.0	52.5	53.7	54.9	55.7	56.4	57.8	59.4	62.0	69.7
Support for Learners	40.5	45.1	46.3	47.1	47.9	50.0	51.6	53.0	53.8	56.0	60.4	44.6	47.1	48.5	49.3	51.0	52.1	53.5	54.5	56.1	58.0	64.8

**Active and Collaborative Learning  
Bar Charts and Benchmark Item Composition  
Credit Hour Status Breakout**

Description - Students learn more when they are actively involved in their education and have opportunities to think about and apply what they are learning in different settings. Through collaborating with others to solve problems or master challenging content, students develop valuable skills that prepare them to deal with the kinds of situations and problems they will encounter in the workplace, the community, and their personal lives.



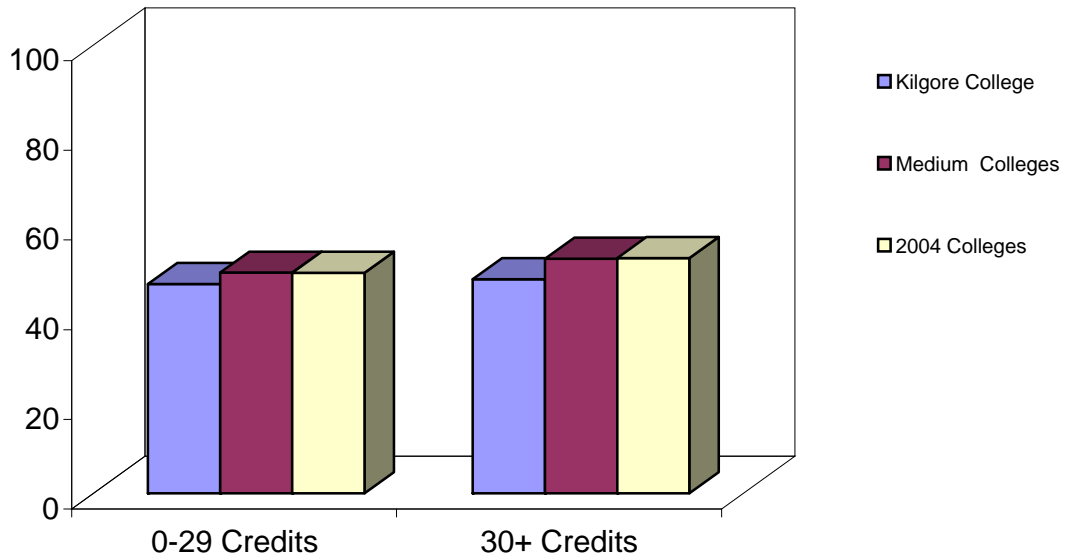
Benchmark Scores

	Kilgore College	Medium Colleges	2004 Colleges
<b>0-29 Credits</b>	43.7	46.6	47.2
<b>30+ Credits</b>	53.6	54.6	55.4

<b>Active and Collaborative Learning</b>	
4a.	Asked questions in class or contributed to class discussions
4b.	Made a class presentation
4f.	Worked with other students on projects during class
4g.	Worked with classmates outside of class to prepare class assignments
4h.	Tutored or taught other students (paid or voluntary)
4i.	Participated in a community-based project as a part of a regular course
4r.	Discussed ideas from your readings or classes with others outside of class (students, family members, co-workers, etc.)

**Student Effort**  
**Bar Charts and Benchmark Item Composition**  
**Credit Hour Status Breakout**

Description - Students' own behaviors contribute significantly to their learning and the likelihood that they will successfully attain their educational goals.



Benchmark Scores

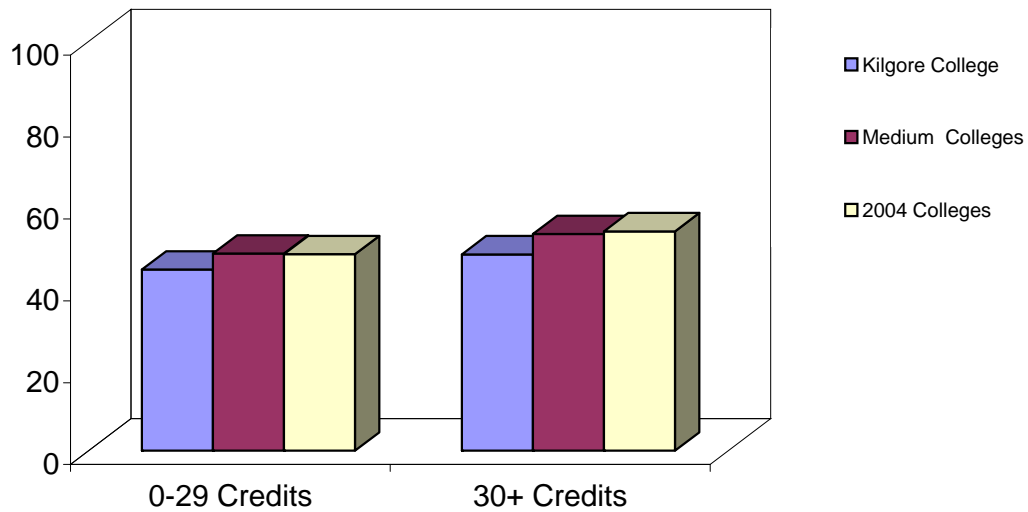
	Kilgore College	Medium Colleges	2004 Colleges
<b>0-29 Credits</b>	46.6	49.2	49.2
<b>30+ Credits</b>	47.7	52.3	52.4

**Student Effort**

- 4c. Prepared two or more drafts of a paper or assignment before turning it in
- 4d. Worked on a paper or project that required integrating ideas or information from various sources
- 4e. Come to class without completing readings or assignments
- 6b. Number of books read on your own (not assigned) for personal enjoyment or academic enrichment
- 10a. Preparing for class (studying, reading, writing, rehearsing, doing homework, or other activities related to your program)
- 13d. Frequency of use: Peer or other tutoring
- 13e. Frequency of use: Skill labs
- 13h. Frequency of use: Computer lab

**Academic Challenge  
Bar Charts and Benchmark Item Composition  
Credit Hour Status Breakout**

Description - Challenging intellectual and creative work is central to student learning and collegiate quality. Ten survey items address the nature and amount of assigned academic work, the complexity of cognitive tasks presented to students, and the standards faculty members use to evaluate student performance.



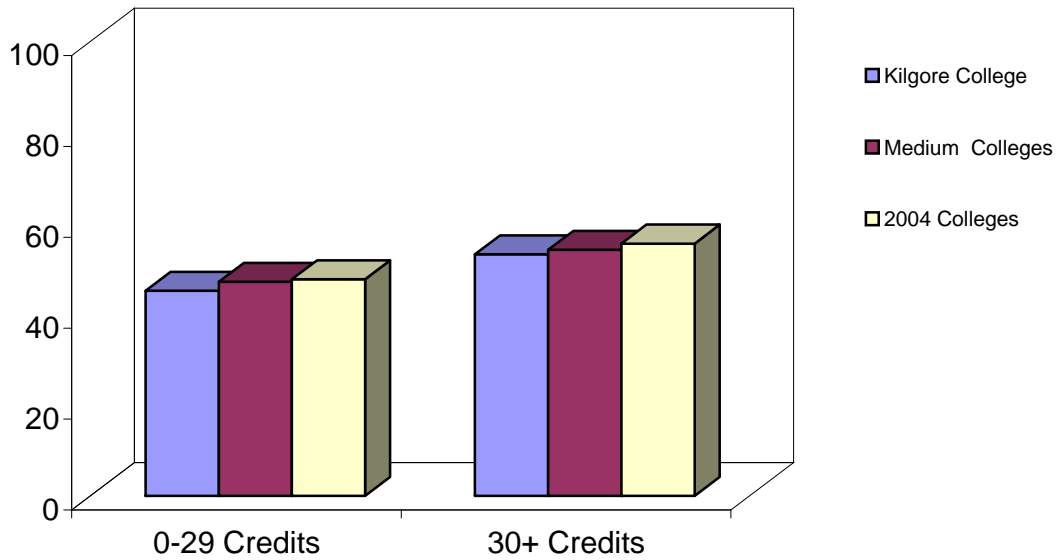
Benchmark Scores

	Kilgore College	Medium Colleges	2004 Colleges
<b>0-29 Credits</b>	44.3	48.2	48.0
<b>30+ Credits</b>	48.0	53.0	53.6

<b>Academic Challenge</b>	
4p.	Worked harder than you thought you could to meet an instructor's standards or expectations
5b.	Analyzing the basic elements of an idea, experience, or theory
5c.	Synthesizing and organizing ideas, information, or experiences in new ways
5d.	Making judgments about the value or soundness of information, arguments, or methods
5e.	Applying theories or concepts to practical problems or in new situations
5f.	Using information you have read or heard to perform a new skill
6a.	Number of assigned textbooks, manuals, books, or book-length packs of course readings
6c.	Number of written papers or reports of any length
7	Mark the box that best represents the extent to which your examinations during the current school year have challenged you to do your best work at this college
9a.	Encouraging you to spend significant amounts of time studying

**Student-Faculty Interaction  
Bar Charts and Benchmark Item Composition  
Credit Hour Status Breakout**

Description - In general, the more contact students have with their teachers, the more likely they are to learn effectively and persist toward achievement of their educational goals. Through such interactions, faculty members become role models, mentors, and guides for continuous, lifelong learning.



Benchmark Scores

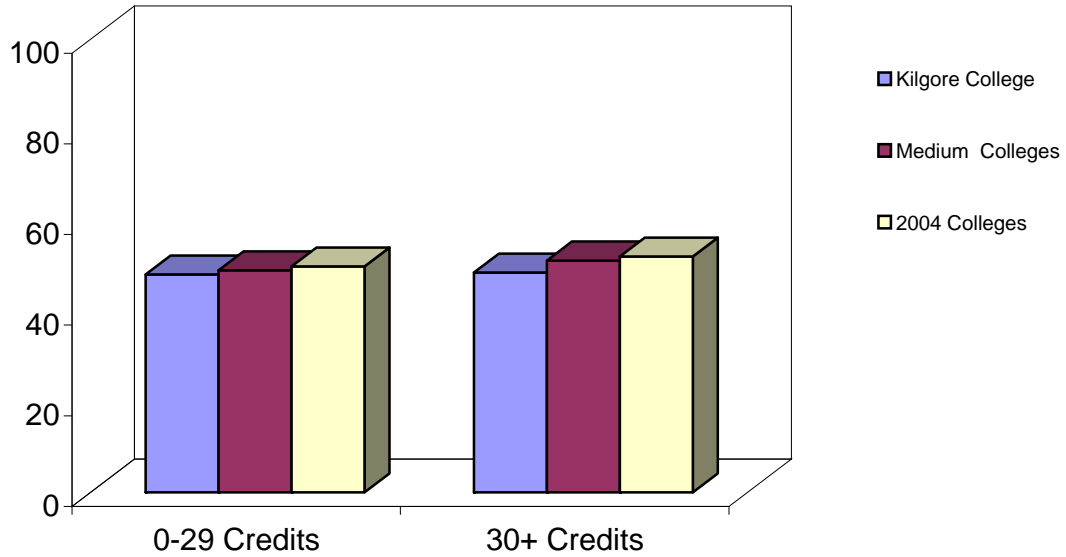
	Kilgore College	Medium Colleges	2004 Colleges
<b>0-29 Credits</b>	45.1	47.1	47.6
<b>30+ Credits</b>	53.1	54.1	55.5

**Student-Faculty Interaction**

- 4k. Used email to communicate with an instructor
- 4l. Discussed grades or assignments with an instructor
- 4m. Talked about career plans with an instructor or advisor
- 4n. Discussed ideas from your readings or classes with instructors outside of class
- 4o. Received prompt feedback (written or oral) from instructors on your performance
- 4q. Worked with instructors on activities other than coursework

**Support for Learners  
Bar Charts and Benchmark Item Composition  
Credit Hour Status Breakout**

Description - Students perform better and are more satisfied at colleges that are committed to their success and cultivate positive working and social relationships among different groups on campus.



**Benchmark Scores**

	<b>Kilgore College</b>	<b>Medium Colleges</b>	<b>2004 Colleges</b>
<b>0-29 Credits</b>	48.1	49.0	49.8
<b>30+ Credits</b>	48.5	51.1	52.0

<b>Support for Learners</b>	
9b.	Providing the support you need to help you succeed at this college
9c.	Encouraging contact among students from different economic, social, and racial or ethnic backgrounds
9d.	Helping you cope with your non-academic responsibilities (work, family, etc.)
9e.	Providing the support you need to thrive socially
9f.	Providing the financial support you need to afford your education
13a.	Frequency: Academic advising/planning
13b.	Frequency: Career Counseling

BMARK

group	IPEDS	_FREQ_	acchall	support	stufac	stueff	actcoll	institution	location
all	22601900	664	45.41365	48.20489	47.607	47.04706	46.75298	Kilgore College	Rural
credit1	22601900	457	44.25495	48.08304	45.11743	46.63491	43.65716	Kilgore College	Rural
credit2	22601900	195	47.97326	48.48708	53.1123	47.72218	53.60925	Kilgore College	Rural
enrlment1	22601900	162	39.11617	43.95087	41.7885	41.24766	38.89553	Kilgore College	Rural
enrlment2	22601900	502	50.71985	51.78929	52.50961	51.93359	53.37361	Kilgore College	Rural
all	22601900	23	47.90499	52.31876	50.07535	48.68319	49.72086	Kilgore College	Rural
all	22601900	35	49.55572	49.72238	49.15354	50.15701	48.9924	Kilgore College	Rural
all	22601900	61	49.36776	50.95843	50.6656	50.30458	50.29436	Kilgore College	Rural
credit1	22601900	23	46.215	51.59036	47.1944	47.83168	47.24229	Kilgore College	Rural
credit1	22601900	152	48.01192	49.83506	47.62471	49.15587	47.22063	Kilgore College	Rural
credit1	22601900	35	48.16455	48.9919	47.10116	49.18037	46.61883	Kilgore College	Rural
credit1	22601900	61	47.40531	50.21717	47.79949	49.35499	47.53704	Kilgore College	Rural
credit2	22601900	23	50.98859	53.68721	56.13695	50.44277	54.77627	Kilgore College	Rural
credit2	22601900	152	53.58179	52.03993	55.49189	52.44692	55.38175	Kilgore College	Rural
credit2	22601900	35	52.95024	51.12958	54.09344	52.2918	54.63024	Kilgore College	Rural
credit2	22601900	61	52.9573	52.48401	56.23819	52.06112	55.67843	Kilgore College	Rural
enrlment1	22601900	23	43.43352	49.14123	45.33597	44.57047	44.47057	Kilgore College	Rural
enrlment1	22601900	152	46.08367	48.11386	46.46645	46.79712	45.92744	Kilgore College	Rural
enrlment1	22601900	35	46.23233	47.54211	45.67353	46.86892	45.28668	Kilgore College	Rural
enrlment1	22601900	61	45.17254	48.07523	46.14883	46.37596	45.58752	Kilgore College	Rural
enrlment2	22601900	23	52.94885	55.89897	55.42902	53.23768	55.41615	Kilgore College	Rural
enrlment2	22601900	152	55.77722	54.47507	56.04392	55.86485	56.10655	Kilgore College	Rural
enrlment2	22601900	35	55.3637	53.51877	55.44798	56.00811	55.52197	Kilgore College	Rural
enrlment2	22601900	61	55.13834	54.75055	56.71872	55.61867	56.70802	Kilgore College	Rural

BMARK

Size	igroup	Lookup
Medium	school	7 all 22601900school
Medium	school	7 credit1 22601900school
Medium	school	7 credit2 22601900school
Medium	school	7 enrment1 22601900school
Medium	school	7 enrment2 22601900school
Medium	7	7 all 226019007
Medium	Medium	7 all 22601900Medium
Medium	Rural	7 all 22601900Rural
Medium	7	7 credit1 226019007
Medium	All_School:	7 credit1 22601900All_Schools
Medium	Medium	7 credit1 22601900Medium
Medium	Rural	7 credit1 22601900Rural
Medium	7	7 credit2 226019007
Medium	All_School:	7 credit2 22601900All_Schools
Medium	Medium	7 credit2 22601900Medium
Medium	Rural	7 credit2 22601900Rural
Medium	7	7 enrment1 226019007
Medium	All_School:	7 enrment1 22601900All_Schools
Medium	Medium	7 enrment1 22601900Medium
Medium	Rural	7 enrment1 22601900Rural
Medium	7	7 enrment2 226019007
Medium	All_School:	7 enrment2 22601900All_Schools
Medium	Medium	7 enrment2 22601900Medium
Medium	Rural	7 enrment2 22601900Rural